



Land and Water Conservation Board Agenda

February 7, 2023

The Land and Water Conservation Board (LWCB) will meet on **February 7, 2023** The board will hold its official business meeting at 9:00 am via Microsoft Teams with the option to attend in person. To attend the meeting remotely, join by telephone at +1 608-571-2209 with Conference ID 876 158 633# or click the following Teams [hyperlink](#). The agenda for the meeting is shown below.

AGENDA ITEMS AND TENTATIVE SCHEDULE:

- 1 Call the Meeting to Order – **Mark Cupp, LWCB Chair**
 - a. Roll Call
 - b. Pledge of allegiance
 - c. Open meeting notice
 - d. Introductions, Acknowledgements
 - e. Approval of agenda
 - f. Approval of December 6, 2022 meeting minutes

- 2 Public appearances*

**Each speaker is limited to 5 minutes or less. Each speaker must complete a Public Appearance Request Card and submit it to a DATCP representative before the start of the meeting*

- 3 Election of 2023 Officers
LWCB Chair

- 4 Recommendation for approval of 5 Year LWRM Plan review for Dane County
Amy Piaget, Dane County Conservationist; Patrick Downing, Land Conservation Comm

- 5 Report and Potential Recommendation on the 2023 CREP Spending Authority
Brian Loeffelholz, DATCP

- 6 Statewide Phosphorus Multi-discharger Variance
Wade Strickland, DNR

- 7 LWCB Advisory Committee on Research - Committee Updates
Ron Grasshoff, LWCB; Zach Zopp, DATCP

*Mark Cupp, Chair; Bobbie Webster, Vice-Chair;
Monte Osterman, Secretary*

*Members: Andrew Buttlers; Ron Grasshoff; Rebecca Clarke; Bob Thome; Brian McGraw;
Andrew Potts; Brian Weigel; Jill Schoen*

- 8 Agency reports
 - a. FSA
 - b. NRCS
 - c. UW-CALS
 - d. UW Madison - Extension
 - e. WI Land + Water
 - f. DOA
 - g. DATCP
 - h. DNR
 - i. Member Updates

- 9 Planning for April 2023 LWCB Meeting -
Mark Cupp, LWCB

- 10 Adjourn

**MINUTES
LAND AND WATER CONSERVATION BOARD MEETING**

**December 6, 2022
Microsoft Teams Meeting**

Item #1 Call to Order—pledge of allegiance, open meeting notice, approval of agenda, approval of October 4, 2022 LWCB meeting minutes.

Call to Order

The Land and Water Conservation Board (Board) met in person at 2811 Agriculture Drive, Madison WI 53718 and via videoconference on **December 6, 2022**. The meeting was preceded by public notice as required by Wis. Stat. § 19.84. The meeting was called to order by Chairman Mark Cupp at **9:00 am** and the pledge of allegiance was conducted.

Members and Advisors Present

Members: Mark Cupp, Bobbie Webster, Monte Osterman, Brian McGraw, Andrew Buttles, Ron Grasshoff, Mike Hofberger, Bob Thome, Brian Weigel, Andrew Potts, and Jill Schoen. A quorum was present.

Advisors: Matt Krueger (WI Land + Water), Eric Allness (NRCS) and Ian Krauss (FSA).

Approval of Agenda

Motion

Weigel motioned to approve the agenda as presented, seconded by Buttles, and the motion carried unanimously.

Approval of Minutes

Motion

Potts motioned to approve the October 4, 2022 meeting minutes as presented, seconded by Webster, and the motion carried unanimously. The approved minutes shall be posted as the official meeting record for publication on the LWCB website.

Item #2 Public Appearances

No public appearance cards were submitted.

Item #3 Recommendation for approval of Land and Water Resource Management Plan Revision for Eau Claire County

Chad Berge, County Conservationist, Eau Claire County Land Conservation Division, and Heather DeLuka, Land Conservation Committee Member, made a formal presentation in support of a 10-year approval of the County's LWRM plan. A copy of their presentation is available on the LWCB's website lwcb.wi.gov.

DATCP's review of the plan, using the LWRM Plan Review Checklist, found that the plan complies with all requirements of section 92.10, Wisconsin Statutes, and Chapter ATCP 50, Wisconsin Administrative Code.

The County provided written answers to the Board's standardized questions, recent work plans and accomplishments, and other materials (available on LWCB's website: lwcb.wi.gov).

Motion

After a discussion between the Board and County representatives, McGraw motioned to recommend approval of Eau Claire County's LWRM plan revision for a period of 10 years, seconded by Buttles, and the motion carried unanimously.

Item #4 Recommendation for approval of Land and Water Resource Management Plan Revision for Richland County

Cathy Cooper, County Conservationist, Richland County Land Conservation Department, and Melissa Luck, Land+ Zoning Standing Committee Chair, made a formal presentation in support of a 10-year approval of the County's LWRM plan. A copy of their presentation is available on the LWCB's website lwcb.wi.gov.

DATCP's review of the plan, using the LWRM Plan Review Checklist, found that the plan complies with all requirements of section 92.10, Wisconsin Statutes, and Chapter ATCP 50, Wisconsin Administrative Code.

The County provided written answers to the Board's standardized questions, recent work plans and accomplishments, and other materials (available on LWCB's website: lwcb.wi.gov).

Motion

After a discussion between the Board and County representatives, Osterman motioned to recommend approval of Richland County's LWRM plan revision for a period of 10 years, seconded by McGraw, and the motion carried unanimously.

Item #5 Recommendation for approval of Land and Water Resource Management Plan Revision for Buffalo County

Cale Severson, Land Conservationist, Buffalo County Land Management, and Dwight Ruff, Land Conservation, Ag & Extension Committee Chair, made a formal presentation in support of a 10-year approval of the County's LWRM plan. A copy of their presentation is available on the LWCB's website lwcb.wi.gov.

DATCP's review of the plan, using the LWRM Plan Review Checklist, found that the plan complies with all requirements of section 92.10, Wisconsin Statutes, and Chapter ATCP 50, Wisconsin Administrative Code.

The County provided written answers to the Board's standardized questions, recent work plans and accomplishments, and other materials (available on LWCB's website: lwcb.wi.gov).

Motion

After a discussion between the Board and County representatives, Weigel motioned to recommend approval of Buffalo County’s LWRM plan revision for a period of 9 years, seconded by Grasshoff, and the motion carried unanimously.

Item #6 Review of LWCB Bylaws

Katy Smith, DATCP, presented a review of the LWCB’s Bylaws. The proposed bylaw revisions are available within the [December 6, 2022 meeting packet](#).

Motion

After a discussion between the Board and agency representatives, McGraw motioned to recommend approval the Bylaw revisions as presented, seconded by Grasshoff, and the motion carried unanimously.

Item #7 Lunch

The Board observed a lunch break.

Item #8 Introduction to Grassland 2.0

Randy Jackson, Campbell-Bascom Professor of Grassland Ecology, UW-Madison, gave an introductory presentation the Grassland 2.0 project.

Item #8 Recommendation for approval of 5-year Land and Water Resource Management Plan review for Outagamie County

Greg Baneck, County Conservationist, Sarah Kussow GIS Specialist/Watershed Planner, Outagamie County Land Conservation Department and Debbie VanderHeiden, Land Conservation Committee Chair, formally requested a recommendation of approval from the Board regarding the County’s 5-year LWRM plan review.

The County provided written answers to the Board’s standardized questions, recent work plans and accomplishments, and other materials (available on LWCB’s website: lwcb.wi.gov).

Motion

After a discussion between the Board and County representatives, Hofberger motioned to recommend approval of Outagamie County’s 5-year LWRM plan review, seconded by Webster, and the motion carried unanimously.

Item #9 LWCB Advisory Committee on Research - Committee Updates

Ron Grasshoff and Zach Zopp, DATCP, presented to the Board on the meeting of the LWCB’s Advisory Committee on Research. The cover memo submitted to the Board is available online at the LWCB website within the [December 6, 2022 meeting packet](#).

Item #10 Review of Annual Agenda

Katy Smith, DATCP, presented the 2023 LWCB Annual Agenda to the Board. The cover memo and proposed agenda is available online at the LWCB website within the December 6, 2022 meeting packet.

Motion

After a discussion between the Board and agency representatives, Schoen motioned to recommend approval the Annual Agenda as presented, seconded by Potts, and the motion carried unanimously.

Item #11 Agency Reports

FSA- Ian Krauss submitted a written report that is available online at the Land and Water Conservation Board website within the [December 6, 2022 meeting packet](#).

NRCS – Eric Allness submitted a written report that is available online at the Land and Water Conservation Board website within the [December 6, 2022 meeting packet](#). In addition to the written report, Allness reported: Angela Biggs is still on detail to National Headquarters; Jaime Keith of Mississippi has been detailed to Wisconsin as Acting State Conservationist; The Federal Government is operating on a continuous resolution; Producers should expect to receive requests to complete census of agriculture surveys electronically.

WI Land+Water- Matt Krueger submitted a written report to the meeting chat. Krueger reported that: WI Land + Water is working to promote its legislative priorities including core funding of county conservation staff and updates to the Farmland Preservation Program as proposed in 2021 SB 68; WI Land + Water is planning for its annual conference March 1- March 3; and WI Land + Water recently finished its [Conservation and Climate Change Webinar Series](#).

DOA – Andrew Potts reported that the board could expect an update on the governor’s budget at the February 2023 meeting.

DATCP – Brian Weigel submitted a written report that is available online at the Land and Water Conservation Board website within the [December 6, 2022 meeting packet](#).

DNR – Jill Schoen submitted a written report that is available online at the Land and Water Conservation Board website within the [December 6, 2022 meeting packet](#). In addition to the written report, Schoen reported that DNR Secretary Preston Cole resigned in November; Eric Evensen (Northeast Region) and Dale Gasser (Southwest Region) left positions as regional non-point coordinators.

Item #14 Planning for the February 2023 LWCB meeting

The Board should expect the following at the next LWCB meeting:

- 5-year Review Dane County
- Report and Potential Recommendation on the 2023 CREP Spending Authority
- Election of Officers
- LWCB Advisory Committee on Research Updates

Item #15 Adjourn

Motion

Weigel motioned to adjourn, seconded by Buttles, and the motion carried unanimously. The meeting was adjourned at 2:34 pm.

CORRESPONDENCE/MEMORANDUM _____ **State of Wisconsin**

DATE: January 20, 2023

TO: Land and Water Conservation Board Members and Advisors

FROM: Lisa K. Trumble, DATCP *Lisa K. Trumble*
Resource Management Section,
Bureau of Land and Water Resources

SUBJECT: Five Year Review of the *Dane County Land and Water Resource Management Plan*

Recommended Action: This is an action item. The LWCB should determine whether the county has met the LWCB's criteria for a five-year review of a LWRM plan approved for ten years. If the LWCB makes a formal determination that the county has failed to meet these criteria, DATCP will automatically modify its order to terminate approval of the county's plan effective December of this year.

Summary: The Dane County land and water resource management plan has been approved through December 31, 2028, contingent on a five-year review conducted prior to December 31, 2023. In advance of the five-year review, Dane County has completed a DATCP approved form designed to implement the LWCB's reference document dated October 27, 2021, and the criteria for conducting a five-year review. The county has provided written answers to four questions regarding past and future implementation, has provided the required work planning documents, and has appropriately involved the Land Conservation Committee.

Materials Provided:

- Completed Five Year Review Form
- 2022 Annual Workplan with Accomplishments
- 2022 Outreach Summaries
- 2023 Annual Workplan

Presenter: Amy Piaget, County Conservationist, Dane County Land & Water Resources Dept.
Patrick Downing, Land Conservation Committee Chair



Land and Water Conservation Board
County Land and Water Resource Management Plan
Five Year Review of LWRM Plans

County: DANE

Implementation Covering Past Five Years and Future Directions

Answer these four questions in writing (not to exceed 4 pages)

1. Provide a representative number of accomplishments that can be directly traced to activities identified in multiple work plans. For each accomplishment, explain how the planning process helped the county achieve its outcome, including planning adjustments that helped better target county activities.

Over the past five years, Dane County has implemented local, state, and federal cost-share funding programs working with a wide-variety of practices and landowners. The County Board and County Executive are very supportive of conservation work in the county and provide a significant amount of funds annually for implementation. In addition, Dane County was successful in obtaining two RCPP projects in the Yahara Watershed - one ending in 2020 and the second starting in 2022. The following is a summary of the number of contracts managed and amount of funds allocated for the past five years:

- 2018: 89 contracts allocating approximately \$530,747
- 2019: 186 contracts allocating approximately \$2,353,881
- 2020: 176 contracts allocating approximately \$2,713,981
- 2021: 176 contracts allocating approximately \$3,649,969
- 2022: 170 contracts allocating approximately \$2,817,069*

* 2022 numbers are draft as of the development of this report due to timing of report presentation versus reconciliation of 2022 projects.

The amount of work conducted as presented above over the past five years has shown a steady increase and provides a good example of the county's efforts in achieving annual workplans. Reporting on this volume of work is challenging since it takes a significant amount of time to reconcile that many contracts, the practices associated with the contracts, and funding.

Other accomplishments include the development of service agreements with a number of municipalities for the implementation of either adaptive management or water quality trading including: Dane-Iowa, Cross Plains, Yahara WINS, Mount Horeb, and Blue Mounds. This shows that the county is seen as a viable partner and has been successful in accomplishing projects as planned.

While there are a number of producer-led watershed groups in Dane County, we directly worked with and assisted in the formation of a new group called the Biological Farmer Friends of the Lower Yahara Watershed. While staff assist other producer-led groups in

the county upon request, this is the first group that has utilized significant county staff time to support the group with logistics, grant writing, practice implementation, and outreach events. This has been a good learning experience for the county with the role of collaborating entity.

2. Identify any areas where the county was unable to make desired progress in implementing activities identified in multiple work plans. For each area identified, explain the work plan adjustments that were made to refocus planned activities. If no areas are identified, explain how the county was able to make progress in all the areas planned.

One of the main areas where the county was unable to make desired progress was in the education and outreach category. This is primarily due to the COVID-19 pandemic. The primary program impacted by the pandemic was in-person nutrient management training classes for producers to write their own NMPs. We have paused taking the DATCP NM training funds until we can re-evaluate our program. At this time, we are primarily focusing on one-on-one trainings with producers and landowners for the development of NMPs. In addition, we reduced or eliminated field days and gatherings in general until the county lifted some of the restrictions associated with social distancing. In the coming years, we plan to re-evaluate our NM training programming looking to potentially partner with the UW-Madison short-course or similar programming to provide training programs.

3. Describe how the county's work plans implement its priority farm strategy and the effectiveness of county actions implementing agricultural performance standards and conservation practices on farms. In particular, the county should describe outreach, farm inventories, and additional funds that were pursued to implement its strategy.

The county's priority farm strategy is built into each annual work plan by responding to landowner requests for voluntary practice implementation, FPP status reviews, complaint responses, ordinance implementation, and practice inspections. Outreach is primarily through letters, phone calls, and one-on-one meetings on-farms. Funding for implementation is primarily provided by the county. Program funding includes: \$2.5 million annually to implement our Continuous Cover Program; \$750,000 annually to implement the Yahara CLEAN initiative; \$750,000 annually to implement water quality and erosion control practices outside of the Yahara Watershed; \$500,000 initial allocation for implementation of the county's Chapter 49 Agricultural Performance Standards and Manure Management ordinance; along with several other programs including Legacy Sediment Removal, Yahara River Flood Mitigation dredging, Urban Water Quality Grants, and a variety of restoration projects (i.e. prairie restoration, cropland conversions to perennial cover, wetland restoration, streambank stabilization/restoration) on county-owned properties. RCPP funds were successfully sought in order to implement soil health practices such as cover crops since operating/SEG funds are limited at the county level.

4. Provide representative examples that show changes in direction for work planning in the upcoming five years, with specific examples provided showing adjustments in planned activities in the county's most recent work plan.

There are a few areas that are shifting workload priorities looking forward to the next five years of implementation. One area incorporates environmental benefits that we are terming "Ecosystem Services" into more of our daily operations. As part of our ecosystems services programming, we are exploring carbon sequestration, nutrient reductions, infiltration benefits, and soil health improvements. Programming is being established to include data collection and analysis as well as modeling and quantification of environmental benefits. One example of this involves the county's Continuous Cover Program where, with landowner permissions, we will collect samples using protocols established by the UW to evaluate a baseline condition and the changes over time in nutrients, carbon, and infiltration on lands that have been converted from traditional row crops to continuous vegetation. The biggest challenge with creating this new program is incorporating it into our existing workflows. Over the next five years, we will be continuing to learn and build this program into our daily work.

The second item that is shifting workload priorities is a \$1 million, 5-year grant the county received from NRCS to establish a demonstration farm network in Dane County. This will be the first NRCS sponsored demo farm network in Wisconsin in the Mississippi River Basin (since the other networks are primarily located in the Great Lakes Basin). A lot of work is expected as part of this grant from hiring a project manager, to establishing the demonstration farms, to developing the research components, to conducting education and outreach. To be successful, this will be a priority in the coming years.

The third item that will be shifting workload priorities is the start of a feasibility study to develop a community treatment facility for manure in Dane County. Funds were approved for the 2023 county budget to conduct a request for proposals for the feasibility study and to begin exploring options. The Land & Water Resources Department is the lead for this project and it will consume staff time with planning meetings, outreach, and farmer interactions to gain insight into what may be feasible long term for manure management in the county.

An emerging topic that may take resources deals with PFAS. It is unclear at this time what roll Land & Water Resources Department will have but it is a topic of concern within the community.

Annual Work Plans

Attach both of the following:


- a. The most current annual work prepared by the county.
- b. The work plan for the previous year that includes a column that identifies the progress in implementing the planned activities for that year.

Board Review Process

The goal of the review is not to fail counties. The board recognizes the dynamic nature of the planning process. Board members are interested in how counties tackle priorities over time and how they respond to changing conditions in pursuing their priorities. The board will evaluate a county's planning and implementation based on how well the county balances and prioritizes the following: agricultural performance standards, other state priorities (impaired waters, FPP checks), and local priorities. When needed, the Board will provide constructive support to counties to improve the quality of their planning. Counties have the option to prepare a brief presentation to illustrate their successes and future priorities.

Land Conservation Committee Notification

The LCC was provided a completed copy of these questions (including attachments) on: January 20, 2023 as part of the LCC agenda packet for the January 26, 2023 meeting where the information will be presented.

Signature of Authorized Representative:  **Date:** 1/9/23
(e.g. County Conservationist, LCC chair)

Send completed questionnaire and attachments to:

Lisa.Trumble@wi.gov

**DANE COUNTY 2022 ANNUAL WORK PLAN
LOCALLY-IDENTIFIED PRIORITIES**

Table 1: Planned activities and performance measures by category

CATEGORY (goal and objective from LWRM plan can be added in each category)	PLANNED ACTIVITIES WITH BENCHMARKS If applicable identify focus areas, e.g. HUC 12 watershed code	PERFORMANCE MEASUREMENTS [^]
<ul style="list-style-type: none"> <i>Cropland</i> 		
<p>Cropland, soil health and/or nutrient management</p> <p>LWRMP Goals/Objectives</p> <ul style="list-style-type: none"> I. A. Reduce the quantity of sediment and nutrients reaching surface water and groundwater. I. B. Improve soil health to reduce soil erosion, improve infiltration and reduce nutrient losses. I. G. Build awareness regarding economic and environmental value of developing and implementing a nutrient management plan. 	<p>Cropland Practices</p> <ul style="list-style-type: none"> Cover Crops: estimated 3,000 acres Diversions: 2 projects Grade Stabilization/WASCOB Structures: 2 projects Grassed/Lined Waterways: 10 projects Conservation Equipment: 2 projects <p>Nutrient Management</p> <ul style="list-style-type: none"> Develop new NMPs covering approximately 2,300 acres cost-shared with DATCP funds Evaluate nutrient management farmer education programming due to COVID-19. Conduct new and/or refresh her course pending future guidance on meetings. Review approximately 50 submitted NMPs Implement winter spreading permit requirements under Chapter 49 <p>Landscape Assessments/Projects</p> <ul style="list-style-type: none"> Conduct spring crop and tillage survey (approximately 430 sites) Continue mapping acres covered by NMPs Continue implementation of Dane County's Continuous Cover Program converting approximately 700 traditional row crop acres to cool season grasses, prairie/wildlife/pollinator habitat, or grazing forage 	<p>Type and units of practice(s) installed Amount of cost-share dollars spent # lbs of P reduced (calculated for targeted watersheds only)</p> <p>3,964.9 acres of cover crops 2 diversions 3 grade stabilization structures 18 grassed waterways 18 soil health equipment projects 1 terrace 1,775.9 acres of nutrient management cost-shared with DATCP SEG funds</p> <p>No NM workshops in 2022 due to pandemic and re-evaluating our NM programming.</p> <p>Completed reviews on at least 100 NMPs for winter spreading permits, FPP status reviews, and cost-share funding</p> <p>See permit numbers and inspections for winter spreading below.</p> <p>Conducted spring crop and tillage survey in May/June 2022</p> <p>Conducted first ever fall crop and tillage survey in November 2022.</p> <p>Contracted over 400 acres in the county's Continuous Cover Program totaling approximately \$1,058,000</p> <p>Over 80,000 acres of NM mapped.</p>
<ul style="list-style-type: none"> <i>Livestock</i> 		
<p>Livestock</p> <p>LWRMP Goals/Objectives</p>	<p>Livestock Practices</p> <ul style="list-style-type: none"> Roof Runoff Systems: 3 projects Underground Outlets: 1 project Stream Crossings: 3 projects 	<p>Type and units of practice(s) installed Amount of cost-share dollars spent # lbs of P reduced (calculated for targeted watersheds only)</p>

**DANE COUNTY 2022 ANNUAL WORK PLAN
LOCALLY-IDENTIFIED PRIORITIES**

<ul style="list-style-type: none"> I. A. Reduce the quantity of sediment and nutrients reaching surface water and groundwater. I. B. Improve soil health to reduce soil erosion, improve infiltration and reduce nutrient losses. I. G. Build awareness regarding economic and environmental value of developing and implementing a nutrient management plan. 	<ul style="list-style-type: none"> Manure Storage Closure: 5 projects Livestock Pipeline: 2 projects Lot Abandonment/Relocation: 1 projects Prescribed Grazing: 2 projects <p>Landscape Assessments</p> <ul style="list-style-type: none"> Continue mapping locations of installed, cost-shared practices Continue mapping the location of manure storage facilities Develop winter spreading plans in accordance with Chapter 49 Implement certificate of use requirements under Chapter 49 for manure storage facilities Implement manure storage permits under Chapter 49 for new, modified or abandonment of manure storage facilities 	<p>13 roof runoff structures 2 underground outlets 5 watering facilities 1 subsurface drain 2 access roads 9 prescribed grazing 6 livestock pipelines 3 obstruction removals 13 fencing projects 3 waste storage closures 1 waste storage facility</p> <p>Certificate of Use and Manure Storage permitting reported below</p>
--	---	---

• *Water quality*

<p>Water quality/quantity</p> <p>LWRMP Goals/Objectives</p> <ul style="list-style-type: none"> I. A. Reduce the quantity of sediment and nutrients reaching surface water and groundwater. III. A. Encourage new methods of water quality improvement. IV. A. Protect, restore and stabilize streambanks and shorelines. 	<p>Water Quality</p> <ul style="list-style-type: none"> Streambank Protection: 2 projects Harvestable Buffers: 2 projects Continue implementation of Dane County's sediment removal project (aka "Suck the Muck"), estimated 2 miles of stream <p>Water Quantity</p> <ul style="list-style-type: none"> Evaluate opportunities for flood mitigation and increase infiltration from agricultural landscapes. 	<p>Type and units of practice(s) installed Amount of cost-share dollars spent # lbs of P reduced (calculated for targeted watersheds only)</p> <p>0.5 miles of stream sediments removed from Six Mile Creek 1 well decommissioning</p> <p>Developed a county watersheds map located here: https://lwrp.dane.gov/what-we-do/watershed-management/yahara-watershed-map</p>
--	---	---

<p>Forestry</p>	<p><i>Practice installation</i></p> <p>1 Forest stand improvement (28.9 acres)</p>	<p><i>Type and units of practice(s) installed Amount of cost-share dollars spent # lbs of sediment reduced (using any approved method) # lbs of P reduced (using any approved method)</i></p>
------------------------	--	---

• *Invasive*

<p>Invasive species</p> <p>LWRMP Goals/Objectives</p> <ul style="list-style-type: none"> IV. E. Develop/expand invasive species programs aimed at 	<p>Surveys</p> <ul style="list-style-type: none"> Point-intercept surveys <p>Management plans</p> <ul style="list-style-type: none"> Update county's AIS plan as needed 	<p># surveys completed # lbs. of carp removed # hours logged at boat landings</p>
---	---	---

**DANE COUNTY 2022 ANNUAL WORK PLAN
LOCALLY-IDENTIFIED PRIORITIES**

<p>preventing introduction of new species and reducing existing species.</p> <ul style="list-style-type: none"> V. D. Educate and inform the public about the threats posed by aquatic and terrestrial invasive and exotic species. 	<ul style="list-style-type: none"> Update AIS signage throughout the county <p>Control</p> <ul style="list-style-type: none"> Continue eradication program for Yellow Floating Heart in a small pond in Northern Dane County Continue Wetland Invasive Plan (WIP) pilot project to encourage citizen participation in the Purple Loosestrife Biocontrol Program Continue Clean Boats Clean Waters programming at public boat landings Continue carp management programs on Fish, Mud, Crystal and Indian Lakes Continue aquatic plant management harvesting program according to the management plan, harvesting maps and DNR permits 	<p>Inventoried all AIS signage</p> <p>100 hours at Babcock for CBCW 100 hours at Fish Camp for CBCW</p> <p>6,000 pounds of carp removed from Indian Lake</p> <p>Eradication of yellow floating heart appears to be successful</p>
--	---	---

• *Wildlife*

<p>Wildlife-We tlands-Habitat</p> <p>LWRMP Goals/Objectives</p> <ul style="list-style-type: none"> II. A. Reduce the rate of urban expansion by preserving priority farmlands and open space. IV. A. Protect, restore and stabilize streambanks and shorelines. IV. C. Restore wetland and upland habitat. IV. D. Minimize conversion of wetlands to agricultural and urban development. V. A. Make grants available to local units of government and non-profits to protect and enhance land and water resources. 	<p>Wetlands</p> <ul style="list-style-type: none"> Wetland Restoration: 2 projects <p>Wildlife programs</p> <ul style="list-style-type: none"> Continue to participate in APHIS programs Continue to participate in deer and turkey donation programs <p>Plant sales</p> <ul style="list-style-type: none"> Continue to manage and participate in the Plant Dane Program offering native plants at discounted prices and plant donations to organizations <p>Habitat programs</p> <ul style="list-style-type: none"> Continue to implement Dane County Conservation Cover Program Continue to implement conservation and agricultural preservation easement programming Continue to implement streambank easement program 	<p># acres of wetland restored # plants sold/donated # acres in Conservation Cover Program # acres protected by conservation and agricultural preservation easements # miles of streams protected with easements # CRP contracts assisted</p> <p>17 conservation cover 7 forage and biomass plantings</p> <p>28,060 native plants sold 3,312 native plants donated to school/community projects</p> <p>21 Continuous Cover Program contracts</p> <p>Conducted streambank easement monitoring for 44 landowners covering 24 miles of stream and 175 acres</p> <p>Re-evaluating the county's streambank easement program - new program guidelines have not been completed yet.</p>
--	--	--

**DANE COUNTY 2022 ANNUAL WORK PLAN
LOCALLY-IDENTIFIED PRIORITIES**

	<ul style="list-style-type: none"> Continue to assist with implementing CRP and CREP under a contribution agreement with NRCS 	
<ul style="list-style-type: none"> <i>Urban</i> 		
<p>Urban issues</p> <p>LWRMP Goals/Objectives</p> <ul style="list-style-type: none"> I. D. Improve and enhance erosion control and stormwater management runoff to reduce the quantity of runoff and improve the quality of runoff. V. A. Make grants available to local units of government and non-profits to protect and enhance land and water resources. V. H. Work with agencies, consultants, contractors and developers to ensure erosion control and stormwater management requirements are met. 	<p>Stormwater control</p> <ul style="list-style-type: none"> Review and issue stormwater management plans and permits Conduct stormwater management compliance inspections and enforcement <p>Erosion control</p> <ul style="list-style-type: none"> Review and issue erosion control and shoreland erosion control plans and permits Conduct erosion control and shoreland erosion control compliance inspections and enforcement <p>Grants</p> <ul style="list-style-type: none"> Continue to implement the Urban Water Quality Grant Program 	<p># inspections # plans reviews # permits issued # compliance issues resolved # of grants issued and dollars awarded</p> <p>2 UWQGs issued totaling \$199,500</p>
<ul style="list-style-type: none"> <i>Watershed</i> 		
<p>Watershed strategies</p> <p>LWRMP Goals/Objectives</p> <ul style="list-style-type: none"> I. A. Reduce the quantity of sediment and nutrients reaching surface waters and groundwater. I. B. Improve soil health to reduce soil erosion, improve infiltration and reduce nutrient loses. III. A. Encourage new methods of water quality improvement. IV. A. Protect, restore and stabilize streambanks and shorelines. V. C. Support individuals along with watershed groups and organizations in their education of citizens about resource improvement; pollution prevention. 	<p>Phosphorus Compliance Programs</p> <ul style="list-style-type: none"> - Active Service Agreement(s) <ul style="list-style-type: none"> Yahara WINS Adaptive Management Dane-Iowa Adaptive Management Cross Plains Water Quality Trading - Projects under Discussion/Service Agreement(s) being Developed <ul style="list-style-type: none"> Lodi Adaptive Management Deerfield Adaptive Management Cambridge Adaptive Management Blue Mounds Adaptive Management New Glarus Water Quality Trading Brooklyn Belleville Mt. Horeb <p>Farmer-Led Watershed Groups</p>	<p># meetings attended/presentations given</p> <p>Quarterly meetings with Yahara WINS</p> <p>Service agreement discussions with Mount Horeb</p>

**DANE COUNTY 2022 ANNUAL WORK PLAN
LOCALLY-IDENTIFIED PRIORITIES**

<ul style="list-style-type: none"> • V. F. Promote partnerships to leverage funding and resources for conservation practices in order to target funding or resource gaps in the county. 	<ul style="list-style-type: none"> • Provide assistance as requested to Yahara Pride Farms and Farmers for the Upper Sugar River • Provide collaborating entity support to Biological Farming Friends (BFFs) producer led organization <p>Local Watershed Strategies</p> <ul style="list-style-type: none"> • Implementation of the Dane County RCPP project in the Yahara and Sugar River Watersheds • Implementation of the Door Creek Watershed Implementation Plan • Assist watershed groups with the development of watershed strategies and planning 	<p>Continued to support BFF organization assisting with outreach activities, field days, demonstrations, workshop attendance, logo'd gear.</p> <p>Technical Workgroup to assess flooding at Fish, Mud, Crystal Lakes - final report at https://lwr.d.countyofdane.com/documents/pdfs/Plans--Studies--Reports/Reports/Fish-Lake-Workgroup-Final-Report-6-17-22.pdf</p> <p>Participated in the development of the Black Earth Creek Green Infrastructure Plan - more info at https://becw-gi-carpc.hub.arcgis.com/</p>
<p>Other</p>	<p><i>PL 566 Non-metallic and frac sand mining</i></p>	<p><i>Number of plans reviewed Number of inspections</i></p>

Table 2: Planned activity related to permits and ordinances

Permits and Ordinances	Plans/application reviews anticipated		Permits anticipated to be issued	
Feedlot permits	n/a		n/a	
Manure storage construction and transfer systems	8	6	8	6
Manure storage closure	5	5	5	5
Livestock facility siting	n/a		n/a	
Nonmetallic/frac sand mining	n/a		n/a	
Stormwater and construction site erosion control	300	*	300	*
Shoreland zoning	n/a		n/a	
Wetlands and waterways (Ch. 30)	n/a		n/a	
Other				
Winter Spreading Permits (Ch. 49 DC Ordinance)	50	40	50	18
Certificate of Use (Ch. 49 DC Ordinance)	50	92	50	91

DANE COUNTY 2022 ANNUAL WORK PLAN LOCALLY-IDENTIFIED PRIORITIES

Table 3: Planned inspections

Inspections	Number of inspections planned	
Total Farm Inspections	320	
For FPP	300	~193
For NR 151	20	covered by ordinance inspections
Animal waste ordinance	30	18*
Livestock facility siting	n/a	
Stormwater and construction site erosion control	300	*
Nonmetallic mining	n/a	

Table 4: Planned outreach and education activities

Activity	Number
Tours	1
Field days	3
Trainings/workshops	2
School-age programs (camps, field days, classroom)	1
Newsletters	12
Social media posts	50
News release/story	5

See attached quarterly outreach reports for January through September. At the time of this reporting, the October-December report was still being developed.

Table 5: Staff Hours and Expected Costs (staff can be combined or listed individually)

Staff/Support	Estimated Hours	Estimated Costs (Salary + Fringe)	
County Conservationist (x1)	2,080	\$146,438	
Engineer (x1)	2,080	\$142,061	
Conservation Specialist – Advanced (x2)	4,160	\$242,054	
Conservation Specialist II (x6)	12,480	\$562,519	
Conservation Outreach Specialist LTE (x1)	1,200	\$43,219	
Conservation Technician (x1)	2,080	\$91,189	
Data Analyst (x1)	2,080	\$111,628	
Cost Sharing (can be combined)			
Bond (State)	n/a	\$54,000	\$54,000
Bond (County)	n/a	\$3,000,000	~\$2.1 million
SEG (State)	n/a	\$95,000	~\$118,100
EQIP (Federal)	n/a	\$500,000	~\$642,000
Other (Grants)	n/a	\$100,000	

* Stormwater and erosion control numbers were not available at the time of developing this report.

^ Practices installed, inspections, and dollars of funding are preliminary numbers as data is still being compiled

**DANE COUNTY 2022 ANNUAL WORK PLAN
LOCALLY-IDENTIFIED PRIORITIES**

Table 6: HUC12s with Targeted Watershed Projects

HUC12	Name	Project Name
070700050501	Upper Black Earth Creek	Cross Plains-Water Quality Trading
070700050502	Middle Black Earth Creek	Cross Plains-Water Quality Trading
070700050503	Halfway Prairie Creek	Dane Iowa-Adaptive Management
070700050504	Lower Black Earth Creek	Dane Iowa-Adaptive Management
070700050502	Middle Black Earth Creek	Dane Iowa-Adaptive Management
070700050501	Upper Black Earth Creek	Dane Iowa-Adaptive Management
070700050204	Spring Creek	Lodi-Adaptive Management
070900020502	100 Mile Grove Cemetery	Yahara WINS-Adaptive Management/RCPP
070900020803	Badfish Creek	Yahara WINS-Adaptive Management/RCPP
070900020504	Cherokee Lake-Yahara River	Yahara WINS-Adaptive Management/RCPP
070900020903	City of Stoughton-Yahara River	Yahara WINS-Adaptive Management/RCPP
070900020901	Door Creek	Yahara WINS-Adaptive Management/RCPP/Impaired Waters
070900020501	Goose Lake-Yahara River	Yahara WINS-Adaptive Management/RCPP
070900020902	Lake Kegonsa-Yahara River	Yahara WINS-Adaptive Management/RCPP
070900020604	Lake Mendota-Yahara River	Yahara WINS-Adaptive Management/RCPP
070900020702	Lake Monona-Yahara River	Yahara WINS-Adaptive Management/RCPP
070900020703	Lake Waubesa-Yahara River	Yahara WINS-Adaptive Management/RCPP
070900020801	Oregon Branch	Yahara WINS-Adaptive Management/RCPP
070900020603	Pheasant Branch	Yahara WINS-Adaptive Management/RCPP
070900020802	Rutland Creek-Badfish Creek	Yahara WINS-Adaptive Management/RCPP
070900020602	Sixmile Creek	Yahara WINS-Adaptive Management/RCPP
070900020701	Starkweather Creek	Yahara WINS-Adaptive Management/RCPP
070900020904	Stoughton Airfield-Yahara River	Yahara WINS-Adaptive Management/RCPP
070900020503	Token Creek	Yahara WINS-Adaptive Management/RCPP
070900020601	Waunakee Marsh-Sixmile Creek	Yahara WINS-Adaptive Management/RCPP
070900020905	Yahara River	Yahara WINS-Adaptive Management/RCPP
70900040101	Mt. Vernon Creek	RCPP
70900040102	Primrose Branch-West Branch Sugar River	RCPP
70900040103	West Branch Sugar River	RCPP
70900040201	Badger Mill Creek	RCPP
70900040202	Headwaters Sugar River	RCPP
70900040203	Paoli-Sugar River	RCPP
70900040301	City of Evansville-Allen Creek	RCPP
70900040402	Ward Creek-Little Sugar River	RCPP

**DANE COUNTY 2022 ANNUAL WORK PLAN
LOCALLY-IDENTIFIED PRIORITIES**

HUC12	Name	Project Name
70900040501	Story Creek	RCPP
70900040502	Ross Crossing-Sugar River	RCPP

January – March 2022 Outreach Summary

This document provides a summary of outreach events and activities led by Land & Water Resources Department staff. In addition to these events, we support park friends group's and other conservation group's events that are not reflected in this summary.

Recurring Programs and General Announcements:

- **Plant Dane** - 28060 plants sold. 3312 plants donated to school and community projects
- The Wisconsin Natural Resources Board approved a donation of a bike trail in Lake Kegonsa State Park from Dane County at their April 13th meeting.
- **Conservation Awareness Poster Contest** "Healthy Soil: Healthy Life" 27 entries from students from kindergarten through 12th grade.

Presentations

- January 24 – "Plant Dane/Adopt A Storm Drain" presentation at the Sustainable Stoughton Meeting (Christal Campbell)
- Feb 10 - "Recent Progress in Watershed Management in Dane County, Wisconsin" presentation to the UW-Madison Watershed Management class (Matt Diebel)
- Feb 16 – "Managing Manure" presentation at the BFF Manure Management meeting (Amy Piaget)
- Feb 23 – "Fitting Cover Crops into your Rotation" presentation to farmers at the Wisconsin Cover Crop Conference (Marie Raboin)
- Feb 24 – "You, Me, & the USLE" virtual webinar (All Water Resource Engineering division staff)
- March 4 - "Outside the Box: Creative Ways to Leverage Partnerships, Funding and Resources to Further Conservation Efforts" presentation at the WI Land and Water Conference (Kyle Minks)
- March 8 - "Native Plants for Wildlife and Water Quality" presentation to the VA Farms & Gardens Virtual Garden Club (Theresa Nelson)
- March 10 – "Legacy Sediment" presentation at the WDNR TMDL Coordination Meeting (John Reimer/Kyle Minks)
- March 10 – "Recreational Opportunities" Dane County Public Informational Meeting on Waste & Renewables Sustainability Campus (Joleen Stinson / Chris James)
- March 10 – "Conservation Programs and Cover Crops" presentation to farmers in Paoli University (Marie Raboin)
- March 11 – "How to get started: Building a simple web application with R Shiny" presentation at the American Water Resources Association - Wisconsin Chapter Annual Meeting (Matt Diebel)

- March 22 - Storm Drain Mural Presentation to Randall Elementary School (Christal Campbell)
- March 24 - Storm Drain Mural Presentation to Spring Harbor Middle School (Christal Campbell)

Volunteer Training Series

- Jan 11 - Successful Event Planning, Social Media and Communications (Joleen Stinson/Lael Pascual/ Susan Sandford)
- Jan 25 – Friends Group Organization and Incorporation (guest speaker)
- Feb 8 - Grant Writing Workshop (guest speaker)
- Feb 19 - Volunteer Recruitment, Management, & Projects (Claire Lamberg/ Lars Higdon)
- Feb 22 – Membership and Fundraising (guest speaker)
- March 1 - Diversity, Equity and Inclusion Workshop (Lael Pascual, Claire Lamberg, Susan Sandford, Jess Starks)
- March 5 - Pesticide Applicator Training/Review Session with Certification Exam (Adam Alves)
- March 8 - Interpretive Signage and Design (guest speaker)

Youth and Family

- Jan 8 – Youth Volunteers for Conservation - Woodland conservation @ Capital Springs Recreation Area (Micah Kloppenburg)
- Jan 12 - Pop-ups in the Park Owl Walk @ Capital Springs Recreation Area (Amy Cox)
- Jan 18 - Girl's Inc. Adventure Club @ Goodman Community Center (Amy Cox)
- Jan 22 - Winter Fun Outdoor Gear Demo and Fun Day with the Sierra Club at WG Lunney Lake Farm County Park (Lael Pascual/Micah Kloppenburg)
- Jan 31 - Get Outside! @ Cherokee Marsh Natural Area with the Kennedy-Heights Community Center (Amy Cox)
- Feb 1 - Girl's Inc. Adventure Club @ Picnic Point with Goodman Community Center and East High School (Amy Cox)
- Feb 11 - Lil' Explorers @ the Lussier Family Heritage Center (Amy Cox)
- Feb 11 - Pop-ups in the Park Snowshoe @ Badger Prairie County Park (Micah Kloppenburg)
- Feb 12 – Youth Volunteers for Conservation - Woodland conservation @ Stewart Lake County Park (Micah Kloppenburg)
- Feb 19 - Youth Volunteers for Conservation - Backyard Bird Count @ WG Lunney Lake Farm County Park (Micah Kloppenburg)
- Feb 23 - Pop-ups in the Park Owl Walk @ Lewis Nine-Springs E-way (Amy Cox)
- March 1 - Girl's Inc. Adventure Club @ Capital Springs Recreation Area with Goodman Community Center and East High School (Amy Cox)
- March 4 – Tree Identification @ WG Lunney Lake Farm County Park with New Century School (Amy Cox)
- March 4 – Volunteer Brush Removal @ Gilman Mounds with Shabazz High School (Micah Kloppenburg)
- March 7 – Get Outside! @ Lussier Family Heritage Center with Kennedy-Heights Community Center (Amy Cox)

- March 12 - Youth Volunteers for Conservation – Prairie Seeding @ Donald County Park (Micah Kloppenburg)
- March 15 - Girl's Inc. Adventure Club @ REI with Goodman Community Center and East High School (Amy Cox)
- March 18 - Girl's Inc. Adventure Club Birding @ W.G. Lunney Lake Farm County Park (Amy Cox/Lael Pascual)
- March 23 – Tree Exploration with Bayview Community Center (Amy Cox)

Workshops and Training

- January 24 - Wildfire/Prescribed Burn Training for volunteers (Shane Otto/Lars Higdon/Claire Lamberg)
- Feb 21 - Winter Trail Maintenance training at the Wisconsin Park and Recreation Association's Annual Conference (Joleen Stinson / Bert Schwab / Eric Eisle)
- March 8 – Native Landscaping: A Solution to Pollution Webinar (Christal Campbell/Theresa Nelson)

Volunteer Events

This includes events hosted or supported heavily by staff but is not a complete list of events hosted by parks friends groups or other conservation groups in the county.

Native Seeds:

- January – Three days of prairie seed mixing, weighing and bagging with volunteers @ Libby Rd. Facility (Lars Higdon/Tom Klein/ Jaedan Festge/ Claire Lamberg)
- Feb/March –prairie planting events at CamRock County Park; Walking Iron County Park, and Pheasant Branch Conservancy (Lars Higdon/Shane Otto/Claire Lamberg/Tom Klein)

Prescribed Burns:

- March 28 – Capital Springs Disc Golf Course (Lars Higdon/Shane Otto)

Workdays

- Jan-March – 14 tree and brush removal workdays at various park properties (Lars Higdon/ Shane Otto/ Tom Klein/Jaedan Festge/ Claire Lamberg/ Vince Schmitz)
- Jan-March –three Walking Iron County Park workdays (Lars Higdon/ Shane Otto/ Tom Klein/Jaedan Festge/ Claire Lamberg/ Vince Schmitz)

April – June 2022 Outreach Summary

This document provides a summary of outreach events and activities led by Land & Water Resources Department staff. In addition to these events, we support park friends group's and other conservation group's events that are not reflected in this summary.

Presentations

- April-22 - “Stormwater Pollutions and Solutions” Storm Drain Mural Presentation at Cottage Grove Elem School Cottage Grove (Christal Campbell)
- April-22 - “Dane County Land & Water Resources Department” presentation to Zoology 677: Internships in Ecology at UW Madison (Amy Piaget)
- April-22 - Volunteer Opportunities within the DCP System” presentation to Master Naturalists (Claire Lamberg)
- April-22 – “Recent Progress in Watershed Management in Dane County, Wisconsin” Nelson Institute Earth Day Panel (Matt Diebel)
- April-22 - Tajikistan Adventure Tourism in the United States Panel Discussion with Destination Madison (Joleen Stinson)
- April-22 - Sugar River Streambank Restoration Meeting (Katie Nicholas)
- April – 22 – “Stormwater Pollutions and Solutions” Jefferson Middle School Madison (Christal Campbell)

Youth and Family

- April-22 - Get Outside! Biking with Kennedy-Heights Community Center (Amy Cox)
- April-22 - Get Outside! with Bayview Community Center (Amy Cox)
- April-22 - Girl's Inc. Outdoor Adventure Club with East High School (Amy Cox)
- April-22 - Girl's Inc. Summer Reunion with East High School (Amy Cox) A
- April-22 - Household Hazardous Waste Disposal Event (Christal Campbell/Dane County Waste and Renewables)
- April-22 - Girl's Inc. Outdoor Adventure Club with East High School (Amy Cox)
- May-22 - Get Outside! with Kennedy-Heights Community Center (Amy Cox)
- May-22 - Get Outside! with Bayview Community Center (Amy Cox)
- May-22 - Get Outside! Campfire skills with Bayview Community Center (Amy Cox)
- May 21-22 - Get Outside! IAT Backpacking Trip with East High School and Goodman Community Center (Amy Cox)
- May-22 - Get Outside! Biking Adventure with Kennedy-Heights Community Center (Amy Cox)

- May-22 - Get Outside! Fishing Adventure with Bayview Community Center (Amy Cox)
- May-22 - Lincoln School Field Trip (Matt Diebel)
- June-22 - Lil' Explorers Outdoor Adventure (Amy Cox)
- June-22 - Lil' Explorers StoryTime (Amy Cox)
- June-22 - Dane County Breakfast on the Farm - Rainfall Simulators (Landon Baumgartner)
- June-22 - Lil' Explorers Spanish StoryTime (Amy Cox)
- June-22 - Lil' Explorers StoryTime (Calliana Wickus)
- June-22 - Paddle in the Parks (Lael Pascual)
- June-22 - Get Outside! Canoeing with HoChunk Nation Youth (Amy Cox)
- June-22 - Learn-to Fish (Megan Sullivan, Emily Reed, and John Anderson)
- June-22 - Lil' Explorers Spanish StoryTime (Emily Reed and Calliana Wickus)
- June-22 - Get Outside! Biking Adventure with Goodman Girl's Inc. Elementary (Amy Cox and Calliana Wickus)
- June-22 - Get Outside! Fishing Adventure with Goodman Girl's Inc. Elementary (Megan Sullivan and Calliana Wickus)

Workshops and Training

- May-22 - Riversmith Fly Casting Clinic & Trout Days (Curt Diehl)
- May-22 - Certified Land Steward Orientation (Lars Higdon/Claire Lamberg)
- May-22 - Weeds & Wildflowers at Lake View Hill County Park (Lars Higdon)
- May-22 - UW Arboretum Empower U! Workshop (Christal Campbell)
- June-22 - Weeds & Wildflowers at Indian Lake County Park (Lars Higdon)

Volunteer Events

This includes events hosted or supported heavily by staff but is not a complete list of events hosted by parks friends groups or other conservation groups in the county.

- Six Summer Volunteer Restoration Workdays at various parks (Lars Higdon/ Shane Otto/ Claire Lamberg)
- Seventeen Prescribed Burns at various parks (Lars Higdon/Shane Otto)

July-Sept 2022 Outreach Summary

This document provides a summary of outreach events and activities led by Land & Water Resources Department staff. In addition to these events, we support park friends group's and other conservation group's events that are not reflected in this summary.

Presentations

- Aug 9 – “Introduction to Stormwater: Impacts and Solutions” Virtual and in person to the Stoughton Rotary Club Meeting (Claudia Guy)
- Sept 7 – Multiple presentations for the Wisconsin Park and Recreation Association Region Meeting, including the Solar improvements, the Lower Yahara River Trail, and the seed collection program (Joleen Stinson/Shane Otto/ Chris James/Lars Higdon/Claire Lamberg)
- Sept 10 – “Summary of Restoration work on County Lands, including Brigham Park.” at the Blue Mounds Area Project Annual Picnic (Lars Higdon)
- Sept 14 – “Bike Dane Update” annual presentation for local units of government and the public to discuss status of regional bike trail projects that are currently being planned or developed (Chris James)
- Sept 15 – “Stormwater Pollution and Solutions” at the Mariposa Learning Center (Christal Campbell)
- Sept 21 – “Overview of Dane County Parks” at the Anderson Park Friends Annual Meeting (Joleen Stinson)
- Sept 27 – “Dane County Parks: Ecological Restoration & Volunteers” at Sun Prairie High School (Claire Lamberg & Shane Otto)
- Sept 29 – “Overview of Current Regional Trail Projects Led by Dane County” presentation with Joe Parisi at the Healthy Communities Summit. Included information about other initiatives to promote healthy and outdoor lifestyles for County residents (Chris James)
- Sept 30 – “Outdoor Recreation Wellness Benefits” at the Wisconsin Healthy Communities Summit (Joleen Stinson)
- Oct 5 – “Dane County Parks: Ecological Restoration & Volunteers” Virtual for the American Family Lunch and Learn (Claire Lamberg)
- Oct 17 - Natural Areas Program Overview and Volunteer Opportunities at the Green Tree Garden Club (Lars Higdon)

Community Events and Programs

- July 10 - Environmental Fun Fair at the Lussier Family Heritage Center with a Rainfall Simulator Demo (Susan Sandford/Landon Baumgartner/Megan Sullivan/Calliana Wickus/Christal Campbell/Claudia Guy)

- July 23 - Youth Fishing Event at Stewart Lake County Park (Lael Pascual, Pete Jopke, Curt Diehl)
- July 29 – Cycle of a Butterfly table activity at Olbrich Gardens Butterfly Day (Megan Sullivan/Emily Reed/John Anderson/Calliana Wickus/Grace Henes)
- August 2- - Rainfall Simulator Demo and Parks table at the Waste and Renewables Open House (Landon Baumgartner/Laurie Lambert/Amy Cox)
- August 8 - Full Moon Luminary Walk
- August 10 - Heritage Center nature activity at the Monarch Festival Oregon Nature Conservancy (Megan Sullivan)
- Aug 14 - Edgewood in the Community at W.G. Lunney Lake Farm County Park with Edgewood High School Students (Clare Carlson/Amy Cox)
- Sept 14 - Edgewood in the Community at Schumacher Farm with Edgewood High School Students (Claire Lamberg)
- September 18 – Barks for Parks at Prairie Moraine Dog Park (Susan Sandford/Chad Haanen/Taylor Mason)
- Sept 18 - Rainfall Simulator Demo at Schumacher Farm Heritage Fest (Landon Baumgartner/Curt Diehl)
- Sept 24 - Rooted Harvest Festival with Rainfall Simulator and park info (Susan Sandford/ Laurie Lambert/ Landon Baumgartner)
- Monthly Disc Golf Popups with Karben4 Brewing and DCP Rangers June through September. Free discs to borrow and waived permit fees during the event.

Heritage Center Recurring Programs

Amy Cox, Megan Sullivan, Calliana Wickus, and John Anderson

- Lil' Explorers Outdoor Adventure – 7/1; 8/5; 9/2; 9/ 16; 10/7; 10/21
- Fishing Adventure – 7/1; 7/25; 7/29; 8/12
- Learn to Fish – 7/8; 7/22; 8/5; 8/19; 8/26
- StoryTime – 7/5; 7/12; 7/19; 7/26; 8/2; 8/9; 8/16
- Learn to Bike – 7/27; 8/3; 8/17; 8/24
- Owl Walk – 9/21; 10.12; 10/19
- Epic Recreational Adventure - 7/26
- Get Outside! with Goodman Center Girls Inc – 7/6; 8/1; 10/17
- Get Outside! with Bayview – 7/14; 8/2; 9/14; 9/20; 9/27; 10/4; 10/11; 10/18
- Get Outside! with Bridge Lakepoint Waunona – 7/18; 8/8; 8/9; 9/12; 10/10; 10/24
- Get Outside! with Kennedy-Heights Community Center – 7/18; 7/27; 8/15; 9/13; 9/20
- Paddles In the Park on the Sugar River (7/28; 9/8), Black Earth Creek (8/11) and the Lower Yahara River (10/9)
- Junior Naturalist Elementary – session 1 – six classes
- Junior Naturalist Middle with Centro Hispano - six classes
- Junior Naturalist Elementary – session 2 – six classes
- Junior Naturalist Middle – seven classes

- Junior Naturalist Elementary – session 3 – six classes

Workshops and Training

- July 26 - A Beginner's Guide to ISMTrack Workshop for Dane County Parks volunteers (Claire Lamberg)
- Aug 25 – Rain Garden Workshop for Friends of Lake Kegonsa and Kegonsa shoreline property owners (Susan Sandford/Christal Campbell)
- Sept 13 - ISMTrack Review and Practice Workshop for Dane County Parks volunteers (Claire Lamberg)
- Sept 17 - Habitat for Humanity Rain Garden Installation/Educational Event (Christal Campbell/Theresa Nelson)
- Sept 20/27 - Water Stewards Program with Sustain Dane (Christal Campbell)

Volunteer Events

This includes events hosted or supported heavily by staff but is not a complete list of events hosted by parks friends groups or other conservation groups in the county.

- 50 – Seed Collection Events at various County Park properties (Lars Higdon/ Shane Otto/ Claire Lamberg/Grace Henes/Tom Klein/ Jaedan)
- 12- Prairie Seed Cleaning Events (Lars Higdon/Shane Otto)
- 3 - Seed Collection Events with Youth Volunteers for Conservation (Calliana Wickus)
- 10 - Volunteer Restoration Workdays at various parks (Lars Higdon/ Shane Otto/ Claire Lamberg)

There is a new [DCP volunteer newsletter and email interest lists](#) so people interested in volunteering can get notices and information straight to their inbox.

Tabling at Events

- Oct 5 – Dane County Parks info table at the Verona Farmers Market (Amy Cox/Megan Sullivan)

Interviews/Print

- Sept 2 – “Mississippi River and Vegetation and Fishery in the Yahara chain of lakes” I-Heart Radio Outdoors (Pete Jopke)
- Sept 26 – “Alternative Land Management – Goats” NBC15 (Lael Pascual)
- Sept 27 – “Small farm pollution can slip through the cracks and be hard to enforce” Wisconsin Examiner (Amy Piaget)

**DANE COUNTY 2023 ANNUAL WORK PLAN
LOCALLY-IDENTIFIED PRIORITIES**

Table 1: Planned activities and performance measures by category

CATEGORY (goal and objective from LWRM plan can be added in each category)	PLANNED ACTIVITIES WITH BENCHMARKS If applicable identify focus areas, e.g. HUC 12 watershed code	PERFORMANCE MEASUREMENTS
<ul style="list-style-type: none"> • <i>Cropland</i> 		
<p>Cropland, soil health and/or nutrient management</p> <p>LWRMP Goals/Objectives</p> <ul style="list-style-type: none"> • I. A. Reduce the quantity of sediment and nutrients reaching surface water and groundwater. • I. B. Improve soil health to reduce soil erosion, improve infiltration and reduce nutrient losses. • I. G. Build awareness regarding economic and environmental value of developing and implementing a nutrient management plan. 	<p>Cropland Practices</p> <ul style="list-style-type: none"> • Cover crops – 3,000 acres • Critical area planting – 7 projects • Diversion – 1 project • Field border – 1 project • Filter strip – 1 project • Grade stabilization – 1 project • Grassed waterways – 19 projects • WASC0B – 1 project <p>Nutrient Management</p> <ul style="list-style-type: none"> • Cost-share 1,000 acres of NM with DATCP funds • Cost-share 1,500 acres of cover crops with DATCP funds • Review approximately 50 submitted NMPs • Implement winter spreading permit requirements under Chapter 49 <p>Landscape Assessments/Projects</p> <ul style="list-style-type: none"> • Conduct spring and fall crop and tillage survey • Continue mapping acres covered by NMPs 	<p>Type and units of practice(s) installed Amount of cost-share dollars spent # lbs of P reduced (calculated for targeted watersheds only)</p>
<ul style="list-style-type: none"> • <i>Livestock</i> 		
<p>Livestock</p> <p>LWRMP Goals/Objectives</p> <ul style="list-style-type: none"> • I. A. Reduce the quantity of sediment and nutrients reaching surface water and groundwater. • I. B. Improve soil health to reduce soil erosion, improve infiltration and reduce nutrient losses. 	<p>Livestock Practices</p> <ul style="list-style-type: none"> • Lot relocation/abandonment – 1 project • Waste storage facility – 3 projects • Waste storage closure – 10 projects • Fencing – 19 projects • Access control – 1 project • Mulching – 4 projects • Obstruction removal – 4 projects • Livestock pipeline – 20 projects 	<p>Type and units of practice(s) installed Amount of cost-share dollars spent # lbs of P reduced (calculated for targeted watersheds only)</p>

**DANE COUNTY 2023 ANNUAL WORK PLAN
LOCALLY-IDENTIFIED PRIORITIES**

<ul style="list-style-type: none"> I. G. Build awareness regarding economic and environmental value of developing and implementing a nutrient management plan. 	<ul style="list-style-type: none"> Prescribed grazing – 7 projects Roof runoff structure – 16 projects Heavy use protection – 1 project Trails and walkways – 1 project Watering facility – 14 projects Underground outlet – 9 projects Waste treatment – 2 projects Waste transfer – 6 projects <p>Landscape Assessments</p> <ul style="list-style-type: none"> Continue mapping locations of installed, cost-shared practices Continue mapping the location of manure storage facilities Implement permitting requirements in Chapter 49 (winter spreading, certificate of use, manure storage permitting) 	
---	---	--

• *Water quality*

<p>Water quality/quantity</p> <p>LWRMP Goals/Objectives</p> <ul style="list-style-type: none"> I. A. Reduce the quantity of sediment and nutrients reaching surface water and groundwater. III. A. Encourage new methods of water quality improvement. IV. A. Protect, restore and stabilize streambanks and shorelines. 	<p>Water Quality</p> <ul style="list-style-type: none"> Well decommissioning – 1 project Stream crossing – 2 projects Streambank and shoreline protection – 6 projects <p>Water Quantity</p> <ul style="list-style-type: none"> Evaluate opportunities for flood mitigation and increase in infiltration from agricultural landscapes. 	<p>Type and units of practice(s) installed</p> <p>Amount of cost-share dollars spent</p> <p># lbs of P reduced (calculated for targeted watersheds only)</p>
--	--	--

<p>Forestry</p>	<p><i>Practice installation</i></p>	<p><i>Type and units of practice(s) installed</i></p> <p><i>Amount of cost-share dollars spent</i></p> <p><i># lbs of sediment reduced (using any approved method)</i></p> <p><i># lbs of P reduced (using any approved method)</i></p>
------------------------	-------------------------------------	---

• *Invasive*

<p>Invasive species</p> <p>LWRMP Goals/Objectives</p> <ul style="list-style-type: none"> IV. E. Develop/expand invasive species programs aimed at preventing introduction of new 	<p>Surveys</p> <ul style="list-style-type: none"> Point-intercept surveys <p>Management plans</p> <ul style="list-style-type: none"> Update APM for Monona and Mendota Install signage where needed 	<p># surveys completed</p> <p># lbs. of carp removed</p> <p># hours logged at boat landings</p>
--	--	---

**DANE COUNTY 2023 ANNUAL WORK PLAN
LOCALLY-IDENTIFIED PRIORITIES**

<p>species and reducing existing species.</p> <ul style="list-style-type: none"> • V. D. Educate and inform the public about the threats posed by aquatic and terrestrial invasive and exotic species. 	<p>Control</p> <ul style="list-style-type: none"> • Final review of eradication success for Yellow Floating Heart in a small pond in Northern Dane County • Continue Wetland Invasive Plan (WIP) pilot project to encourage citizen participation in the Purple Loosestrife Biocontrol Program • Continue Clean Boats Clean Waters programming at public boat landings • Continue carp management programs on Fish, Mud, Crystal and Indian Lakes • Continue aquatic plant management harvesting program according to the management plan, harvesting maps and DNR permits • Aerial mapping via drone of Cherokee Marsh for phragmites IPM treatment 	
---	--	--

• *Wildlife*

<p>Wildlife-We tlands-Habitat</p> <p>LWRMP Goals/Objectives</p> <ul style="list-style-type: none"> • II. A. Reduce the rate of urban expansion by preserving priority farmlands and open space. • IV. A. Protect, restore and stabilize streambanks and shorelines. • IV. C. Restore wetland and upland habitat. • IV. D. Minimize conversion of wetlands to agricultural and urban development. • V. A. Make grants available to local units of government and non-profits to protect and enhance land and water resources. 	<p>Wetlands</p> <ul style="list-style-type: none"> • Wetland Restoration – 1 project <p>Wildlife programs</p> <ul style="list-style-type: none"> • Continue to participate in APHIS programs • Continue to participate in deer and turkey donation programs <p>Plant sales</p> <ul style="list-style-type: none"> • Continue to manage and participate in the Plant Dane Program offering native plants at discounted prices and plant donations to organizations <p>Habitat programs</p> <ul style="list-style-type: none"> • Conservation cover – 3 projects • Stream habitat improvement – 2 projects • Forage and biomass planting – 6 projects • Continue to implement Dane County’s Continuous Cover Program 	<p># acres of wetland restored</p> <p># plants sold/donated</p> <p># acres in Conservation Cover Program</p> <p># acres protected by conservation and agricultural preservation easements</p> <p># miles of streams protected with easements</p> <p># CRP contracts assisted</p>
--	--	--

• *Urban*

<p>Urban issues</p>	<p>Stormwater control</p> <ul style="list-style-type: none"> • Review and issue stormwater management plans and permits 	<p># inspections</p> <p># plans reviews</p> <p># permits issued</p>
----------------------------	--	---

**DANE COUNTY 2023 ANNUAL WORK PLAN
LOCALLY-IDENTIFIED PRIORITIES**

<p>LWRMP Goals/Objectives</p> <ul style="list-style-type: none"> I. D. Improve and enhance erosion control and stormwater management runoff to reduce the quantity of runoff and improve the quality of runoff. V. A. Make grants available to local units of government and non-profits to protect and enhance land and water resources. V. H. Work with agencies, consultants, contractors and developers to ensure erosion control and stormwater management requirements are met. 	<ul style="list-style-type: none"> Conduct stormwater management compliance inspections and enforcement <p>Erosion control</p> <ul style="list-style-type: none"> Review and issue erosion control and shoreland erosion control plans and permits Conduct erosion control and shoreland erosion control compliance inspections and enforcement <p>Grants</p> <ul style="list-style-type: none"> Continue to implement the Urban Water Quality Grant Program 	<p># compliance issues resolved # of grants issued and dollars awarded</p>
--	--	--

• *Watershed*

<p>Watershed strategies</p> <p>LWRMP Goals/Objectives</p> <ul style="list-style-type: none"> I. A. Reduce the quantity of sediment and nutrients reaching surface waters and groundwater. I. B. Improve soil health to reduce soil erosion, improve infiltration and reduce nutrient losses. III. A. Encourage new methods of water quality improvement. IV. A. Protect, restore and stabilize streambanks and shorelines. V. C. Support individuals along with watershed groups and organizations in their education of citizens about resource improvement; pollution prevention. V. F. Promote partnerships to leverage funding and resources for conservation practices in order to target funding or resource gaps in the county. 	<p>Phosphorus Compliance Programs</p> <p>- Active Service Agreement(s)</p> <ul style="list-style-type: none"> Yahara WINS Dane-Iowa Wastewater Treatment Facility Cross Plains Wastewater Treatment Facility Springfield Clean Water LLC Blue Mounds Wastewater Treatment Facility <p>- Projects under Discussion/Service Agreement(s) being Developed</p> <ul style="list-style-type: none"> Mt. Horeb Roxbury <p>Farmer-Led Watershed Groups</p> <ul style="list-style-type: none"> Provide assistance as requested to Yahara Pride Farms and Farmers for the Upper Sugar River Provide collaborating entity support to Biological Farming Friends (BFFs) producer led organization <p>Local Watershed Strategies</p> <ul style="list-style-type: none"> Implementation of the Dane County RCPP project in the Yahara and Sugar River Watersheds 	<p># meetings attended/presentations given</p>
---	--	--

**DANE COUNTY 2023 ANNUAL WORK PLAN
LOCALLY-IDENTIFIED PRIORITIES**

	<ul style="list-style-type: none"> • Establishment of the Dane County Demonstration Farm Network • Manure management/treatment feasibility study 	
--	--	--

Other	<i>PL 566 Non-metallic and frac sand mining</i>	<i>Number of plans reviewed Number of inspections</i>
--------------	---	---

Table 2: Planned activity related to permits and ordinances

Permits and Ordinances	Plans/application reviews anticipated	Permits anticipated to be issued
Feedlot permits	n/a	n/a
Manure storage construction and transfer systems	5	5
Manure storage closure	5	5
Livestock facility siting	n/a	n/a
Nonmetallic/frac sand mining	n/a	n/a
Stormwater and construction site erosion control	300	300
Shoreland zoning	n/a	n/a
Wetlands and waterways (Ch. 30)	n/a	n/a
Other		
Winter Spreading Permits (Ch. 49 DC Ordinance)	25	10
Certificate of Use (Ch. 49 DC Ordinance)	50	50

Table 3: Planned inspections

Inspections	Number of inspections planned
Total Farm Inspections	
For FPP	300
For NR 151	
Animal waste ordinance	30
Livestock facility siting	n/a
Stormwater and construction site erosion control	300
Nonmetallic mining	n/a

**DANE COUNTY 2023 ANNUAL WORK PLAN
LOCALLY-IDENTIFIED PRIORITIES**

Table 4: Planned outreach and education activities

Activity	Number
Tours	1
Field days	3
Trainings/workshops	2
School-age programs (camps, field days, classroom)	1
Newsletters	12
Social media posts	50
News release/story	5

Table 5: Staff Hours and Expected Costs (staff can be combined or listed individually)

Staff/Support (Land Conservation Division Staff only)	Estimated Hours	Estimated Costs (Salary + Fringe)
County Conservationist (x1)	2,080	\$152,000
Engineer (x1)	2,080	\$147,000
Conservation Specialist – Advanced (x2)	4,160	\$248,000
Conservation Specialist II (x6)	12,480	\$614,000
Conservation Outreach Specialist LTE (x1)	1,200	\$46,000
Conservation Technician (x1)	2,080	\$92,000
Agronomist – Demo Farm (x1)	2,080	\$78,000
Data Analyst (x1)	2,080	\$119,000
Cost Sharing (can be combined)		
Bond (State)	n/a	\$65,000
Bond (County)	n/a	\$4,000,000
SEG (County)	n/a	\$125,000
SEG (State)	n/a	\$75,000
EQIP (Federal)	n/a	\$500,000

Table 6: HUC12s with Targeted Watershed Projects

HUC12	Name	Project Name
070700050501	Upper Black Earth Creek	Cross Plains-Water Quality Trading
070700050502	Middle Black Earth Creek	Cross Plains-Water Quality Trading
070700050503	Halfway Prairie Creek	Dane Iowa-Adaptive Management
070700050504	Lower Black Earth Creek	Dane Iowa-Adaptive Management

**DANE COUNTY 2023 ANNUAL WORK PLAN
LOCALLY-IDENTIFIED PRIORITIES**

HUC12	Name	Project Name
070700050502	Middle Black Earth Creek	Dane Iowa-Adaptive Management
070700050501	Upper Black Earth Creek	Dane Iowa-Adaptive Management
070900020502	100 Mile Grove Cemetery	Yahara WINS-Adaptive Management/RCPP
070900020803	Badfish Creek	Yahara WINS-Adaptive Management/RCPP
070900020504	Cherokee Lake-Yahara River	Yahara WINS-Adaptive Management/RCPP
070900020903	City of Stoughton-Yahara River	Yahara WINS-Adaptive Management/RCPP
070900020901	Door Creek	Yahara WINS-Adaptive Management/RCPP/Impaired Waters
070900020501	Goose Lake-Yahara River	Yahara WINS-Adaptive Management/RCPP
070900020902	Lake Kegonsa-Yahara River	Yahara WINS-Adaptive Management/RCPP
070900020604	Lake Mendota-Yahara River	Yahara WINS-Adaptive Management/RCPP
070900020702	Lake Monona-Yahara River	Yahara WINS-Adaptive Management/RCPP
070900020703	Lake Waubesa-Yahara River	Yahara WINS-Adaptive Management/RCPP
070900020801	Oregon Branch	Yahara WINS-Adaptive Management/RCPP
070900020603	Pheasant Branch	Yahara WINS-Adaptive Management/RCPP
070900020802	Rutland Creek-Badfish Creek	Yahara WINS-Adaptive Management/RCPP
070900020602	Sixmile Creek	Yahara WINS-Adaptive Management/RCPP
070900020701	Starkweather Creek	Yahara WINS-Adaptive Management/RCPP
070900020904	Stoughton Airfield-Yahara River	Yahara WINS-Adaptive Management/RCPP
070900020503	Token Creek	Yahara WINS-Adaptive Management/RCPP
070900020601	Waunakee Marsh-Sixmile Creek	Yahara WINS-Adaptive Management/RCPP
070900020905	Yahara River	Yahara WINS-Adaptive Management/RCPP
70900040101	Mt. Vernon Creek	RCPP
70900040102	Primrose Branch-West Branch Sugar River	RCPP
70900040103	West Branch Sugar River	RCPP
70900040201	Badger Mill Creek	RCPP
70900040202	Headwaters Sugar River	RCPP
70900040203	Paoli-Sugar River	RCPP
70900040301	City of Evansville-Allen Creek	RCPP
70900040402	Ward Creek-Little Sugar River	RCPP
70900040501	Story Creek	RCPP
70900040502	Ross Crossing-Sugar River	RCPP

CORRESPONDENCE/MEMORANDUM

STATE OF WISCONSIN

DATE: January 24, 2023

TO: Land and Water Conservation Board Members and Advisors

FROM: Tim Anderson, DATCP
Land and Water Resources Bureau

SUBJECT: Recommendation to Adjust County Spending Authorities for the Conservation Reserve Enhancement Program (CREP) in 2023

Recommended Action: This is an action item. DATCP requests that the LWCB recommend approval of the proposed adjustments to the county CREP spending authorities.

Summary: Since the last program wide allocation adjustment Columbia, Dodge, Fond du Lac, Manitowoc and Outagamie counties have seen unanticipated increases in CREP enrollment and cost share payments to landowners. These counties have requested an increase to their CREP spending allocation. Increases in allocations to these counties will come from existing funds in the uncommitted balance. The proposed adjustments will allow the state and counties to continue to implement CREP at the current rate without interruption for the next two years.

The Wisconsin Conservation Reserve Enhancement Program (CREP) has been in place since October 2001 when Wisconsin signed a CREP agreement with USDA authorizing enrollment of 100,000 acres into CREP. In December 2018 Congress passed the 2018 Farm Bill which extended authority for enrollment in CREP to September 30, 2023. DATCP maintains State-County CREP contracts that provide specific spending authority to counties based on anticipated participation. This contract includes provisions for DATCP to amend the county spending authority that include an opportunity for counties to discuss proposed spending authority changes with the LWCB and the LWCB making final recommendations to the DATCP Secretary.

Through the partnership of local, State and Federal offices, the Wisconsin CREP program has seen continued landowner participation and enrollment. Wisconsin dedicated \$28 million in spending authority for implementing the State side of CREP. To date, the state has made 12,861 incentive and cost share payments totaling about \$21.8 million to 7,000 landowners on about 74,000 acres. State CREP payments, together with \$4.3 million in county in-kind contributions to implement CREP locally, leverage over \$200 million in federal funds for CREP that will be paid out to landowners.

To maintain adequate funding at the county level for enrollment, the current county CREP spending authority allocations need to be increased for Columbia, Dodge, Fond du Lac, Manitowoc and Outagamie counties. The source of funds to increase county allocations can either come from reductions to other counties allocations or from the uncommitted balance. DATCP maintains uncommitted funds that are used for supplies associated with program implementation or to periodically balance county allocations. In the previous reallocation, the

uncommitted allocation was increased to \$287,000 in order to allow for future county allocation adjustments and currently has a balance of \$204,000.

Recommended county allocation increases reallocate \$180,000 from the uncommitted balance, leaving \$24,000 in the uncommitted balance. The attached table lists the proposed adjustments to CREP allocations for the affected counties and the uncommitted balance. The proposed changes to allocations aim to maintain sufficient funds over the next two years for the counties to continue implementing CREP at current levels.

Landowners and producers have been paid approximately 80% of the existing \$28 million in bond authority under CREP. The Department estimates that additional funding will be needed in order to continue beyond the next biennium.

DATCP informed all affected CREP counties about the proposed 2023 spending authority amendment via email on January 20, 2023.

Materials Provided: Table titled *CREP – Allocation Adjustment Schedule* (lists by county the current CREP spending authority allocation, current payments, current balance, proposed spending authority allocation, and the balance under the proposed allocation)

Presenter(s): Brian C. Loeffelholz

CREP - Allocation Adjustment Schedule

Note: based on spending as of 1/19/2023

County	Current Allocation			Proposed Allocation		Adjustment
	Allocation	Total Payments*	Balance	Allocation	Balance	
Adams	\$50,000	\$484	\$49,516	\$50,000	\$49,516	
Ashland	\$30,000	\$15,767	\$14,233	\$30,000	\$14,233	
Barron	\$60,000	\$31,301	\$28,699	\$60,000	\$28,699	
Bayfield	\$40,000	\$26,496	\$13,504	\$40,000	\$13,504	
Brown	\$240,000	\$164,973	\$75,027	\$240,000	\$75,027	
Buffalo	\$650,000	\$389,013	\$260,987	\$650,000	\$260,987	
Calumet	\$90,000	\$64,761	\$25,239	\$90,000	\$25,239	
Chippewa	\$2,500,000	\$1,868,989	\$631,011	\$2,500,000	\$631,011	
Clark	\$90,000	\$60,625	\$29,375	\$90,000	\$29,375	
Columbia	\$170,000	\$175,373	-\$5,373	\$210,000	\$34,627	Increase
Crawford	\$260,000	\$198,616	\$61,384	\$260,000	\$61,384	
Dane	\$1,800,000	\$1,620,929	\$179,071	\$1,800,000	\$179,071	
Dodge	\$510,000	\$554,259	-\$44,259	\$620,000	\$65,741	Increase
Door	\$130,000	\$108,504	\$21,496	\$130,000	\$21,496	
Douglas	\$10,000	\$0	\$10,000	\$10,000	\$10,000	
Dunn	\$230,000	\$162,288	\$67,712	\$230,000	\$67,712	
Eau Claire	\$390,000	\$213,478	\$176,522	\$390,000	\$176,522	
Fond du Lac	\$240,000	\$211,975	\$28,025	\$250,000	\$38,025	Increase
Grant	\$1,900,000	\$1,530,759	\$369,241	\$1,900,000	\$369,241	
Green	\$810,000	\$707,219	\$102,781	\$810,000	\$102,781	
Green Lake	\$40,000	\$22,816	\$17,184	\$40,000	\$17,184	
Iowa	\$2,800,000	\$2,457,616	\$342,384	\$2,800,000	\$342,384	
Iron	\$10,000	\$0	\$10,000	\$10,000	\$10,000	
Jackson	\$20,000	\$2,413	\$17,587	\$20,000	\$17,587	
Jefferson	\$660,000	\$439,077	\$220,923	\$660,000	\$220,923	
Juneau	\$470,000	\$241,086	\$228,914	\$470,000	\$228,914	
Kewaunee	\$140,000	\$90,911	\$49,089	\$140,000	\$49,089	
La Crosse	\$65,000	\$42,593	\$22,407	\$65,000	\$22,407	
Lafayette	\$5,000,000	\$4,090,024	\$909,976	\$5,000,000	\$909,976	
Manitowoc	\$320,000	\$307,403	\$12,597	\$330,000	\$22,597	Increase
Marathon	\$180,000	\$102,999	\$77,001	\$180,000	\$77,001	
Marquette	\$40,000	\$18,570	\$21,430	\$40,000	\$21,430	
Monroe	\$640,000	\$560,614	\$79,386	\$640,000	\$79,386	
Outagamie	\$55,000	\$53,464	\$1,536	\$65,000	\$11,536	Increase
Ozaukee	\$60,000	\$29,806	\$30,194	\$60,000	\$30,194	
Pepin	\$220,000	\$115,603	\$104,397	\$220,000	\$104,397	
Pierce	\$120,000	\$52,718	\$67,282	\$120,000	\$67,282	
Portage	\$150,000	\$75,433	\$74,567	\$150,000	\$74,567	
Racine	\$270,000	\$211,500	\$58,500	\$270,000	\$58,500	
Richland	\$420,000	\$312,380	\$107,620	\$420,000	\$107,620	
Rock	\$1,720,000	\$1,359,492	\$360,508	\$1,720,000	\$360,508	
Saint Croix	\$210,000	\$116,118	\$93,882	\$210,000	\$93,882	
Sauk	\$1,700,000	\$1,367,641	\$332,359	\$1,700,000	\$332,359	
Shawano	\$20,000	\$2,116	\$17,884	\$20,000	\$17,884	
Sheboygan	\$40,000	\$21,751	\$18,249	\$40,000	\$18,249	
Taylor	\$60,000	\$20,367	\$39,633	\$60,000	\$39,633	
Vernon	\$250,000	\$172,946	\$77,054	\$250,000	\$77,054	
Walworth	\$650,000	\$515,554	\$134,446	\$650,000	\$134,446	
Washington**	\$8,000	\$7,418	\$582	\$8,000	\$582	
Waukesha	\$5,000	\$1,817	\$3,183	\$5,000	\$3,183	
Waupaca	\$370,000	\$284,965	\$85,035	\$370,000	\$85,035	
Waushara	\$40,000	\$16,094	\$23,906	\$40,000	\$23,906	
Winnebago	\$280,000	\$175,488	\$104,512	\$280,000	\$104,512	
Wood	\$480,000	\$335,327	\$144,673	\$480,000	\$144,673	
Uncommitted Balance	\$287,000	\$82,559	\$204,441	\$107,000	\$24,441	Decrease
Totals	\$28,000,000	\$21,812,488	\$6,187,512	\$28,000,000	\$6,187,512	

* Total Payments = Paid - Received - Receivable

** County no longer eligible in the Federal CREP Agreement for Wisconsin.

CORRESPONDENCE/MEMORANDUM _____ State of Wisconsin

DATE: January 27, 2023

TO: Land and Water Conservation Board (“LWCB” or “Board”) Members and Advisors

FROM: LWCB Advisory Committee on Research (“Committee”)

SUBJECT: Update from January 12, 2023 Committee Proceedings

The Committee is not requesting actions from the LWCB at this time.

On August 2, 2022 the LWCB delegated to the Committee the authority to, “*create, implement and oversee the process for the State of Wisconsin Land & Water Conservation Board to advise the University of Wisconsin System on research and outreach needs relating to soil & water conservation.*” As a perennial duty, the Committee’s ideal timeline initiates each September and concludes the following May. The Committee will conclude its work by issuing the Board a list of soil & water conservation research and outreach needs for consideration (“*the list*”). The Committee uses input from stakeholders surveyed over the winter to create *the list*.

On January 12, 2023 the Committee approved an outreach letter and an electronic survey, both of which will be sent out to stakeholder groups on February 23, 2023 to gather input needed to create *the list*. Once sent, stakeholders will be provided 30 days to reply. Copies of the approved outreach letter and survey are provided in this meeting packet for informational purposes.

The Committee has tasked its members with developing the stakeholder contact lists, which are due on February 10th. The stakeholder lists were assigned according to the following categories:

- **Agencies:** Federal and State
- County Conservation Departments & Boards
- **Non-profit Sector:** Conservation and environmental organizations with an interest in this topic
- **For-Profit Sector:** Businesses with an interest (i.e. products and services) related to the topic

When the survey closes on March 25, Department staff will analyze the response data and present the findings to the Committee at its May meeting. From the data, the Committee will prepare *the list* of soil & water conservation research and outreach needs. The Committee is on track to present *the list* to the LWCB at the June 2023 Board meeting.

Once the Committee makes its recommendations to the LWCB, it will be the Board’s duty to determine the next steps in the process towards advising the UW-System. The Board may wish to consider discussing preparations and actions needed to fulfill its duty to advise the UW-System at the April Board meeting. At that time, the Board may also wish to consider how and when it will incorporate public feedback into the Board’s process.

The Committee plans to next meet on March 7, 2023. At this meeting, the Committee expects to plan for the analysis of stakeholder feedback and create the format used to recommend the list to the Board.

The Committee congratulates Ron Grasshoff and Bobbie Webster who were both re-elected on January 12, 2023 to serve as the 2023 Committee Chair and Vice-Chair, respectively. The Committee also extends its appreciation to John Exo for his service to the Committee, his advocacy to create the Committee, and his efforts to guide the scope of the Committee's role and duties. We wish John all the best in his next ventures.



State of Wisconsin

Land and Water Conservation Board

PO Box 8911
Madison, WI 53708-8911
608-224-4650

ADDRESS BLOCK
ADDRESS BLOCK
ADDRESS BLOCK

RE: Research and outreach needs associated with agricultural soil & water resources

Dear _____,

Wisconsin’s Land & Water Conservation Board seeks your specific expertise and input regarding research and outreach needs related to agricultural soil & water resources. The Board has a duty to gather this information from its partners and stakeholders to further soil & water conservation in Wisconsin. To facilitate this duty, the Board created and charged the *Advisory Committee on Research* to conduct the necessary outreach. Ultimately, stakeholder feedback will be delivered to the University of Wisconsin as recommendations to achieve soil & water conservation research needs.

The purposes of this effort are to:

- Identify important research needs related to soil & water resource issues in Wisconsin
- Convey those identified needs to UW researchers seeking project funding
- Assist in identifying research gaps

To facilitate your input, we have created an electronic survey to collect feedback. Please access the survey at www.surveymonkey.com/r/##### or access the survey using this QR code:

PLACE HOLDER
FOR
QR CODE

Responses are due: **Sunday March 26th**

On behalf of the Wisconsin Land & Water Conservation Board, we sincerely appreciate your contribution to this effort and look forward to sharing a summary of our findings.

Sincerely,

[Signature]

Mark E. Cupp, Chair
Wisconsin Land and Water Conservation Board

Mark Cupp, Chair ♦ Bobbie Webster, Vice-Chair
Monte Osterman, Secretary
Members: Ron Grasshoff ♦ Andrew Buttles ♦ Mike Hofberger ♦ Robert Thome, Jr.
Brian McGraw ♦ Andrew Potts ♦ Jill Schoen ♦ Brian Weigel



LWCB Annual Survey
Soil & Water Conservation Research and Educational Needs

Wisconsin's Land & Water Conservation Board ("Board") seeks your specific expertise and input. Please complete the Board's annual survey on research and educational needs related to agricultural soil & water conservation in Wisconsin by March 26th.

Respondent feedback will be used to generate a list of recommendations to achieve soil & water conservation research needs in Wisconsin. The Board will advocate for these recommendations across the University of Wisconsin System.

(Your response is expected to take approximately 5 minutes)

* 1. What is your name?

* 2. What is your work email address?

* 3. What is your profession?

- | | |
|--|--|
| <input type="radio"/> Federal or State Government Agency | <input type="radio"/> Private Sector (e.g. Producer, Crop Consultant, Env. Engineering etc.) |
| <input type="radio"/> County or local Government | <input type="radio"/> University of Wisconsin |
| <input type="radio"/> County Conservationist | <input type="radio"/> Academic |
| <input type="radio"/> Non-profit | |

Other (please specify)

* 4. Are you submitting a response on behalf of an affiliate organization?

- Yes
 No

5. If you are submitting on behalf of an affiliate, name the affiliate organization?

* 6. What is the highest priority for research or outreach/education?

(Select one to be redirected to specific additional questions)



State of Wisconsin

Land and Water Conservation Board

PO Box 8911
Madison, WI 53708-8911
608 - 224 - 4650

LWCB Annual Survey
Soil & Water Conservation Research and Educational Needs

7. What is the highest priority for soil related research?

(Select one answer from the dropdown menu)

What aspect of the priority requires attention?

8. What is the next priority for soil related research?

(Select one answer from the dropdown menu)

What aspect of the priority requires attention?

9. Would you like to suggest water research or outreach/educational priorities?

- Yes, Water Research
- Yes, Outreach/Education
- No (Complete Survey)



State of Wisconsin

Land and Water Conservation Board

PO Box 8911
Madison, WI 53708-8911
608 - 224 - 4650

LWCB Annual Survey
Soil & Water Conservation Research and Educational Needs

10. What is the highest priority for water related research?

(Select one answer from the dropdown menu)

What aspect of the priority requires attention?

11. What is the next priority for water related research?

(Select one answer from the dropdown menu)

What aspect of the priority requires attention?

12. Would you like to suggest soil research or outreach/educational priorities?

- Yes, Soil Research
- Yes, Outreach/Education
- No (Complete Survey)



State of Wisconsin

Land and Water Conservation Board

PO Box 8911
Madison, WI 53708-8911
608 - 224 - 4650

LWCB Annual Survey
Soil & Water Conservation Research and Educational Needs

13. What is the highest priority for outreach and educational needs related soil and water?

(Select one answer from the dropdown menu)

What aspect of the priority requires attention?

14. What is the next priority for outreach and educational needs related soil and water?

(Select one answer from the dropdown menu)

What aspect of the priority requires attention?

15. Would you like to suggest soil or water research priorities?

- Yes, Soil Research
- Yes, Water Research
- No (Complete Survey)

CORRESPONDENCE/MEMORANDUM

DATE: February 7, 2023

TO: LWCB members and advisors

FROM: Ian Krauss

SUBJECT: FSA Program Updates for February LWCB Meeting

- Pandemic Assistance Programs
 - The USDA has begun to roll out the [Emergency Relief Program \(ERP\)](#) Phase Two as well as the new [Pandemic Assistance Revenue Program \(PARP\)](#), which are two programs to help offset crop and revenue losses for producers. Signup is officially ongoing and the FSA has statewide training scheduled for County Office staff next week.
- ARC/PLC signup is underway and the deadline for enrollment is March 15th, 2023.
- Conservation Reserve Program
 - Continuous Signup 59, which includes CREP, Highly Erodible Land Initiative (HELI), and State Acres for Wildlife Enhancement (SAFE), are currently active and accepting offers.
 - We are still awaiting National Office approval for the updated Soil Rental Rates, once approved these new rates will be in effect for producer offers.
 - It is expected that there will be another General Signup this fiscal year. A formal announcement outlining signup dates, deadlines, and policy is forthcoming.

NRCS Wisconsin Quarterly Update



Environmental Quality Incentives Program

EQIP is the primary program available to farmers for farm and woodland conservation work, offering payments for over 90 basic conservation practices. Applications are accepted on a continuous, year-round basis. Applications received by November 4, 2022 will be evaluated and considered for potential funding in Fiscal Year 2023. Contact Melissa Bartz, melissa.bartz@usda.gov, for more information.

Conservation Stewardship Program

CSP provides assistance to landowners who practice good stewardship on their land and are willing to take additional steps over the next five years to further enhance their stewardship efforts. Applications are accepted on a continuous year-round basis. Applications received by February 10, 2023, will be evaluated and considered for funding in Fiscal Year 2023 for CSP Classic sign-up. Contact Melissa Bartz, melissa.bartz@usda.gov, for more information.

Regional Conservation Partnership Program

The Regional Conservation Partnership Program promotes coordination between NRCS and its partners to deliver conservation assistance to producers and landowners. NRCS provides assistance to producers through partnership agreements and through program contracts or easement agreements. Current active projects for water quality improvement are located within the Oconomowoc River, Milwaukee River and Yahara River watersheds, Driftless Area to improve fish and wildlife habitat, stream and riparian habitat, and select counties in Northern Wisconsin to improve Golden-winged and Kirtland’s warblers’ habitats, and select areas of Southern Wisconsin to improve soil health and protect agriculturally productive farmland. Contact Melissa Bartz, melissa.bartz@usda.gov, for more information.

Agricultural Conservation Easement Program

The Agricultural Conservation Easement Program (ACEP) focuses on restoring and protecting wetlands, conserving productive agricultural lands and conserving grasslands. Landowners are compensated for enrolling their land in easements. Applications for the ACEP are taken on a continuous basis, and they are ranked and considered for funding one time a year. The outlook for FY23 is good with additional funding from the Great Lakes Restoration Initiative for 2023 projects. The application deadline for 2023 ACEP proposals and projects was October 31, 2022. An additional sign up will be announced for ACEP funding through IRA. Contact Dave Gundlach, david.gundlach@usda.gov, for more information.

NRCS Programs Financial Update			
Program		FY22	FY23
Environmental Quality Incentives Program (EQIP)	Financial Assistance Allocation	\$33.3 M	0 ^b
	Contracts	1073	0 ^b
Conservation Stewardship Program (CSP)	Financial Assistance Allocation	\$15.5 M	\$8,501,221 ^c
	New Contracts	273	0 ^c
	Renewal Contracts	217	291
Agricultural Conservation Easement Program—Agricultural Land Easements (ACEP—ALE) <small>*Includes RCPP ALE in brackets</small>	Financial Assistance Allocation	\$404,088	\$304,000
	Parcels	3	1
	Acres	260	288.5
Agricultural Conservation Easement Program—Wetland Reserve Easements (ACEP—WRE)	Financial Assistance Allocation	\$3.3 M	\$4.0 M
	Easements	5	
	Acres	478	
Emergency Watershed Protection Program—Floodplain Easements (EWPP-FPE)	Financial Assistance Reserve	\$3.4 M	0
	Proposed Easements	8	0
	Proposed Acres	556	0
Regional Conservation Partnership Program (RCPP)	Financial Assistance Allocation	\$3.0 M	0 ^b
	Contracts	110	0 ^b
	Acres	2,712	0 ^b

^aIncludes initiatives and special funding.
^bInitiatives and special funding allocations have not been determined yet.
^cFunding decisions not yet complete for the fiscal year.

USDA Invests Nearly \$4.7 Million in Wetland Mitigation Banks

The U.S. Department of Agriculture (USDA) has awarded nearly \$4.7 million in grant funding for the Wetland Mitigation Banking Program (WMBP), a grant program that supports the development of mitigation banks for the restoration, creation or enhancement of wetlands to compensate for unavoidable impacts to wetlands at another location.

The awarded funding adds to the more than \$17 million that has been provided to 16 partners in 11 states since 2016. This year's awards prioritized projects in states with significant wetland acreage as well as large numbers of producers with wetland determination requests. Wisconsin NRCS was awarded \$812,000. For more information visit: <https://www.nrcs.usda.gov/news/usda-invests-nearly-47-million-in-wetland-mitigation-banks>

USDA Announces February 10, 2023, Application Deadline for Conservation Stewardship Program

The next deadline for Conservation Stewardship Program (CSP) applications to be considered for funding this year is February 10, 2023. Through CSP, the U.S. Department of Agriculture's (USDA) Natural Resources Conservation Service (NRCS) helps farmers, ranchers and forest landowners earn payments for expanding conservation activities while maintaining agricultural production on their land. CSP also encourages adoption of new technologies and management techniques. For more information visit: <https://www.nrcs.usda.gov/conservation-basics/conservation-by-state/wisconsin/news/usda-announces-february-10-2023>

USDA Highlights New Project with Marbleseed in Wisconsin

The U.S. Department of Agriculture (USDA) is highlighting a new partnership with Marbleseed, part of a \$325 million investment in 71 projects under the second funding pool of the [Partnerships for Climate-Smart Commodities](#) effort. In total, the investment from both funding pools is over \$3.1 billion for 141 tentatively selected projects. Partnerships for Climate-Smart Commodities is working to expand markets for American producers who produce climate-smart commodities, leverage greenhouse gas benefits of climate-smart production, and provide meaningful benefits to producers, including small and underserved producers. For more information visit: <https://www.nrcs.usda.gov/conservation-basics/conservation-by-state/wisconsin/news/usda-highlights-new-project-with>

USDA Releases Nationwide Farmer, Rancher and Forest Manager Prospective Customer Survey

USDA encourages all agricultural producers to take the survey, especially those who have not worked with USDA previously. The survey gathers feedback on programs and services available through USDA's Farm Service Agency (FSA), Natural Resources Conservation Service (NRCS) and Risk Management Agency (RMA). The survey is available online at www.farmers.gov/survey

FY22 Wisconsin NRCS Conservation Highlights

In the FY22 Annual Report, you will see snapshots of our approach in getting conservation practices on the ground to use our land productively. You'll learn about conservation results and highlights of the work we do, which is strongly focused on meeting Farm Bill responsibilities. In the FY22 Success Story Highlights, you'll meet farmers and landowners from across the state who partner to implement conservation. These NRCS customers are investing in their operations and local communities to provide food, fiber and energy, creating a more sustainable future for all of us. Read the two products online at: <https://www.nrcs.usda.gov/wi/newsroom>

GovDelivery

Get the news first! Individuals can enroll in GovDelivery to receive up-to-date notifications by e-mail when new information becomes available about any state or national NRCS topic you choose. If you sign-up for these automatic updates, you will only receive notifications you specify and you may unsubscribe at any time. Sign up for Wisconsin updates by visiting: https://public.govdelivery.com/accounts/USDAFARMERS/subscriber/topics?qsp=USDAFARMERS_WI



Extension Update February 7, 2023

UW-Madison Division of Extension is a partner with DATCP and host farms in the Nitrogen Optimization Pilot Program. Extension has roles in guiding on-farm research protocols, assembling and summarizing data and developing and delivering education as a result of the on-farm projects. Our main points-of-contact are:

Monica Schauer, mschauer2@wisc.edu (works in UW-CALS Soils Science Department lab of Dr. Matt Ruark) is responsible for curating and communicating research protocols, coordinating data systems and analyzing/summarizing data.

Lindsey Rushford, lrushford@wisc.edu (works for Extension) is responsible for internal Extension coordination and for developing and delivering outreach resulting from pilot projects.

Finally, John Exo is retiring April 2nd and will be leaving the Land & Water Conservation Board.

Submitted by John Exo



DATCP REPORT
Bureau of Land and Water Resources
February 2023

Soil and Water Resources Management Grants

- Final reimbursements for 2022 are due February 15, 2023.
- The [2024 SWRM Application](#) is available on the webpage. This year, we have a small amount of federal funds to use to supplement Innovation Grant awards in the Mississippi River Basin focused on managing nutrient application and reducing runoff. These federal funds can support an intern or other project-level staffing needs to implement Innovation Awards within the Mississippi River Basin. If your county is not in the Mississippi River Basin you are still eligible for the state funded portion of the innovation funds but will not be eligible for the possible staffing support.

Nutrient Management News

- The 2024 Nutrient Management Farmer Education Grant Application will be available via the [NMFE Webpage](#) by the end of January. Applications will be Due April 15th, 2023. There will be a new option within the Tier 2 Grant for Nutrient Management Plan Implementation Reviews. More information regarding the new option will be found in the RFA.
- Upcoming Nutrient Management Trainings:
 - 2023 Online Nutrient Management Farmer Education Trainings- More information available here: [DATCP Home Nutrient Management Trainings \(wi.gov\)](#)
 - 2023 Nutrient Management Farmer Education for Pastures and Grazing-**February 14th from 9:30am-12:00pm**. Register here: <https://go.wisc.edu/775z71>
 - 2023 Nutrient Management Helpline-More information available here: [NPMHelpline.pdf \(wi.gov\)](#)
- If you haven't yet requested any Runoff Risk Advisory Forecast magnets or keychains, send a request to Andrea Topper (andrea.topper@wisconsin.gov) with the amount you'd like.

Conservation Engineering

- **Funding Opportunity:** DATCP will again be offering Engineering Reserve Funds in 2023. These funds are intended for engineered conservation projects that address a farm discharge(s) and need additional funding to get completed. Deadline for project consideration is **March 31st**. Details on the application process will be coming soon from your DATCP area engineering contacts.
- NRCS recently updated their website and as part of that process the location of design tools such as standard drawings, design spreadsheets and manuals/handbooks can now be found on the Field Office Technical Guide (FOTG) website linked [here](#). These tools are found in the navigation pane on the left side of the webpage under:
 - Section 1 – General Resource References => Engineering Resources

Livestock Facility Siting

- The Livestock Facility Siting Technical Expert Committee met January 27th to review the nutrient management standard in ATCP 51.16. The Committee will meet again in February to review the Waste Storage (ATCP 51.18) and Runoff Management Standards (ATCP 51.20). Interested parties are encouraged to subscribe to email updates for the Technical Expert Committee via [Gov Delivery](#).

Land and Water Conservation Board-LWRM Plans

- The Land and Water Conservation Board will meet virtually on Tuesday, February 7th. Dane County will present a 5-year review of its LWRM Plan.
- The Advisory Committee on Research (“Committee”) will next meet virtually on March 7th from 9 - 10am. Parties that wish to address the Committee at future meetings should contact Zach Zopp (zach.zopp@wisconsin.gov) in advance to schedule the appropriate agenda item.

Farmland Preservation Program and Agricultural Enterprise Areas (AEA)

- A new *Conservation Compliance for Farmland Preservation Program Participants* publication is ready and available [here](#). This publication can be a useful tool to help potential or existing participants or new county staff understand the compliance requirements for FPP. Direct questions regarding conservation compliance to Cody Calkins @ cody.calkins@wisconsin.gov.
- The new Farmland Preservation Agreement application and FAQ for Prospective Agreement Holders are available [here](#). All new applications should be submitted using this new form.
- Counties should submit updates to their DOR Spreadsheets for farmland preservation participants in Tax Year 2022 to DATCPWorkingLands@wisconsin.gov.
- The 2023 Petition cycle to designate new or modify existing AEAs is now open through July 28, 2023. Petition materials are available [here](#).
- Farmland Preservation Program staff will work with counties to craft outreach initiatives focused on areas of interest for renewable energy projects that are eligible for, or enrolled in, FP. Contact DATCPWorkingLands@wisconsin.gov to discuss needs or examples.

Conservation Reserve Enhancement Program (CREP)

- **CREP 101 Training (Virtual) Feb 8th 2023:** DATCP is offering a virtual CREP 101 training on **February 8th, 2023 from 9am – Noon**. The training is for all local office staff (LCD, FSA, NRCS). We invite LCD staff to contact their federal partners to attend with them. The training will review program requirements, landowner engagement, agency partnership coordination and administrative processes. All local agency partners are encouraged to attend including both new and seasoned local CREP staff. If interested RSVP via email to Brian Loeffelholz (Brian.Loeffelholz@wisconsin.gov).
- **Annual Summary Reports for Counties 2022:** DATCP emailed out the annual summary reports for counties on January 5, 2023. Please review the records for your county to ensure that the state CREP records match the county CREP records. Also please share these summaries with your local FSA office to compare enrollment numbers for the year. If you find a discrepancy or have questions please let DATCP CREP staff know.

Agricultural Impact Statement (AIS) Program

- The AIS program published AIS #4476 for a proposed utility operations center in the Town of Ripon in Fond du Lac County, WI. Access [AIS #4476](#) and [AIS #4476 Appendices](#) at the provided links or [visit agimpact.wi.gov](http://visit.agimpact.wi.gov) for more information.
- Curious about what the AIS program is and does? Check out the [Intro to the AIS program](#) video at agimpact.wi.gov. We’ve also launched a new [AIS Frequently Asked Questions](#) page that addresses many of your top AIS questions. Contact zach.zopp@wisconsin.gov for questions regarding any active AIS statement or the AIS program.

Producer-Led Watershed Protection Grant (PLWPG) Program

- Reimbursements are due February 15, 2022. Email to Susan.Mockert@wisconsin.gov.
- Annual Reports are due February 15, 2022. Email to Randy.Zogbaum@wisconsin.gov

County Annual Reports

- Counties received an email from the department at the end of December with a link to the annual report questions. The reports are due back by March 17. If you didn't receive the email, please email Coreen.Fallat@wisconsin.gov.

Personnel Updates

- Bureau of Land and Water Resources is currently recruiting for the Land Resources Management Section Manager position (previously held by Jenni Heaton-Amrhein). The bureau is hoping to have the position filled in March.

DATE: February 7, 2023

TO: LWCB members and advisors

FROM: Jill Schoen, DNR

SUBJECT: DNR Update, December 2022 - January 2023, for February 2023 LWCB meeting

Runoff Grants – TRM & UNPS Construction applications now available & Webinar registration

Targeted Runoff Management (TRM) grant applications for projects beginning in 2024 are now available on the Wisconsin Department of Natural Resources (DNR)'s [grant program webpage](#).

Urban Nonpoint Source & Storm Water (UNPS & SW) Planning Grant applications for projects beginning in 2024 are now available on the Wisconsin Department of Natural Resources (DNR)'s [grant program webpage](#).

Eligible applicants have until April 17, 2023 to submit applications.

The DNR and UW-Madison Division of Extension will host a Targeted Runoff Management **Application Webinar** from 9 - 10:30 a.m. on Feb. 14, 2023. Register in advance for the webinar [here](#). After registering, you will receive a confirmation email with meeting details.

The DNR and UW-Madison Division of Extension will host an Urban Nonpoint Source **Application Webinar** from 1 – 2:30 p.m. on Feb. 14, 2023. Register in advance for the webinar [here](#). After registering, you will receive a confirmation email with meeting details.

Storm Water Program Update

The storm water program has the opportunity to welcome two new staff into project positions to provide technical assistance for storm water infrastructure projects related to the Bipartisan Infrastructure Law (BIL). One position is an intake specialist for storm water permits and the other is a storm water specialist. The successful candidate for the intake position was Grace Mikelsons and the successful candidate for the specialist position was Matt Kaelin. Grace currently serves as an intake LTE working out of our Eau Claire office. Matt currently serves in two LTE roles for the department's watershed bureau working out of our Milwaukee office. Matt will be working with communities to identify potential storm water infrastructure projects and assist them with submitting application documents related to storm water permits, even if the project is not specifically a storm water project. Non-storm water infrastructure projects might include a new town hall, fire station, wastewater facility or addition or road reconstruction that disturbs greater than 1 acre. Grace will be taking in permits for municipal projects statewide and providing in the field assistance to communities. Special emphasis will be made to small, rural, and tribal communities (where the state has jurisdiction) as required by the BIL. Both Grace and Matt will continue to work in their current offices.

The non-metallic mining general permit became effective on January 1, 2023. The permit expired in July of 2021 and the department has been worked diligently to reissue the general permit in July of 2022 with the January 1st effective date. While the permit was expired, the department was able to cover new non-metallic mining facilities with a Tier 2 industrial permit and any wastewater discharges were covered through one of the wastewater program's general permits or in some cases an individual permit. This allowed new facilities to get up and running while the department worked through re-writing the permit.

The new non-metallic mining general permit covers discharges of both storm water and wastewater to surface water and ground water. The new permit has requirements for sampling for metals in a subset of wastewater discharges from facilities conducting specific activities at their facility. The permit also includes “off ramps” from sampling after a specified number of non-detect samples are collected.

As of January 1, 2023, new construction site storm water permits have an increased fee. The update to Wisconsin Administrative Code NR216 in 2021 included the increase to fees for construction site storm water permits. Fees had not been increased since 2003. Review of the storm water program’s three program areas (municipal, industrial and construction) found that the construction site fees disproportionately covered less costs than the other program areas. Fees collected covered 16% of the construction program’s costs, but municipal fees covered 48% and industrial fees covered 65% of the costs. The adopted fee will cover approximately 40% of the construction program costs. The new fee also charges individuals that have commenced work prior to obtaining permit coverage a double permit fee. The department anticipates generating an additional \$500,000 annually. The department plans to use the additional fees to continue to invest in resources that will allow the program to continue to deliver a high level of service to our customers.

Disturbed Acres	Proportion of Applications	Fee 2003-2021	2023 Fee
<2	23%	\$140	\$250
2-5	38%		\$350
5 - 25	32%	\$235	\$550
25-50	3%	\$350	\$800
>50	4%		

CAFO Program Update

County conservation departments play a crucial outreach role for farms thinking about expanding to permitting size. State law requires farms to apply for a CAFO WPDES permit at least 180 days prior to their intended expansion date. Permit coverage is needed to operate over 1,000 animal units (for example: 700 milking cows, 1,000 steers, 10,000 broilers, or 55,000 turkeys,). Conservation departments or farms with questions about permitting can contact the appropriate DNR staff member [here](#).

Planning is underway for the February 2023 CAFO Workshops. They will be held in Fond du Lac, Green Bay, Darlington, Jefferson, Stratford, and Menominee. Click on this link to register: <https://conservationprotraining.org/2023-cafo-update-series/>.

Northeast Lakeshore Surface Water Nitrogen Study

The DNR Water Evaluation section recently completed a study to evaluate nitrogen in surface waters in the Northeast Lakeshore region of the state. The study area encompasses portions of Ozaukee, Sheboygan, Fond du Lac, Calumet, Manitowoc, Brown, Kewaunee, and Door Counties. The study explored the long-term trends of nitrogen in surface waters, the results of short-term monitoring, the balance of nitrogen inputs and outputs on the landscape, the contribution of baseflow to surface water nitrates, the spatial distribution of groundwater nitrates, and a series of statistical analyses to estimate nitrogen in surface waters.

The study resulted in many useful conclusions about nitrogen in surface waters in the study area. First, surface water nitrate concentrations in the study area are higher than concentrations in most other parts of the state. Second, the elevated nitrogen concentrations may be impacting the health of streams in the study area. Third, more nitrogen is being applied to the landscape than is being removed through crops and other processes. The results of the study can be used during implementation planning to prioritize where nonpoint activities should occur.

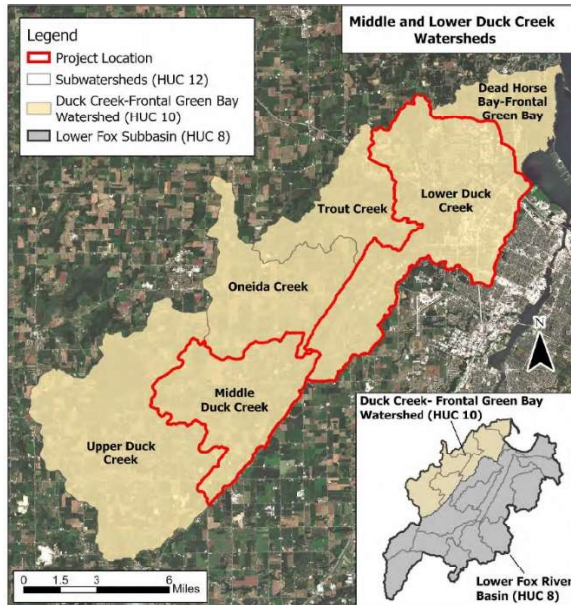
A final draft of the nitrogen study has been posted to the Northeast Lakeshore TMDL website. Additionally, the DNR hosted an external webinar on November 9, 2022 to discuss the findings of the nitrogen study. Input on the report and the webinar is being accepted through January 13, 2023.

<https://dnr.wisconsin.gov/topic/TMDLs/NElakeshore.html>

9KE Plan Update

DNR and EPA approved the Middle-Lower Duck Watershed Based Plan on Nov 23, 2022.

This plan covers two HUC 12 watersheds within Outagamie and Brown Counties – and is located within the Lower Fox TMDL HUC 8 project area. Upper Duck Creek HUC 12 also has an approved watershed-based plan (2016). The plan was recently posted to the 9E Plan webpage (NKE 130) - [Plan map | Nine Key Element Watershed Plans | Wisconsin DNR](#)



Surface Water Grant Program Update

The DNR Surface Water Grant Program is currently working to finalize the funding list for this year's surface water grant recipients. Overall, the program received \$7.8M in requests across the various surface water grant programs resulting in the program being oversubscribed 23%. The rivers category received \$496k in requests, with the category 171% oversubscribed; the lakes category received \$3M in requests, with the category 152% oversubscribed; the AIS category received \$4.3M in requests, with the category 109% oversubscribed.

Grant awards will be announced on February 1st, with the priority funding list posted to the [Wisconsin DNR's Surface Water Grant website](#).