



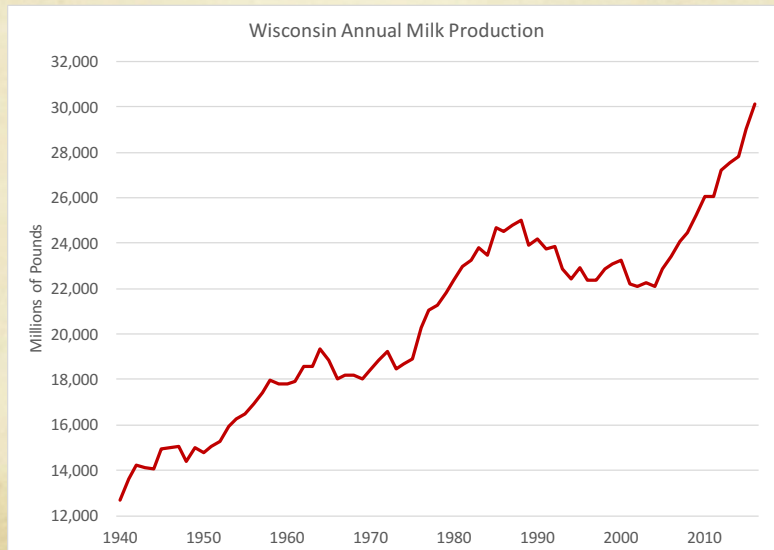
## A Few Macro Trends

### *Wisconsin Dairy Task Force 2.0*

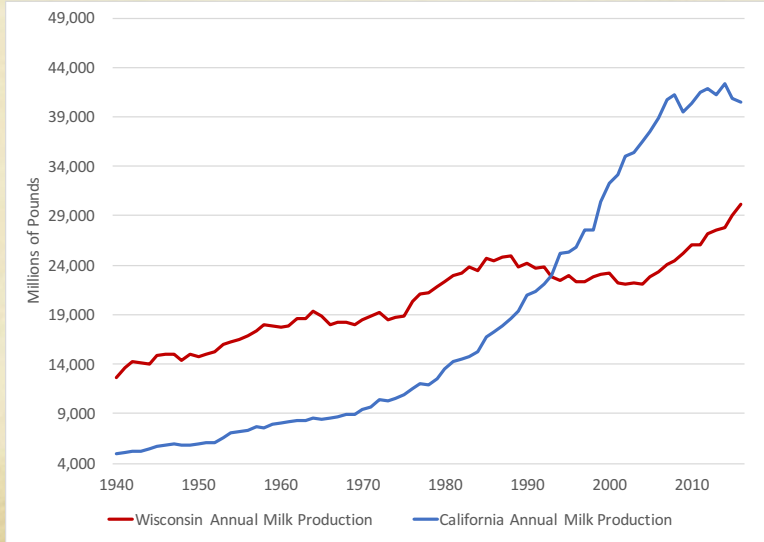
Mark Stephenson  
*Director of Dairy Policy Analysis*



## Let's remember when...



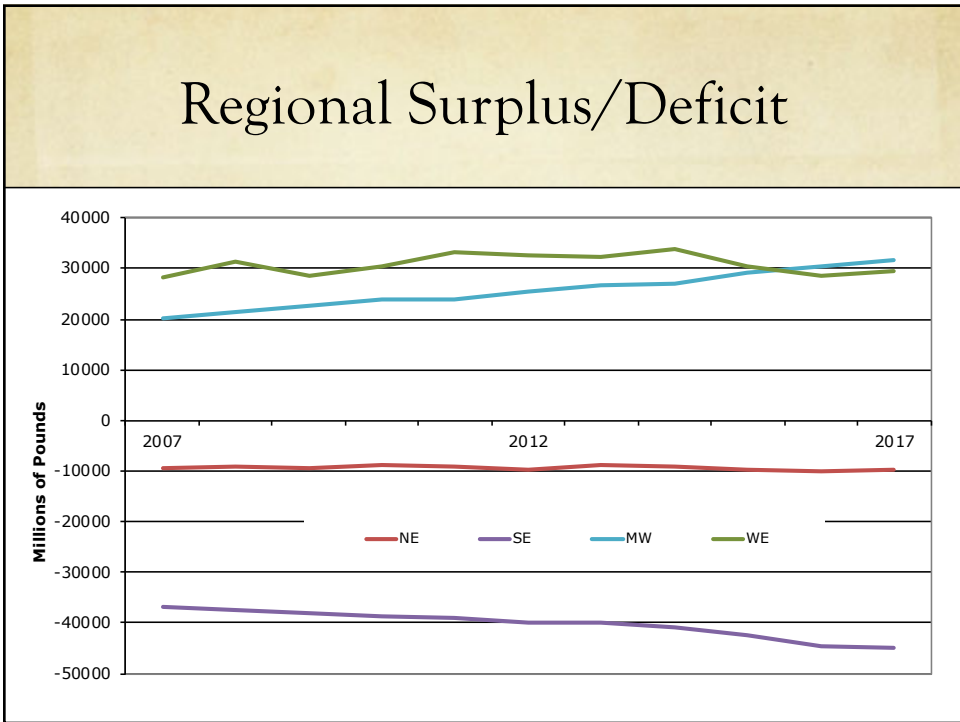
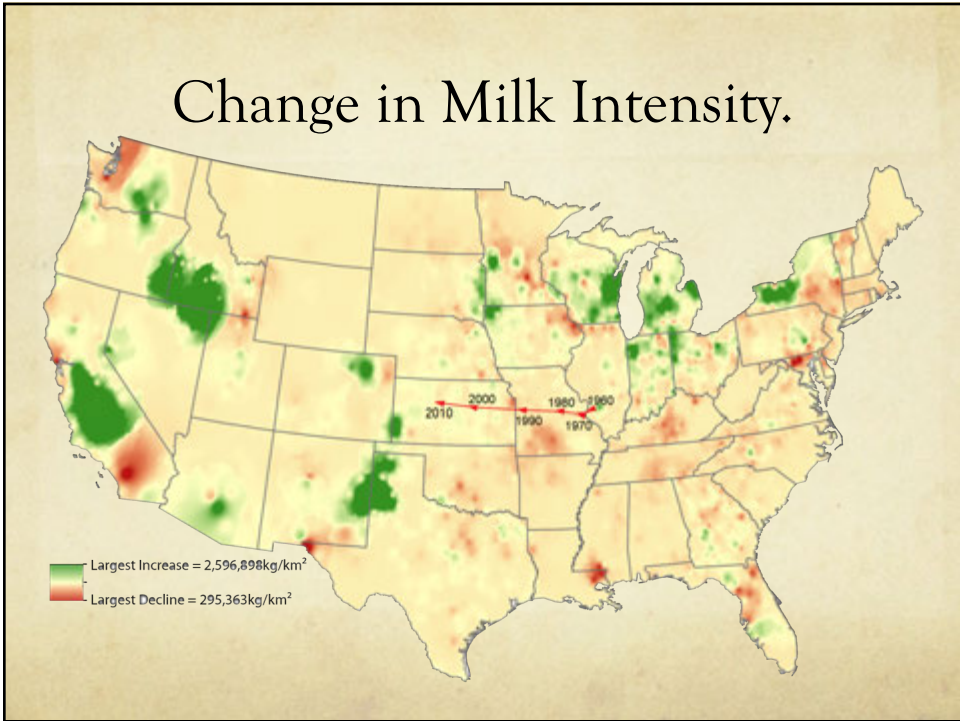
## California happened!



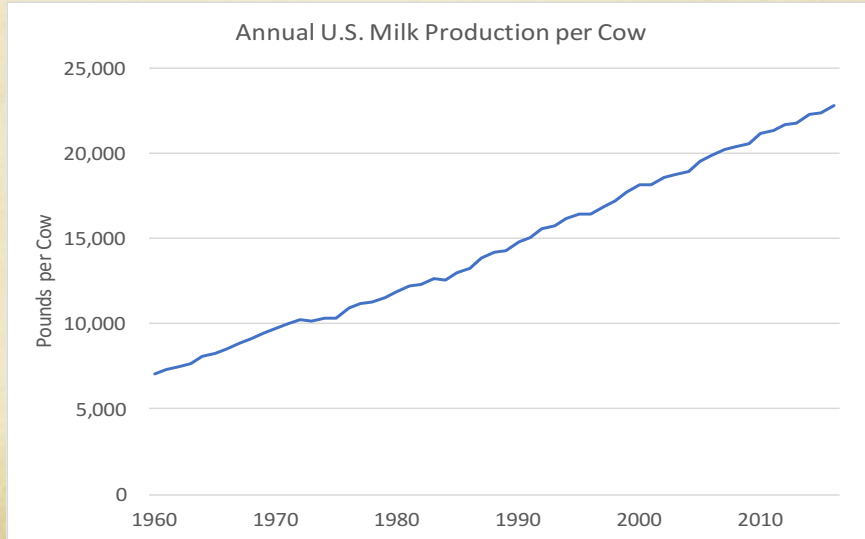
## Where is the milk?



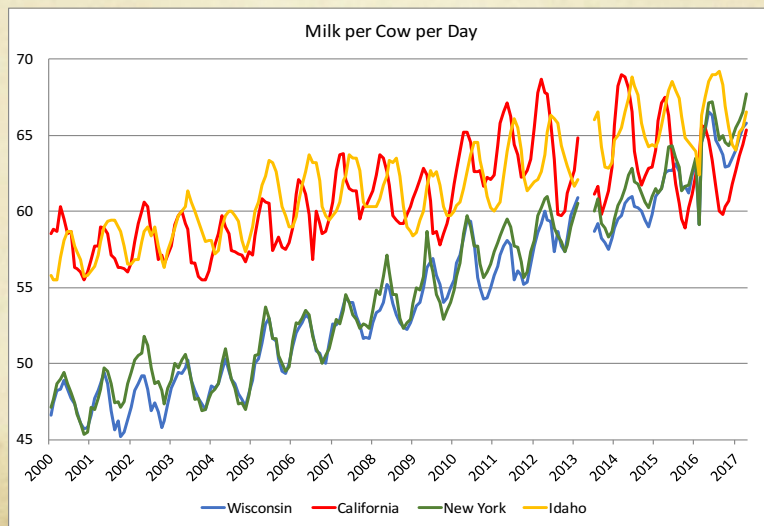




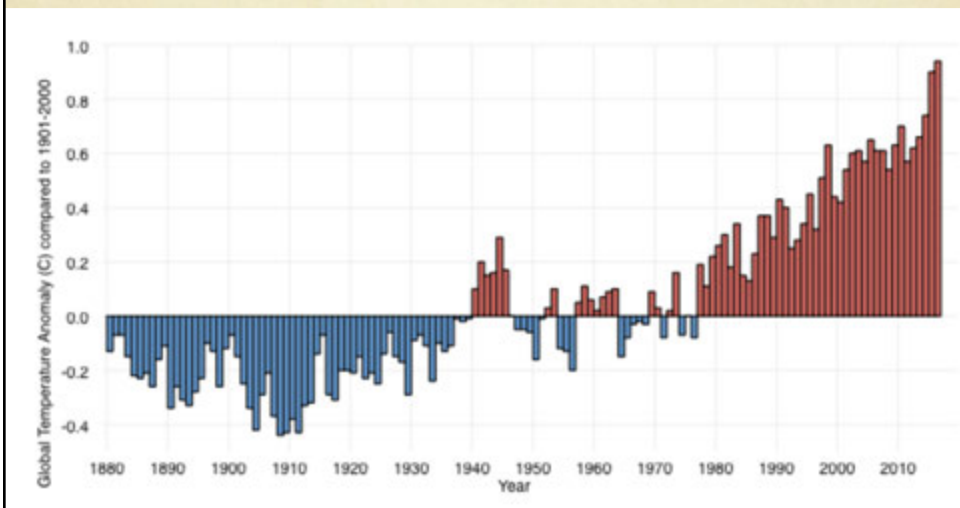
## Improved efficiency



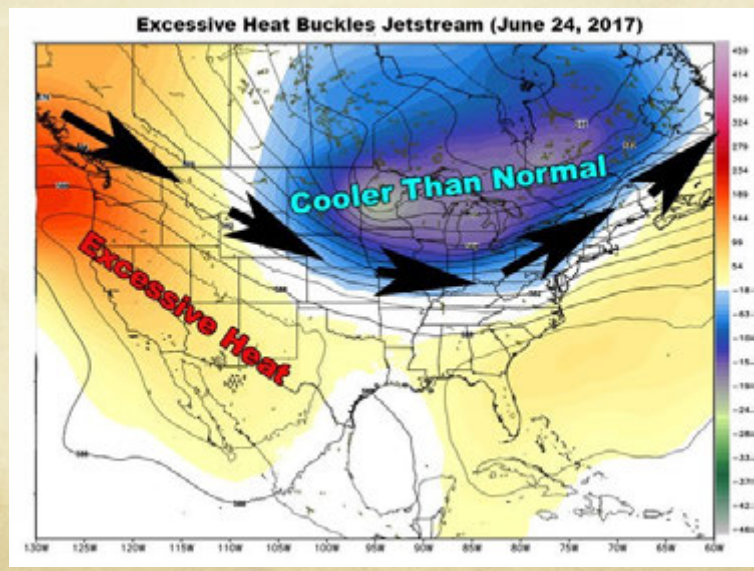
## Consider trends in top four states



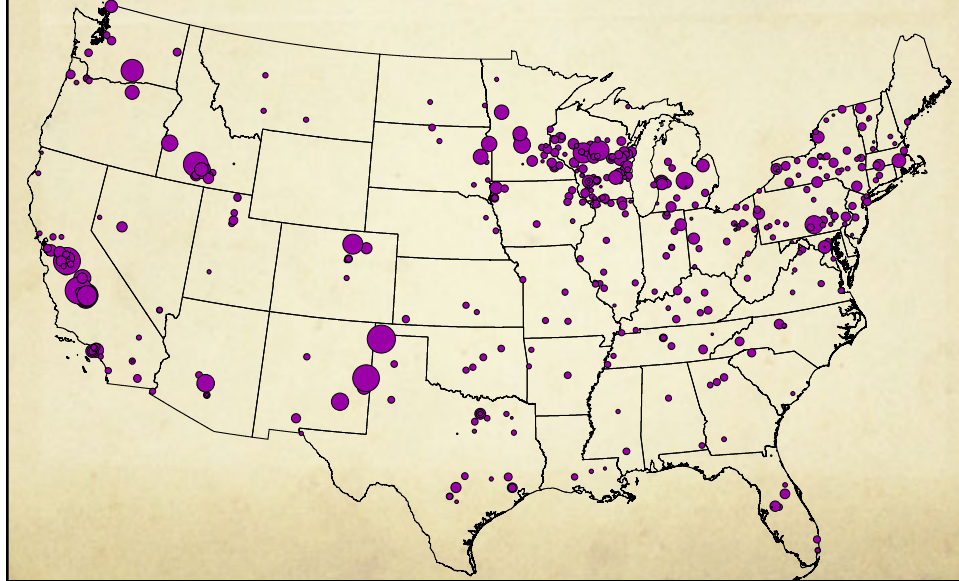
# History of Global Surface Temperature Since 1880



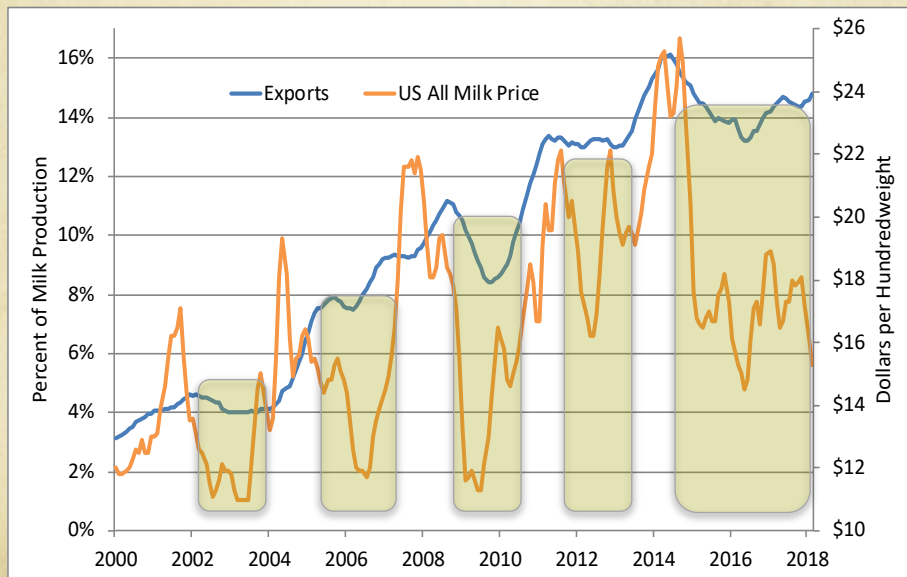
# Temperature Extremes



## Location & Volume of Dairy Plants



## The Importance of Trade



## A Few Macro Trends

- Climate change is bumping up against productivity trends
- A lot of growth in Midwest milk production
- Plant capacity may be a factor in some areas
- Bigger issue may be customer base
- Midwest may have to pursue more export customers