

**January 30, 2025**

**Board Meeting**

- **Milk Production**

- In November, WI milk production totaled 2.58 billion pounds. This was down slightly from the previous November.
- Milk production in the 24 major states totaled 17.2 billion pounds. This is down 0.8 percent from the previous year.
- As of January 1, 2025, WI had 5,348 milk cow herds. This is down 313 herds from January 2024.

- **November Prices Received**

- Milk price for November was \$22.90 per cwt. This was \$2.70 higher than last November's price. The US price for November was \$24.20.
- The November price for corn was \$3.90 per bushel. This was 50 cents below last November.
- The November price for soybeans was \$9.73 per bushel. This was \$3.07 below November 2023.
- The November price for alfalfa hay was \$157 per ton down \$39 per ton from last November.

- **Highlights from the 2024 Final Crop Production Report**

- **Corn for grain** – Total production is estimated at 515 million bushels. This is down 7 percent from 2023. Wisconsin's corn for grain yield is estimated at 174 bushels per acre. The average yield in 2024 for the United States is estimated at 179.3 bushels per acre.
- **Soybeans** – Total production is estimated 102 million bushels. This is down 3 percent from 2023. Wisconsin soybean growers averaged 48 bushels per acre which is down 3 bushels per acre from 2023. The average yield in 2024 for the United States is estimated at 50.7 bushels per acre.
- **Alfalfa and alfalfa mixtures for dry hay** – 2024 production in Wisconsin is estimated at 3.03 million tons, up 75 percent from 2023. Producers averaged 3.65 tons per acre.

- **Potatoes** – Production is estimated at 26.1 million cwt, down 8 percent from 2023. Yield is estimated at 395 cwt, down 6 percent from the 2023 yield.
- **Storage Capacity**
  - Wisconsin on-farm storage capacity on December 1, 2024, was 380 million bushels which is the same as December 1, 2023.
  - Wisconsin’s 300 off-farm storage facilities have a storage capacity of 405 million bushels, which the same as the previous year.
- **Chickens & Eggs**
  - Wisconsin egg production during November 2024 was 207 million eggs, up 2 percent from last year.
  - The average number of all layers on hand during November 2024 was 7.95 million, down slightly from last year.
- **Other noteworthy items:**
  - Beginning in February, NASS will be contacting farms for the Agricultural Resource Management Survey (ARMS). This is USDA’s primary source of information on agricultural resource use, costs, and farm sector financial conditions.



# Wisconsin Ag News – Chickens & Eggs

Upper Midwest Regional Field Office · 210 Walnut St, Ste 833 · Des Moines, IA 50309 · (608) 287-4775  
fax (855) 271-9802 · www.nass.usda.gov/wi

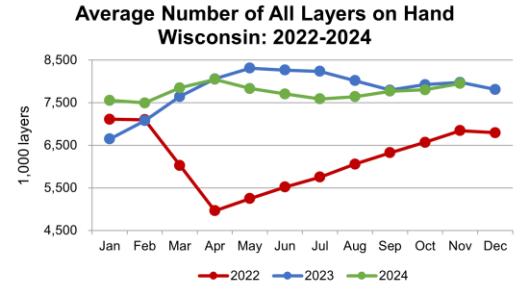
Cooperating with Wisconsin Department of Agriculture, Trade and Consumer Protection

December 20, 2024 - For Immediate Release

Media Contact: Greg Bussler

Wisconsin **egg production** during November 2024 was 207 million eggs, up 2 percent from the previous November, according to the latest *Chickens and Eggs* report from the USDA's National Agricultural Statistics Service.

The average number of **all layers on hand** during November 2024 was 7.95 million, down slightly from last year. **Eggs per 100 layers** for November was 2,598, up 2 percent from a year ago.



## Layers on Hand and Eggs Produced – States and United States: During November 2023 and 2024

[Data may not add to totals due to rounding. Data by type of flock not shown for some states to avoid disclosing individual operations, data included in United States totals.]

State	Table egg layers in flocks 30,000 & above		All layers on hand		Eggs per 100 layers		Total egg production		Table egg production	
	2023	2024	2023	2024	2023	2024	2023	2024	2023	2024
	(1,000 layers)	(1,000 layers)	(1,000 layers)	(1,000 layers)	(eggs)	(eggs)	(million eggs)	(million eggs)	(million eggs)	(million eggs)
Alabama .....	1,367	1,318	11,503	10,479	1,834	1,868	211.0	195.8	36.6	33.0
Arkansas .....	(D)	(D)	15,006	15,562	2,140	2,041	321.2	317.6	(D)	(D)
California .....	10,675	6,862	11,039	7,253	2,305	2,307	254.4	167.3	(D)	(D)
Colorado .....	3,910	1,405	4,398	1,893	2,619	2,335	115.2	44.2	(D)	(D)
Georgia .....	9,552	9,757	19,983	19,451	2,179	2,209	435.4	429.6	243.4	245.2
Illinois .....	6,319	5,523	6,870	6,142	2,214	2,439	152.1	149.8	148.3	144.5
Indiana .....	34,573	36,771	35,605	37,740	2,430	2,394	865.3	903.5	850.9	889.9
Iowa .....	42,601	44,127	44,418	45,976	2,530	2,485	1,123.7	1,142.6	1,100.1	1,120.0
Kentucky .....	(D)	(D)	5,458	5,504	2,122	2,153	115.8	118.5	(D)	(D)
Maryland .....	2,138	2,222	2,348	2,435	2,560	2,595	60.1	63.2	58.7	61.6
Michigan .....	16,369	10,800	16,654	11,376	2,412	2,371	401.7	269.7	(D)	(D)
Minnesota .....	6,989	6,217	7,453	6,703	2,457	2,477	183.1	166.0	175.7	158.9
Mississippi .....	(D)	(D)	5,734	5,582	2,133	2,078	122.3	116.0	(D)	(D)
Missouri .....	7,247	7,551	13,751	13,784	2,550	2,501	350.6	344.8	310.3	308.0
Nebraska .....	7,551	7,809	8,152	8,448	2,521	2,461	205.5	207.9	194.1	194.8
New York .....	5,147	5,359	5,726	5,857	2,492	2,479	142.7	145.2	(D)	(D)
North Carolina .....	7,412	7,697	16,170	16,156	2,150	2,246	347.6	362.8	183.7	202.7
Ohio .....	40,387	42,092	41,592	43,305	2,492	2,521	1,036.5	1,091.8	(D)	(D)
Oklahoma .....	(D)	(D)	2,249	2,329	2,010	2,151	45.2	50.1	(D)	(D)
Oregon .....	2,370	2,334	2,480	2,444	2,423	2,492	60.1	60.9	60.1	60.9
Pennsylvania .....	24,886	23,990	27,919	27,272	2,472	2,521	690.1	687.5	647.5	641.8
South Carolina .....	2,254	2,621	3,551	3,911	2,261	2,212	80.3	86.5	57.6	64.0
South Dakota .....	1,957	1,977	2,012	2,032	2,679	2,510	53.9	51.0	53.9	51.0
Texas .....	(D)	(D)	22,794	21,903	2,391	2,241	545.1	490.9	(D)	(D)
Utah .....	6,440	6,205	6,480	6,245	2,610	2,455	169.1	153.3	169.1	153.3
Virginia .....	914	941	2,654	2,580	2,359	2,264	62.6	58.4	32.9	31.8
Washington .....	5,445	5,039	5,609	5,141	2,566	2,393	143.9	123.0	(D)	(D)
<b>Wisconsin .....</b>	<b>6,915</b>	<b>6,795</b>	<b>7,976</b>	<b>7,949</b>	<b>2,538</b>	<b>2,598</b>	<b>202.4</b>	<b>206.5</b>	<b>197.2</b>	<b>200.9</b>
Other States <sup>1</sup> .....	25,672	24,396	31,933	30,300	2,360	2,360	753.6	715.1	678.4	637.5
United States .....	305,476	295,566	387,517	375,752	2,387	2,374	9,250.5	8,919.5	7,992.1	7,678.3

(D) Withheld to avoid disclosing data for individual operations.  
<sup>1</sup> Includes data for states not published in this table.

This will be the last monthly state-level publication for Chickens and Eggs. All data collected for Wisconsin will be published in the national release which you can find and subscribe to [here](#).

## United States Chickens & Eggs

United States egg production totaled 8.92 billion during November 2024, down 4 percent from last year. Production included 7.68 billion table eggs, and 1.24 billion hatching eggs, of which 1.15 billion were broiler-type and 90.3 million were egg-type. The average number of layers during November 2024 totaled 376 million, down 3 percent from last year. November egg production per 100 layers was 2,374 eggs, down 1 percent from November 2023.

Total layers in the United States on December 1, 2024 totaled 375 million, down 3 percent from last year. The 375 million layers consisted of 311 million layers producing table or market type eggs, 60.7 million layers producing broiler-type hatching eggs, and 3.78 million layers producing egg-type hatching eggs. Rate of lay per day on December 1, 2024, averaged 79.0 eggs per 100 layers, down 1 percent from December 1, 2023.

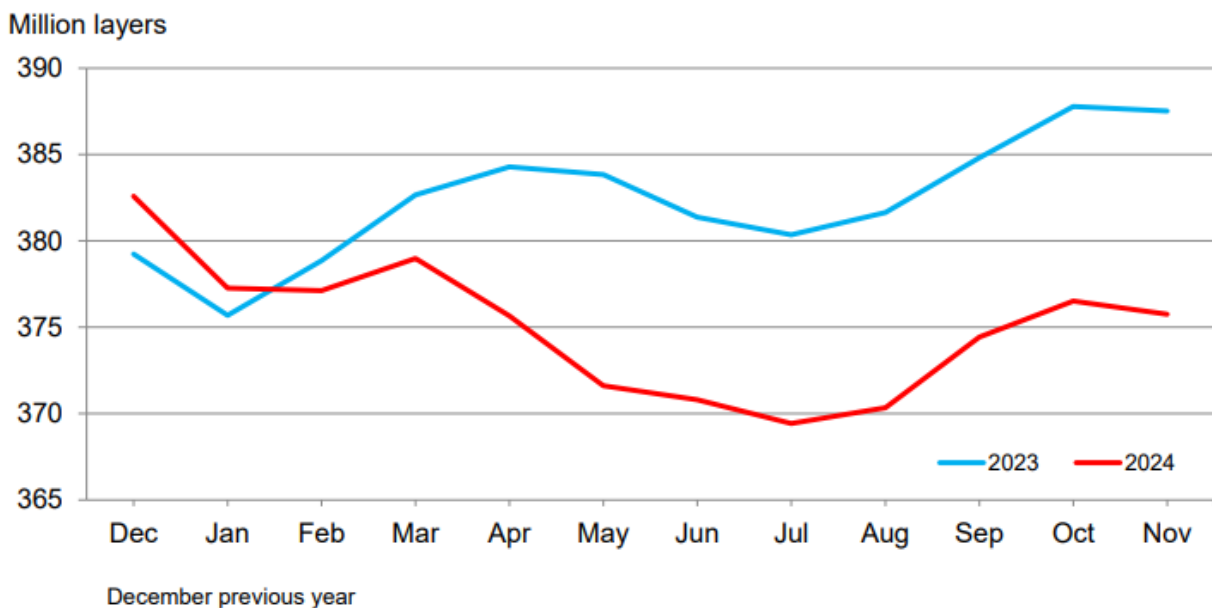
Egg-type chicks hatched during November 2024 totaled 48.8 million, up 1 percent from November 2023. Eggs in incubators totaled 50.1 million on December 1, 2024, down slightly from a year ago.

Domestic placements of egg-type pullet chicks for future hatchery supply flocks by leading breeders totaled 191 thousand during November 2024, down 4 percent from November 2023.

Broiler-type chicks hatched during November 2024 totaled 821 million, up 4 percent from November 2023. Eggs in incubators totaled 746 million on December 1, 2024, up 4 percent from a year ago.

The complete report can be found on the USDA NASS website at [www.nass.usda.gov/Publications](http://www.nass.usda.gov/Publications).

### Average Layers During the Month – United States





# Wisconsin Ag News – Crop Production

Upper Midwest Regional Field Office · 210 Walnut St, Ste 833 · Des Moines, IA 50309 · (608) 287-4775  
fax (855) 271-9802 · [www.nass.usda.gov/wi](http://www.nass.usda.gov/wi)

Cooperating with Wisconsin Department of Agriculture, Trade and Consumer Protection

January 10, 2025 - For Immediate Release

Media Contact: Greg Bussler

**Corn for grain** production in Wisconsin for 2024 was estimated at 515 million bushels, according to the USDA, National Agricultural Statistics Service – *Crop Production 2024 Summary*. Current year production was down 7 percent from the previous year's 553 million bushels. Wisconsin's corn for grain yield was estimated at 174.0 bushels per acre. Area harvested for grain was estimated at 2.96 million acres, 180,000 acres below 2023. Corn planted for all purposes in 2024 was estimated at 3.75 million acres.

**Corn for silage** production was estimated at 14.6 million tons, down 11 percent from 2023. The silage yield estimate of 20.0 tons per acre was down 1.0 tons per acre from 2023. Producers harvested 730,000 acres of corn for silage, down 6 percent from 2023.

**Soybean** production was estimated at 102 million bushels in 2024. This was down 3 percent from last year's 105 million bushels. The Wisconsin soybean crop yielded 48.0 bushels per acre in 2024. The harvested acreage of 2.12 million was up 60,000 acres from 2023. Soybean planted acreage, at 2.15 million, was up 40,000 acres from 2023.

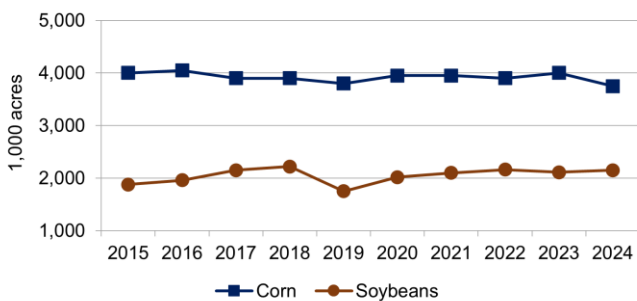
**All hay** production for the state was estimated at 3.90 million tons, up 75 percent from the 2.24 million tons produced in 2023. Producers averaged 3.03 tons per acre, up 0.86 tons per acre from 2023. All hay harvested acres were estimated at 1.29 million acres, up 260,000 acres from 2023.

**Alfalfa and alfalfa mixtures for hay** production was estimated at 3.03 million tons, up 75 percent from 2023. Producers averaged 3.65 tons per acre, up 0.95 tons per acre from 2023. Harvested acres were up 190,000 from last year, to 830,000 acres. Wisconsin producers seeded 240,000 acres of alfalfa and alfalfa mixtures in 2024, up 14 percent from 2023.

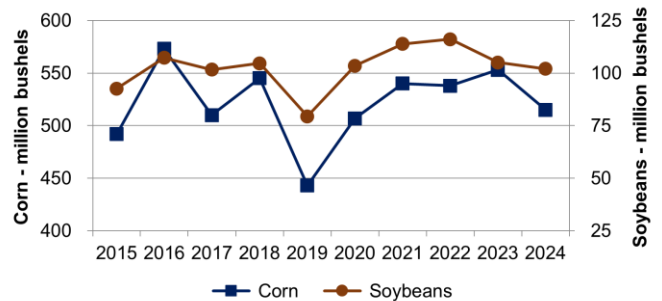
**Other hay** production was estimated at 874,000 tons, up 72 percent from 2023. Producers averaged 1.90 tons per acre, up 0.60 tons from the 2023 yield. Harvested acres of other hay, at 460,000, were up 70,000 acres from 2023.

**Potato** production for 2024 was estimated at 26.1 million cwt, down 8 percent from 2023. Producers averaged 395 cwt per acre, down 6 percent from the 2023 yield. Planted and harvested acres were estimated at 67,000 acres and 66,000 acres, respectively.

**Corn and Soybean Planted Acreage  
Wisconsin: 2015-2024**



**Corn and Soybean Production  
Wisconsin: 2015-2024**



## Crop Production Summary – Wisconsin and United States: 2023-2024

Crop	Area planted		Area harvested		Yield per acre		Production	
	2023	2024	2023	2024	2023	2024	2023	2024
	(1,000 acres)	(1,000 acres)	(1,000 acres)	(1,000 acres)			(1,000)	(1,000)
<b>WISCONSIN</b>								
Corn for grain <sup>1</sup> .....bushels	4,000	3,750	3,140	2,960	176.0	174.0	552,640	515,040
Corn for silage ..... tons	(NA)	(NA)	780	730	21.0	20.0	16,380	14,600
Hay, all ..... tons	(NA)	(NA)	1,030	1,290	2.17	3.03	2,235	3,904
Hay, alfalfa ..... tons	(NA)	(NA)	640	830	2.70	3.65	1,728	3,030
Hay, other ..... tons	(NA)	(NA)	390	460	1.30	1.90	507	874
Oats .....bushels	135	140	75	64	61.0	67.0	4,575	4,288
Potatoes ..... cwt	68.0	67.0	67.5	66.0	420	395	28,350	26,070
Rye <sup>2</sup> .....bushels	240	260	15	30	41.0	39.0	615	1,170
Soybeans .....bushels	2,110	2,150	2,060	2,120	51.0	48.0	105,060	101,760
Wheat, winter .....bushels	280	265	230	220	76.0	82.0	17,480	18,040
<b>UNITED STATES</b>								
Corn for grain <sup>1</sup> .....bushels	94,641	90,594	86,506	82,896	177.3	179.3	15,340,520	14,866,744
Corn for silage ..... tons	(NA)	(NA)	6,461	6,100	20.1	20.2	129,854	123,093
Hay, all ..... tons	(NA)	(NA)	52,771	49,390	2.25	2.48	118,588	122,462
Hay, alfalfa ..... tons	(NA)	(NA)	15,604	14,612	3.19	3.41	49,769	49,840
Hay, other ..... tons	(NA)	(NA)	37,167	34,778	1.85	2.09	68,819	72,622
Oats .....bushels	2,555	2,213	831	886	68.6	76.5	57,045	67,793
Potatoes ..... cwt	966.0	930.0	961.1	925.4	458	454	440,132	420,242
Rye <sup>2</sup> .....bushels	2,293	2,206	322	402	32.2	36.6	10,375	14,729
Soybeans .....bushels	83,600	87,050	82,271	86,050	50.6	50.7	4,162,057	4,366,492
Wheat, winter .....bushels	36,699	33,390	24,558	26,103	50.6	51.7	1,242,368	1,348,930

(NA) Not available.

<sup>1</sup> Area planted for all purposes.

<sup>2</sup> Includes area planted in preceding fall.

### U.S. Corn Supply and Use <sup>1</sup>

CORN	2022-2023	2023-2024 (Est.)	2024-2025 Projections January
	(million bushels)	(million bushels)	(million bushels)
Beginning stocks .....	1,377	1,360	1,763
Production .....	13,651	15,341	14,867
Imports .....	39	28	25
Supply, total .....	15,066	16,729	16,655
Feed & residual .....	5,486	5,804	5,775
Food, seed & industrial ..	6,558	6,869	6,890
Ethanol & by-products ...	5,176	5,478	5,500
Domestic, total .....	12,044	12,673	12,665
Exports .....	1,662	2,292	2,450
Use, total .....	13,706	14,966	15,115
Ending stocks .....	1,360	1,763	1,540
Avg. farm price (\$/bu) ....	6.54	4.55	4.25

<sup>1</sup> Source: USDA OCE World Agricultural Supply and Demand Estimates Report  
<http://www.usda.gov/oce/commodity/wasde/index.htm>

### U.S. Soybean Supply and Use <sup>1</sup>

SOYBEANS	2022-2023	2023-2024 (Est.)	2024-2025 Projections January
	(million bushels)	(million bushels)	(million bushels)
Beginning stocks .....	274	264	342
Production .....	4,270	4,162	4,366
Imports .....	25	21	20
Supply, total .....	4,569	4,447	4,729
Crushings .....	2,212	2,287	2,410
Exports .....	1,980	1,695	1,825
Seed .....	75	78	78
Residual .....	39	45	36
Use, total .....	4,305	4,105	4,349
Ending stocks .....	264	342	380
Avg. farm price (\$/bu) ...	14.20	12.40	10.20

<sup>1</sup> Source: USDA OCE World Agricultural Supply and Demand Estimates Report  
<http://www.usda.gov/oce/commodity/wasde/index.htm>

## United States Crop Production

Corn for grain production in 2024 was estimated at 14.9 billion bushels, down 3 percent from the 2023 estimate. The average yield in the United States was estimated at a record high 179.3 bushels per acre, 2.0 bushels above the 2023 yield of 177.3 bushels per acre. Area harvested for grain was estimated at 82.9 million acres, down 4 percent from the 2023 estimate.

Soybean production in 2024 totaled 4.37 billion bushels, up 5 percent from 2023. The average yield per acre was estimated at 50.7 bushels, up 0.1 bushel from 2023. Harvested area, at 86.1 million acres, was up 5 percent from last year.

The complete report can be found on the USDA NASS website at [www.nass.usda.gov/Publications](http://www.nass.usda.gov/Publications).



# Wisconsin Ag News – Milk Production

Upper Midwest Regional Field Office · 210 Walnut St, Ste 833 · Des Moines, IA 50309 · (608) 287-4775  
fax (855) 271-9802 · www.nass.usda.gov/wi

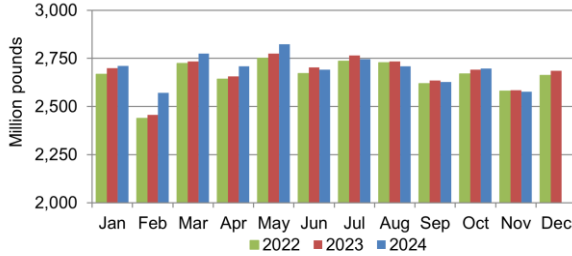
Cooperating with Wisconsin Department of Agriculture, Trade and Consumer Protection

December 19, 2024 - For Immediate Release

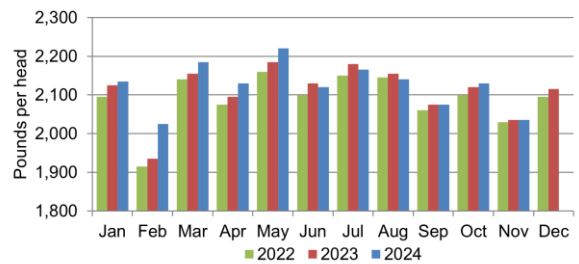
Media Contact: Greg Bussler

**Milk production** in Wisconsin during November 2024 totaled 2.58 billion pounds, down slightly from the previous November according to the latest USDA, National Agricultural Statistics Service – *Milk Production* report. The average number of milk cows during November, at 1.27 million head, was unchanged from last month but down 4,000 from November 2023. Monthly production per cow averaged 2,035 pounds, unchanged from last November.

**Milk Production  
Wisconsin: 2022-2024**



**Milk Production per Cow  
Wisconsin: 2022-2024**



**Milk Cows and Production – Selected States: November 2023 and 2024**

State	Milk Cows <sup>1</sup>		Milk Per Cow <sup>2</sup>		Milk Production <sup>2</sup>		Change from 2023
	2023	2024	2023	2024	2023	2024	
	(1,000 Head)	(1,000 Head)	(Pounds)	(Pounds)	(Million Pounds)	(Million Pounds)	(Percent)
Arizona .....	199	191	1,960	1,960	390	374	-4.1
California .....	1,710	1,709	1,905	1,730	3,258	2,957	-9.2
Colorado .....	197	206	2,105	2,110	415	435	4.8
Florida .....	98	98	1,630	1,595	160	156	-2.5
Georgia .....	90	85	1,745	1,880	157	160	1.9
Idaho .....	663	674	1,995	2,005	1,323	1,351	2.1
Illinois .....	79	77	1,720	1,740	136	134	-1.5
Indiana .....	190	190	1,915	1,930	364	367	0.8
Iowa .....	239	245	1,990	2,010	476	492	3.4
Kansas .....	176	181	1,945	1,940	342	351	2.6
Michigan .....	439	439	2,210	2,220	970	975	0.5
Minnesota .....	449	442	1,855	1,885	833	833	0.0
New Mexico .....	255	240	1,950	1,960	497	470	-5.4
New York .....	630	630	2,040	2,065	1,285	1,301	1.2
Ohio .....	255	251	1,800	1,830	459	459	0.0
Oregon .....	120	117	1,675	1,690	201	198	-1.5
Pennsylvania .....	466	465	1,680	1,700	783	791	1.0
South Dakota .....	202	215	1,860	1,875	376	403	7.2
Texas .....	635	675	2,090	2,110	1,327	1,424	7.3
Utah .....	88	90	1,875	1,870	165	168	1.8
Vermont .....	116	113	1,735	1,760	201	199	-1.0
Virginia .....	68	66	1,670	1,690	114	112	-1.8
Washington .....	257	258	1,925	1,900	495	490	-1.0
<b>Wisconsin .....</b>	<b>1,270</b>	<b>1,266</b>	<b>2,035</b>	<b>2,035</b>	<b>2,584</b>	<b>2,576</b>	<b>-0.3</b>
<b>24-State Total .....</b>	<b>8,891</b>	<b>8,923</b>	<b>1,947</b>	<b>1,925</b>	<b>17,311</b>	<b>17,176</b>	<b>-0.8</b>

<sup>1</sup> Includes dry cows, excludes heifers not yet fresh.  
<sup>2</sup> Excludes milk sucked by calves.

# United States Milk Production

Milk production in the 24 major States during November totaled 17.2 billion pounds, down 0.8 percent from November 2023. October revised production, at 18.0 billion pounds, was up 0.6 percent from October 2023. The October revision represented an increase of 32 million pounds or 0.2 percent from last month's preliminary production estimate.

Production per cow in the 24 major States averaged 1,925 pounds for November, 22 pounds below November 2023.

The number of milk cows on farms in the 24 major States was 8.92 million head, 32,000 head more than November 2023, but 2,000 head less than October 2024.

Milk production in the United States during November totaled 17.9 billion pounds, down 1.0 percent from November 2023.

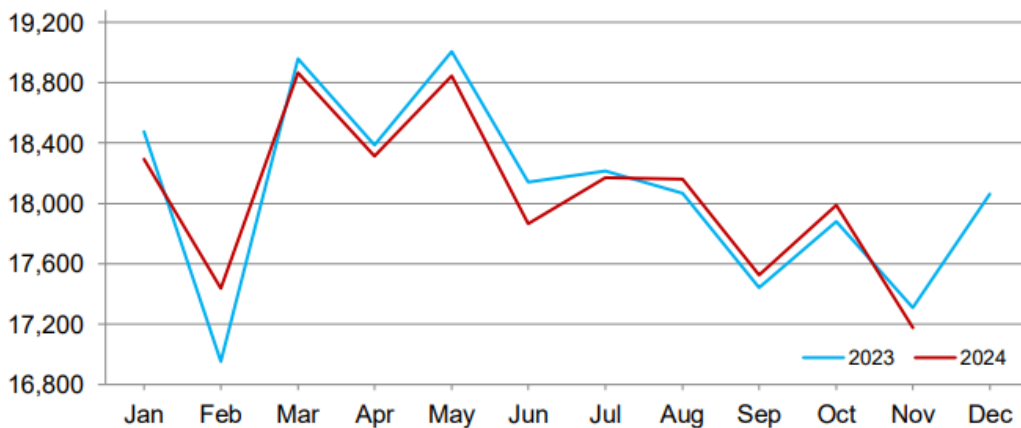
Production per cow in the United States averaged 1,909 pounds for November, 23 pounds below November 2023.

The number of milk cows on farms in the United States was 9.37 million head, 20,000 head more than November 2023, but 5,000 head less than October 2024.

The complete report can be found on the USDA NASS website at [www.nass.usda.gov/Publications](http://www.nass.usda.gov/Publications).

## Monthly Milk Production - 24 Selected States

Million pounds







# Wisconsin Ag News – Monthly Prices

Upper Midwest Regional Field Office · 210 Walnut St, Ste 833 · Des Moines, IA 50309 · (608) 287-4775  
fax (855) 271-9802 · [www.nass.usda.gov/wi](http://www.nass.usda.gov/wi)

Cooperating with Wisconsin Department of Agriculture, Trade and Consumer Protection

December 31, 2024 - For Immediate Release

Media Contact: Greg Bussler

The average price received by farmers for **corn** during November 2024 in Wisconsin was \$3.90 per bushel according to the latest USDA, National Agricultural Statistics Service – *Agricultural Prices* report. This was 2 cents above the October price but 50 cents below November 2023.

The November 2024 average price received by farmers for **soybeans**, at \$9.73 per bushel, was 17 cents below the October price and \$3.07 below the November 2023 price.

The November average **oat** price per bushel, at \$4.12, was 41 cents above October and 74 cents above November 2023.

**All hay** prices in Wisconsin averaged \$146.00 per ton in November. This was \$9.00 above the October price and \$6.00 above the November 2023 price. The November 2024 **alfalfa hay** price, at \$157.00, was \$10.00 above the previous month but \$39.00 below November 2023. The average price received for **other hay** during November was \$103.00 per ton. This was \$12.00 below the October price and \$37.00 below November last year.

The average price for **milk** was \$22.90 per cwt, \$2.50 below the October price but \$2.70 above November 2023.

## Prices Received by Farmers – Wisconsin and United States

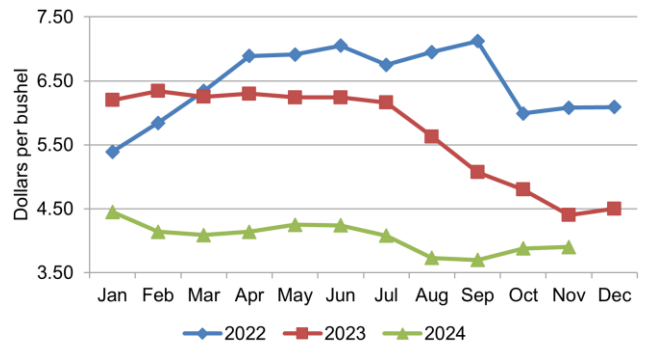
	Wisconsin			United States		
	November 2023	October 2024	November 2024	November 2023	October 2024	November 2024
	(dollars)	(dollars)	(dollars)	(dollars)	(dollars)	(dollars)
Corn .....bu	4.40	3.88	3.90	4.66	3.99	4.07
Hay, all baled .....bu	140.00	137.00	146.00	198.00	165.00	159.00
Alfalfa .....ton	196.00	147.00	157.00	209.00	173.00	165.00
Other .....ton	140.00	115.00	103.00	174.00	147.00	147.00
Oats .....bu	3.38	3.71	4.12	3.92	3.33	3.50
Soybeans .....bu	12.80	9.90	9.73	13.00	9.91	9.84
Milk, all .....cwt	20.20	25.40	22.90	21.60	25.20	24.20

## Livestock Prices Received by Farmers – United States

	November 2023	October 2024	November 2024
Calves .....cwt	290.00	322.00	334.00
Cattle, all beef .....cwt	180.00	187.00	188.00
Cows <sup>1</sup> .....cwt	104.00	128.00	124.00
Steers and heifers .....cwt	184.00	189.00	190.00
Hogs, all .....cwt	57.50	63.90	65.40
Barrows & Gilts .....cwt	57.50	63.60	65.30
Sows .....cwt	58.10	70.60	66.10
Eggs, market <sup>2</sup> .....doz	1.61	2.72	3.21

<sup>1</sup> Beef cows and cull dairy cows sold for slaughter.  
<sup>2</sup> Also referred to as table eggs.

Corn Price Received by Farmers - Wisconsin



The complete report can be found on the USDA NASS website at [www.nass.usda.gov/Publications](http://www.nass.usda.gov/Publications).