

Smart-View Pro Monitoring Solution



Wireless Temperature Monitoring System

Amanda Gasner

Division of Management Services/Bureau of Laboratory Service - Quality Assurance

WISCONSIN DEPARTMENT OF AGRICULTURE, TRADE AND CONSUMER PROTECTION

January 29, 2026



1



**EQUIPMENT
MONITORED BY TMS**

- Refrigerators
- Freezers
- Water Baths
- Incubators



2

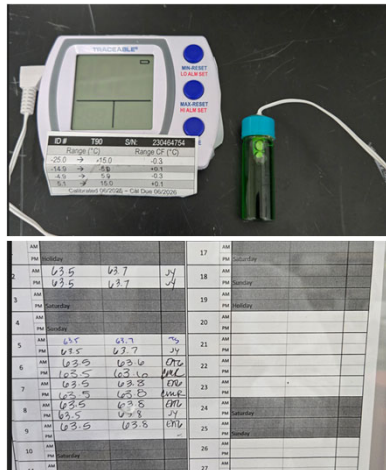
HISTORY OF TEMPERATURE MONITORING

Manual recording, data entry, and review

Multiple types of thermometers used

Inefficient process for temperature management

Only able to monitor equipment when lab is staffed – No holiday or evening coverage



WISCONSIN DEPARTMENT OF AGRICULTURE, TRADE AND CONSUMER PROTECTION

3

SMART-VUE PRO DUO/QUATRO – DATA LOGGER AND SENSOR



Sensors are easily programmed – quick changes in the software allows a logger to be moved between different pieces of equipment



Magnetic mounting case – simple to install logger on equipment



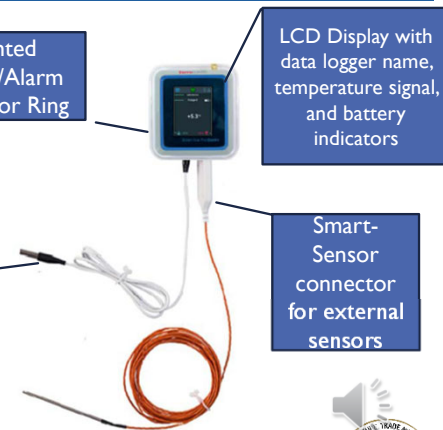
Quatro Loggers support up to 2 sensors at one time – allows for simultaneous viewing of equipment temperature

Lighted Status/Alarm Indicator Ring

External Digital Sensor

LCD Display with data logger name, temperature signal, and battery indicators

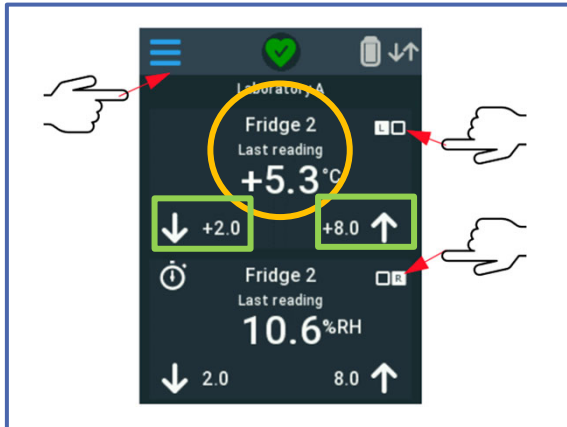
Smart-Sensor connector for external sensors



WISCONSIN DEPARTMENT OF AGRICULTURE, TRADE AND CONSUMER PROTECTION

4

DATA LOGGER DISPLAY



Can access up to 2 sensors simultaneously

Current temperature and programmed limits are visible on the logger screen

The status bar menu allows staff to perform basic actions from the logger screen without logging into the software



WISCONSIN DEPARTMENT OF AGRICULTURE, TRADE AND CONSUMER PROTECTION

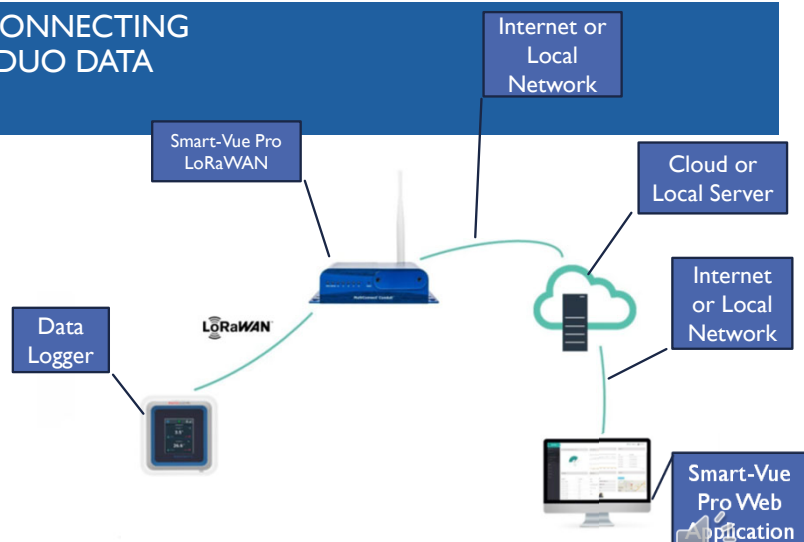
5

OVERVIEW OF RECEIVER CONNECTING SMART-VUE PRO QUATRO/DUO DATA LOGGER TO THE CLOUD

Physical components – Data loggers, sensors and LoRaWAN

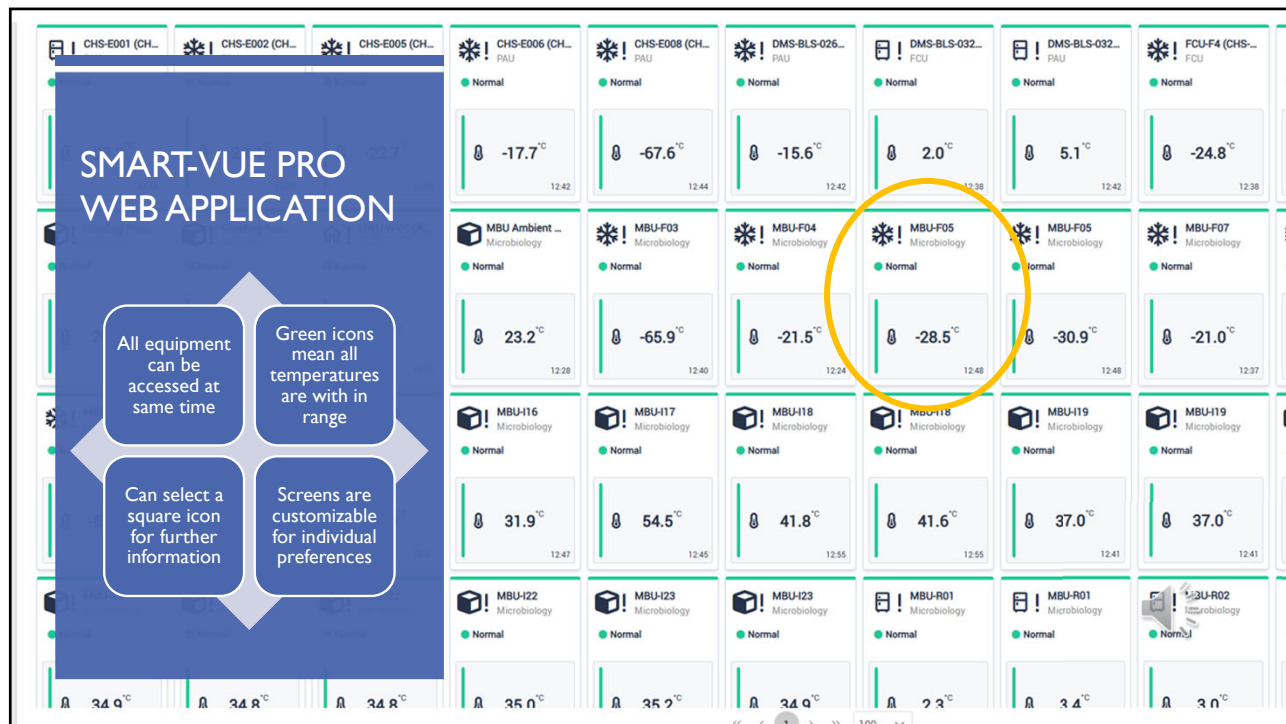
All data transmission occurs via network and cloud transmission

No manual recording

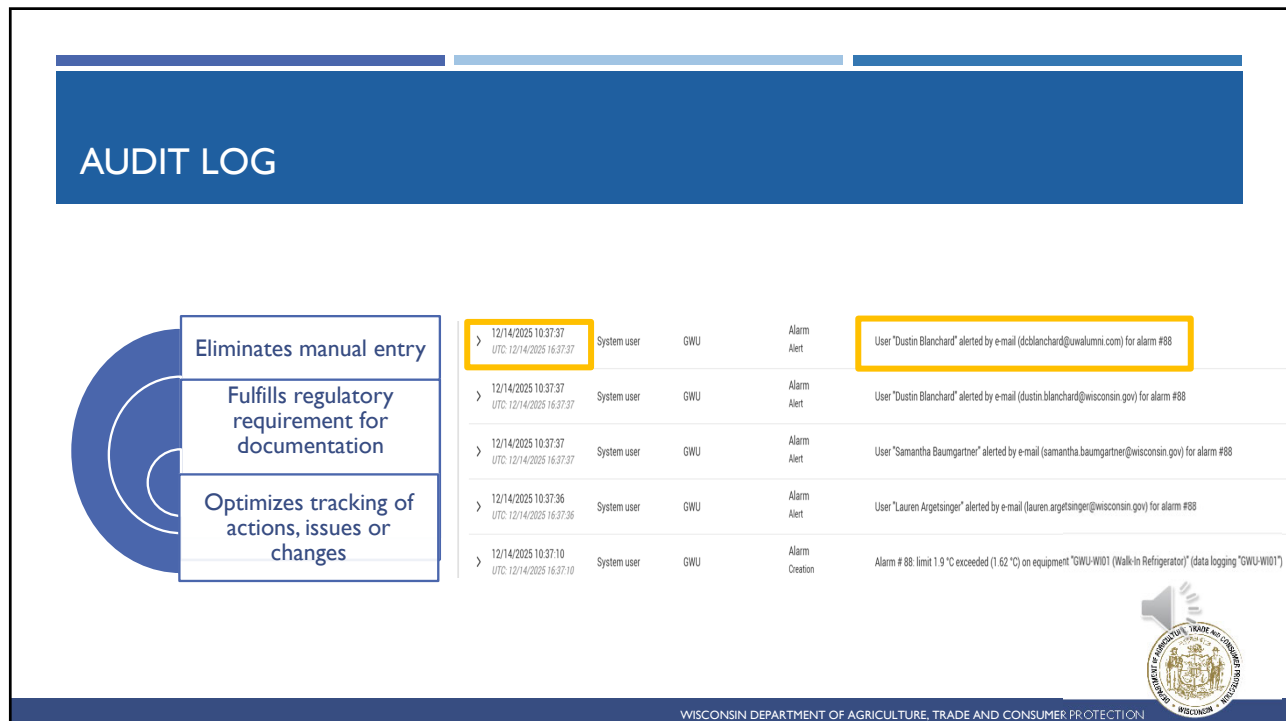


WISCONSIN DEPARTMENT OF AGRICULTURE, TRADE AND CONSUMER PROTECTION

6



7



8

AUDIT LOG DETAILS

01/15/2026 16:08:37 UTC: 01/15/2026 22:08:37 Christine Rippinger Microbiology Alarm Acknowledgment Acknowledgment of limit alarm #92 (programmed value of 8.1 °C) on equipment "MBU-R13" (in data logging session "MBU-R13 2")

Details

- Alarm identifier: 92
- Alarm start: 01/15/2026 16:06:26
- Alarm type: High limit - Level 1
- Data logger: MBU-R13
- Data logger S/N: EAOC10100239
- Data logging: MBU-R13 2
- Equipment: MBU-R13
- Limit value: 8.1 °C
- Physical parameter: Temperature
- Probe S/N: BD00000E476BCA28
- Sensor number: 1
- Trigger value: 8.98 °C
- User: Christine Rippinger

Property name	Old value	New value
Acknowledgment date	01/15/2026 16:08:37	
Cause	Loading	
Corrective action	Samples were loaded into the refrigerator. Temperature will be monitored.	



WISCONSIN DEPARTMENT OF AGRICULTURE, TRADE AND CONSUMER PROTECTION

9

TMS BENEFITS

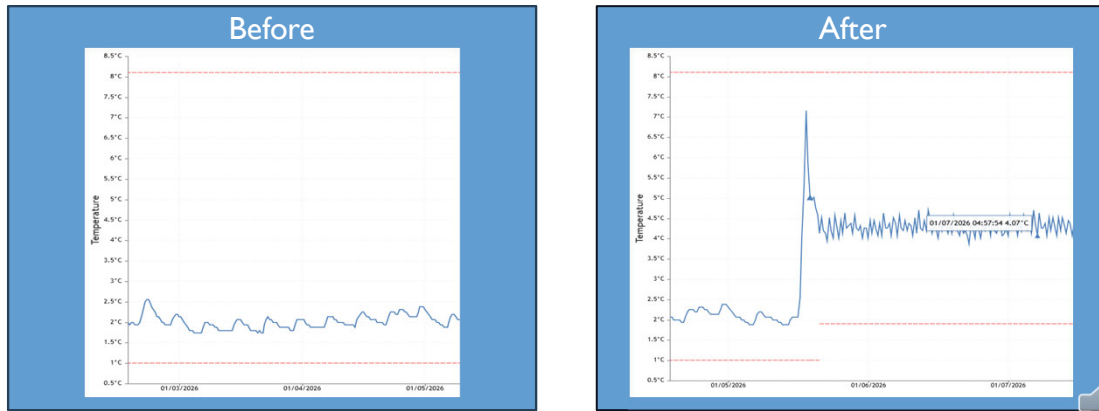
Detect	Detect trends in temperatures – alert staff to failing or malfunctioning equipment
Alert	Instantly alert all staff of out-of-range equipment – text, phone and email
Prevent	Prevent loss of samples and reagents due to 24-hour monitoring - Alarms give staff enough time to move items before damage occurs



WISCONSIN DEPARTMENT OF AGRICULTURE, TRADE AND CONSUMER PROTECTION

10

DATA EVALUATION



WISCONSIN DEPARTMENT OF AGRICULTURE, TRADE AND CONSUMER PROTECTION


11

QUESTIONS?



WISCONSIN DEPARTMENT OF AGRICULTURE, TRADE AND CONSUMER PROTECTION

12



Amanda Gasner

Division of Management Services/Bureau of Laboratory Service – Quality Assurance

Amandam.Gasner@wisconsin.gov

WISCONSIN DEPARTMENT OF AGRICULTURE, TRADE AND CONSUMER PROTECTION (DATCP)

January 29, 2026