



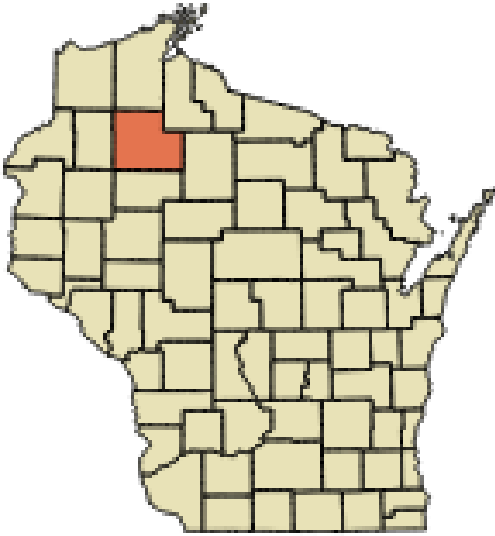
Sawyer County

Land & Water Resource Management Plan

Zoning & Conservation

- We are a merged dept. with zoning & conservation since 2010
- Zoning has an office of 6
- Conservation has an office of 2





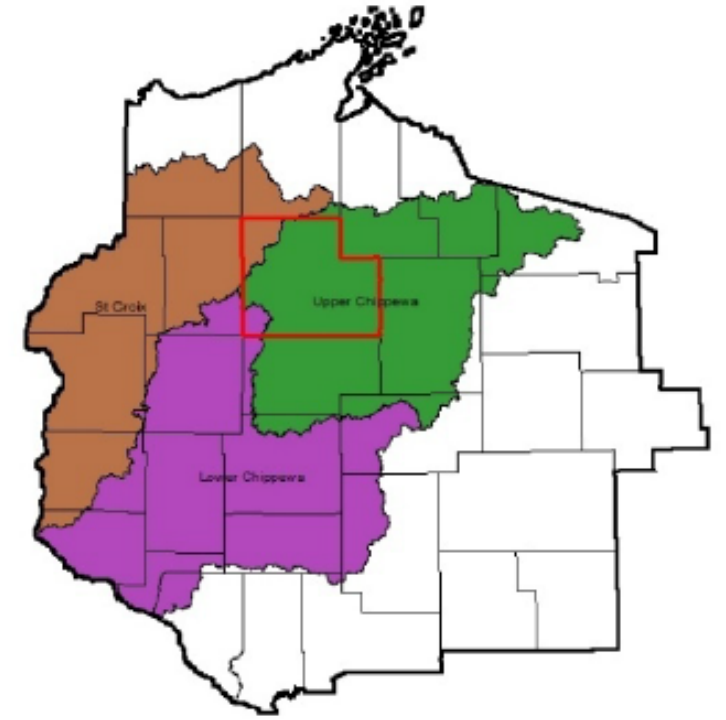
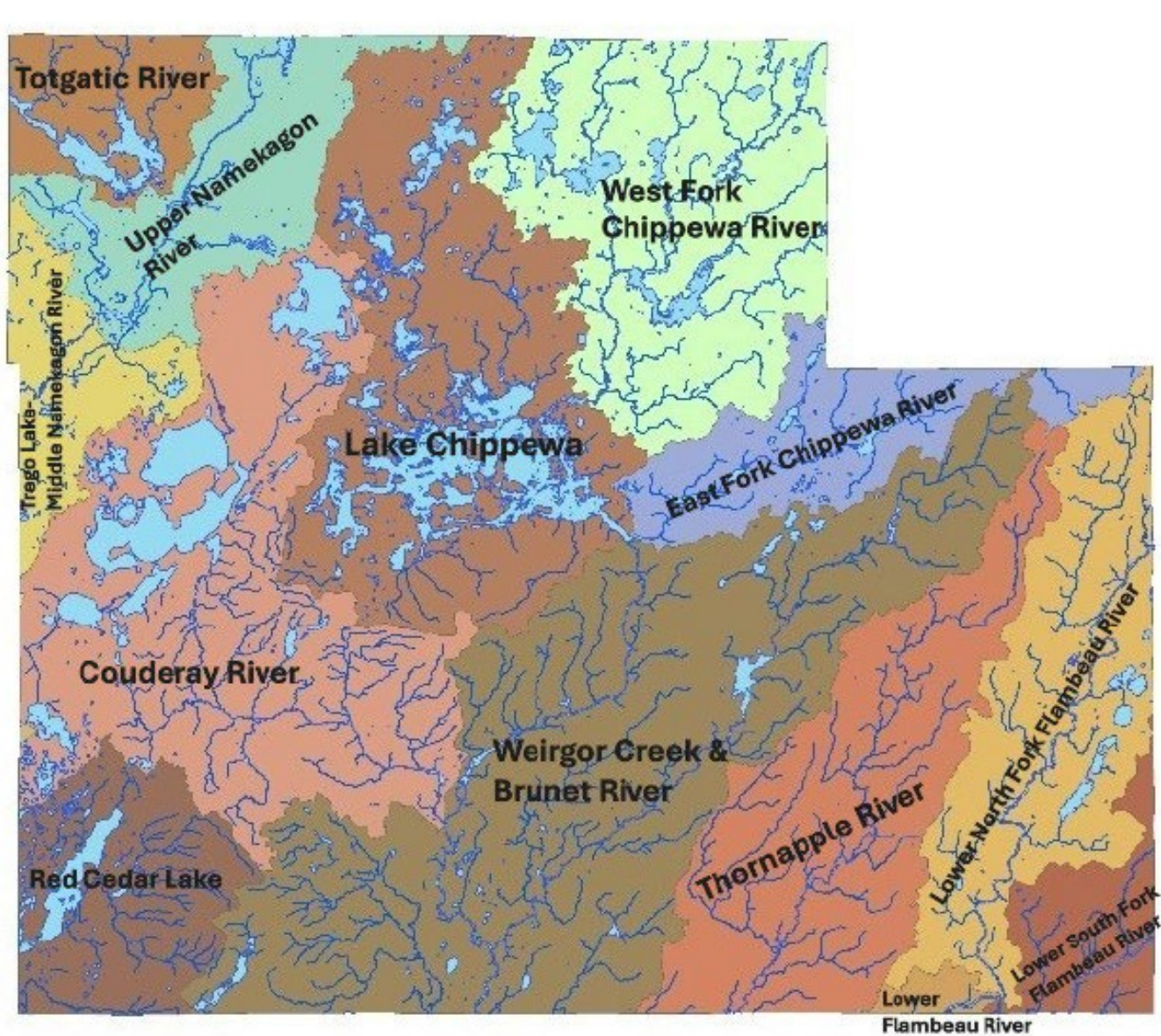
Sawyer County

- Population 18,074
- 1350 square miles total
- 93 square miles of water (6.9%)
- 5th largest county in WI by land area
- Located in the northwest corner of Wisconsin about 70 miles south of Lake Superior
- Formed in 1883 from parts of the Chippewa and Ashland Counties



Surface Water

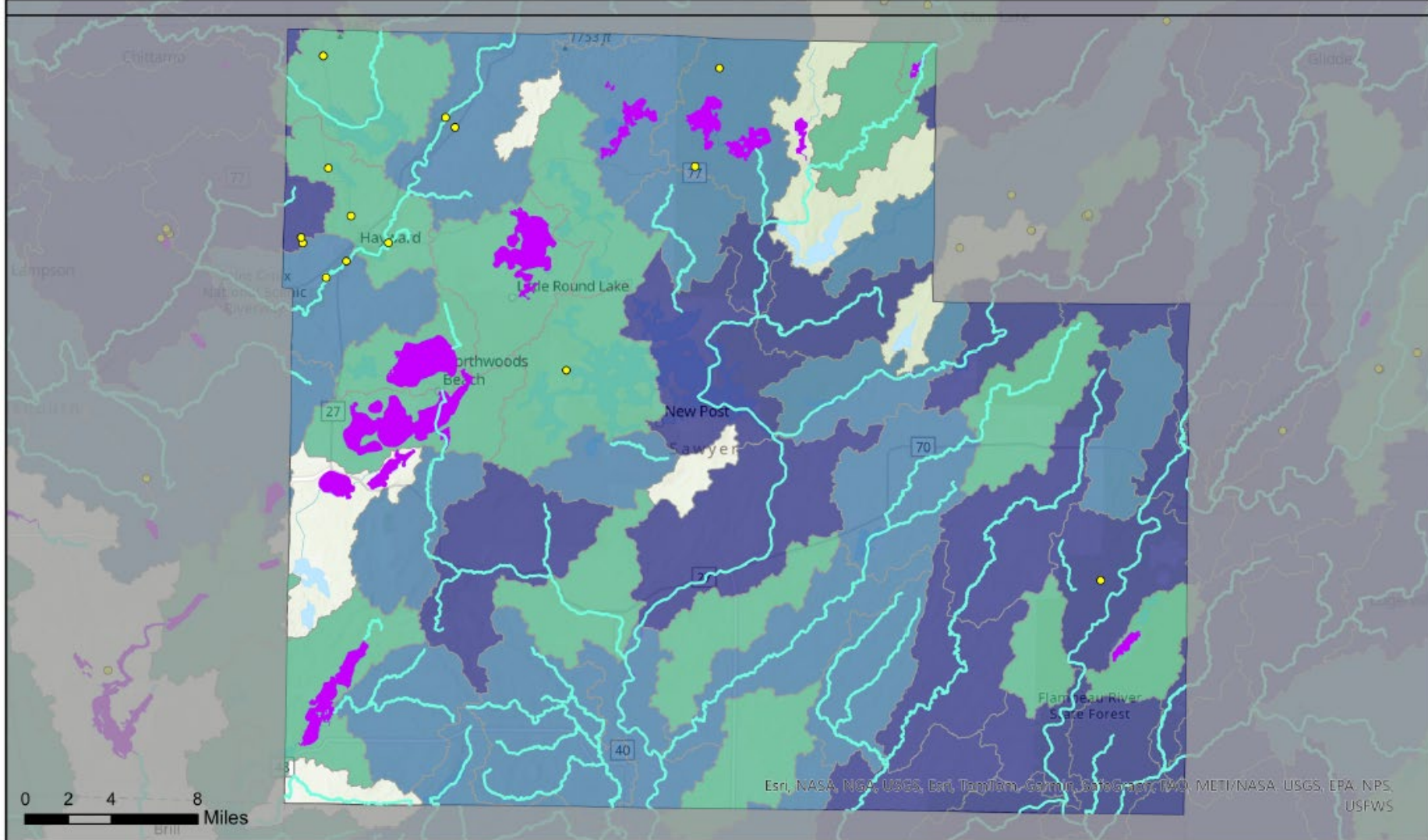
- Sawyer County lakes are legendary for providing recreational activities and producing world record fish.
- Total inland surface water area is approximately 56,180 acres which is more than the size of the 4 smallest counties
- There are 496 lakes in Sawyer County, including the 15,300 acre Chippewa Flowage, the third largest inland water body in Wisconsin
- Approximately 850 miles of shoreline in Sawyer County



14 Watersheds

- 3 Basins
- Upper Chippewa
- Lower Chippewa
- St. Croix

Sawyer County - Healthy Watersheds, High-Quality Waters (2021)



Statewide Watershed Protection Priorities

- Top 10% (Healthiest)
- Top 10-20%
- Top 20-30% (Healthy)

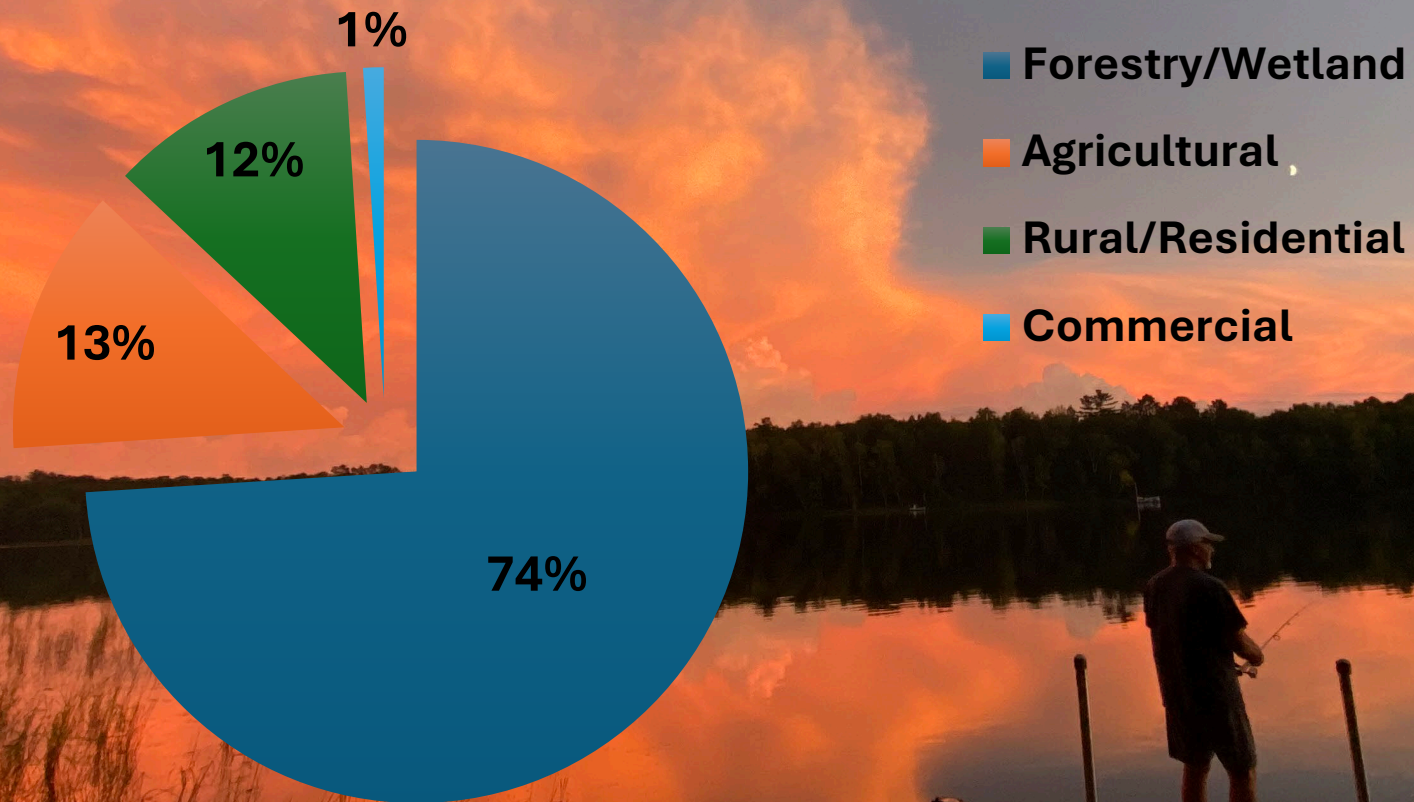
High-Quality Waters

- Healthy & Rare Wetlands
- High-Quality Lakes & Large Rivers
- High-Quality Streams

Sawyer County Boundary



Land Use in Sawyer County



Sawyer County, Wisconsin

Comprehensive Plan 2020

Map 20 - Zoning





Cost Share Waiting List

- Currently have 18 cost share projects on a waiting list totaling ~\$500,000 in total project cost
- 2026 DATCP Cost Share Funding: \$26,000

Shoreline Projects



Shoreline Projects





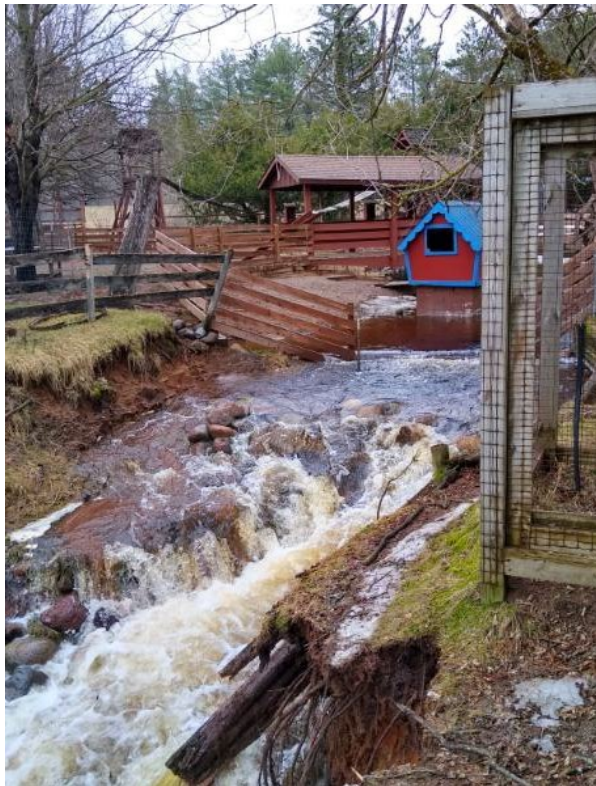
Agricultural Projects

Nutrient Management

- 7,080 acres enrolled
- Approx. 25% cropland covered
- Adding Cranberry NMFE



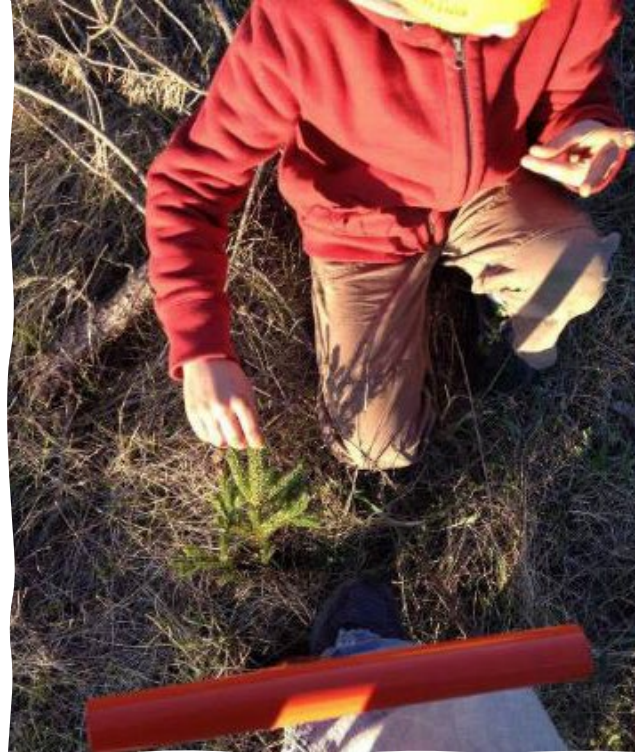
Upcoming Project



Education & Outreach

- Poster & Speaking Contest
- Conservation Camps
- Trainings & Presentations





Tree Sale

- 30th Anniversary!
- 95,675 sold over 30 years
- Tree Planter for rent
- All online
- Looking to expand by adding native plant sale



2026 Sawyer County
Tree & Shrub Sale

30th Anniversary!

Pick-Up Dates:

Friday, May 8, 2026 - 9am-5:30pm

Saturday, May 9, 2026 - 9am-10am

Pick-Up Location:

Sawyer County Fairgrounds
10172N Bender Rd, Hayward, WI 54843

Thank you all for your continued support!

Aquatic Invasive Species

- Public Awareness
- Trainings
- Lake Monitoring



Non-Metallic Mining



64 Active Pits

Questions?

Thank you!

