



## Land and Water Conservation Board Agenda

June 2, 2026

The Land and Water Conservation Board (LWCB) will meet on **June 2, 2026**. The board will hold its official business meeting at 9:00 a.m. via Microsoft Teams. To attend the meeting remotely, join by telephone at +1 608-571-2209 with Conference ID 174656686# or go to the following website and register to receive the access link:

<https://events.gcc.teams.microsoft.com/event/c6a5e766-9644-424c-98fd-9e7b9f8e7f4a@f4e2d11c-fae4-453b-b6c0-2964663779aa>. The agenda for the meeting is below.

### AGENDA ITEMS AND TENTATIVE SCHEDULE:

- 1 Call the Meeting to Order – **Mark Cupp, LWCB Chair**
  - a. Roll Call
  - b. Pledge of allegiance
  - c. Open meeting notice
  - d. Introductions, Acknowledgements
  - e. Approval of agenda
  - f. Approval of April 7, 2026 meeting minutes

- 2 Public appearances\*

*\*Each speaker is limited to 5 minutes or less. Each speaker must complete a Public Appearance Request Card and submit it to a DATCP representative before the start of the meeting*

- 3 Recommendation for approval of LWRM Plan 5-Year Review for Waupaca County  
**Brian Haase, County Conservationist and Stefan Stults, Nutrient Management Specialist; DuWayne Federwitz, LWCC Chair**
- 4 Recommendation for approval of LWRM Plan 5-Year Review for Waushara County  
**Josh Saykally, County Conservationist; Dave Bosshard, LWEC Vice Chair**
- 5 Education Item: Jumping Worms  
**Brad Herrick, Lakeshore Nature Preserve Director, UW-Madison**

*Next Page*

*Mark Cupp, Chair; Monte Osterman, Vice Chair*

*Brian McGraw, Secretary*

*Members: Andrew Buttles; Ron Grasshoff; Rebecca Clarke; Mike Hofberger; D.J. Nichols*

*Andrew Potts; Tim Anderson; Jason Knutson*

- 6 Agency reports
  - a. FSA
  - b. NRCS
  - c. UW-CALS
  - d. UW Madison - Extension
  - e. WI Land + Water
  - f. DOA
  - g. DATCP
  - h. DNR
  - i. Member Updates
  
- 7 Planning for August 2026 LWCB Meeting -  
**Mark Cupp, LWCB**
  
- 8 Adjourn

**MINUTES**  
**LAND AND WATER CONSERVATION BOARD MEETING**

**April 7, 2026**  
2811 Agriculture Drive, Board Room &  
Microsoft Teams Meeting

**Item #1      Call to Order—pledge of allegiance, open meeting notice, approval of agenda, approval of February 3, 2026 LWCB meeting minutes.**

---

**Call to Order**

The Land and Water Conservation Board (Board) met in person at 2811 Agriculture Drive, Madison WI 53718 and over Microsoft Teams on **April 7, 2026**. The meeting was preceded by public notice as required by Wis. Stat. § 19.84. The meeting was called to order by Chairman Mark Cupp at **9:00 am** and the pledge of allegiance was conducted.

**Members and Advisors Present**

**Members:** Mark Cupp, Monte Osterman, Brian McGraw, Andy Buttles, Rebecca Clarke, Mike Hofberger, Tim Anderson, Andrew Potts, Jason Knutson. A quorum was present.

**Advisors:** Ryan Gerlich (NRCS), Ian Krauss (FSA), Matt Krueger (WI Land + Water), Dr. Francisco Arriaga (UW Extension), and Amber Radatz (UW CALS)

**Approval of Agenda**

**Motion**

McGraw motioned to approve the agenda, seconded by Knutson, and the motion carried unanimously.

**Approval of Minutes**

**Motion**

Hofberger motioned to approve the February 3, 2026, meeting minutes as amended, seconded by Anderson, and the motion carried unanimously. The approved minutes shall be posted as the official meeting record for publication on the LWCB website.

**Item #2      Public Appearances**

---

No public appearance cards were submitted.

**Item #3 Recommendation for approval of LWRM Plan 5-Year Review for Milwaukee County**

---

Tim Detzer, Principal Environmental Engineer and County Conservationist; Sheldon Wasserman, Parks and Culture Chair formally requested a recommendation of approval from the Board regarding the County’s LWRM plan 5-Year Review.

The County provided written answers to the Board’s standardized questions, recent work plans and accomplishments, and other materials (available on LWCB’s website: [lwcb.wi.gov](http://lwcb.wi.gov)).

**Motion**

After a discussion between the Board and County representatives, Osterman motioned to recommend approval of Milwaukee County’s LWRM plan revision, seconded by Potts, and the motion carried unanimously.

**Item #4 Recommendation for approval of LWRM Plan 5-Year Review for Pierce County**

---

Rod Webb, Land Conservation Director; Jerry Kosin, LCC Chair formally requested a recommendation of approval from the Board regarding the County’s LWRM plan 5-Year Review.

The County provided written answers to the Board’s standardized questions, recent work plans and accomplishments, and other materials (available on LWCB’s website: [lwcb.wi.gov](http://lwcb.wi.gov)).

**Motion**

After a discussion between the Board and County representatives, Anderson motioned to recommend approval of Pierce County’s LWRM plan revision, seconded by McGraw, and the motion carried unanimously.

**Item #5 Education Item: Soil Health**

---

Randy Zogbaum, DATCP presented on the importance of soil health. An introduction to soil health training and more information can be found at the [DATCP Home Soil Health](#). The direct link to the training can be found at [DATCP Home Soil Health Training](#).

**Item #6 Recommendation for approval of LWRM Plan 5-Year Review for Buffalo County**

---

Cale Severson, County Conservationist; Max Weiss, LCC Chair formally requested a recommendation of approval from the Board regarding the County’s LWRM plan 5-Year Review.

The County provided written answers to the Board’s standardized questions, recent work plans and accomplishments, and other materials (available on LWCB’s website: [lwcb.wi.gov](http://lwcb.wi.gov)).

**Motion**

After a discussion between the Board and County representatives, Hofberger motioned to recommend approval of Buffalo County’s LWRM plan revision, seconded by Anderson, and the motion carried unanimously.

**Item #7 Extension of DATCP Projects from 2025 into 2026; Report on Transfers and Reallocations of 2025 Cost-Share Dollars (written report only)**

---

Hailey Roessler and Abby Johnson, DATCP presented on the addendum to the 2026 Joint Allocation Plan.

McGraw motioned to approved the extension of DATCP Projects from 2025 to 2026 as presented, seconded by and the motion carried unanimously.

**Item #8 Revised Board Questionnaires**

---

Jenn Chakravorty, DATCP presented a recommendation to add a single question to the LWCB Land and Water Resource Management Plan Review and Revisions questionnaires related to needed research and educational programs relating to soil and water conservation. The LWCB had previously contemplated a second question to identify what research or management techniques counties currently use to address land and water conservation issues. However, between the February and April meetings of the Board, Chakravorty consulted with UW Advisors to the Board who reported an additional question was not necessary. Drafts of the review and revision questionnaires were provided in the meeting materials.

After a discussion between the Board and UW Advisors, Osterman motion to approve the addition of the single question as presented by DATCP, seconded by McGraw, and the motion carried unanimously. The proposed drafts of the review and revision questionnaires will be updated on the LWRM Planning webpage, and updated versions of the questionnaires will be shared with counties that have reviews and revisions coming up.

**Item #9 Lunch Break**

---

**Item #10 NR 151 Progress and Resources Assessment (NPRA)**

---

Jason Knutson, DNR; Chris Clayton, DATCP; Matt Krueger, WI Land + Water; Ken Genskow, UW presented on the NR151 Progress and Resources Assessment (NPRA). NPRA is a cooperative effort between the DNR, DATCP, Wisconsin Counties with data analysis and support by the University of Wisconsin System. The project is designed to quantitatively evaluate the progress of adoption of agricultural performance standards in Wisconsin. The presentation will be available on the website.

**Item #11 LWCB Advisory Committee on Research**

---

Kirsten Biefeld, DATCP presented on the March meeting of the Advisory Committee on Research. Biefeld highlighted outcomes of the committee's efforts between 2022 and 2026. The 2022-23 Soil & Water Conservation Research and Educational Needs Survey will not be replicated unless review of the research-need responses gathered from the updated LWRM plan update and review questionnaires indicate value in another stakeholder survey, and the Board, in combination with University of Wisconsin feedback and review of DATCP resources, determine another survey is needed and feasible to implement.

DATCP will aggregate county responses to revised board questionnaires for reviews and revisions to summarize county perspectives on needed research and educational programs relating to soil and water conservation on a yearly basis and refer a summary report to the LWCB. Following a unanimous vote at the March 10, 2026 meeting, the committee transitioned from standing bi-monthly meetings to ad

hoc, meeting when determined necessary by the LWCB chairperson. To reflect this change, a minor adjustment will be required in the Board's bylaws at its December 2026 bylaw review. A draft of the March 10 meeting minutes will remain posted on the LWCB website until they are approved at a future Advisory Committee on Research meeting.

## **Item #12      Agency Reports**

---

- a. FSA- Krauss provided a written report that is available online at the Land and Water Conservation Board website within the April 7, 2026 [meeting packet](#).
- b. NRCS- Gerlich reported NRCS has started obligating EQIP contracts for a new regenerative pilot program focused on soil health. Additionally, NRCS is reviewing all active partnership agreements to ensure they are on task with expected outcomes; all agreements are frozen until reviewed with no deadline date yet given.
- c. UW-CALS- Arriaga reported Chancellor Jennifer Mnookin is leaving UW in June and UW-Madison dean Eric Wilcox will serve as the interim chancellor starting May 17. On May 12 there will be a Dairy Symposium showcasing the Dairy Innovation Hub's research at the Memorial Union. On August 26 there will be an Agronomy and Soils Field Day at the Arlington Ag Research Station.
- d. UW-Extension – No update provided.
- e. WI Land + Water- Krueger reported that WI Land + Water is continuing programming for a 2026 summer cohort of the WI Grazing Academy (which was previously coordinated by the Grassland 2.0 project). The intention is to repeat the grazing academy next year. The 2026 Spring Conservation Partnership Training will take place on May 13 in Baraboo; there will also be a fall training. Registration here: <https://wisconsinlandwater.org/conservation-training/2026-spring-conservation-partnership-training>
- f. DOA- Potts reported that Ryan Hutter will be leaving DOA with the vacancy to be filled by July. Act 200 & 201 were signed into law as well as Assembly Bill 605 Act 169. The Knowles Nelson Stewardship Program will not be extended past 7/30/26 and supplemental funding for dairy cattle innovation has not been allocated for 2026.
- g. DATCP- Anderson submitted a written report that is available online at the Land and Water Conservation Board website within the April 7, 2026 [meeting packet](#).
- h. DNR- Knutson reported that Erin Hanson will be the new Northeast Watershed Supervisor. TRM and Urban nonpoint applications are due 4/15. A written report is available within the February 3, 2026 [meeting packet](#).
- i. Member Updates- No member updates

**Item #13 Planning for the June 2026 LWCB Meeting**

---

The Board should expect the following at the next LWCB meeting, which will be a hybrid meeting:

- LWRM 5 Year Plan Review for Waushara and Waupaca Counties
- The 2025 Annual Soil and Water Conservation Report (if available)
- Board Education Item: Jumping Worms

**Item #14 Adjourn**

---

**Motion**

Knutson motioned to adjourn, seconded by Anderson, and the motion carried unanimously. The business meeting was adjourned at 12:53pm.

DRAFT

**CORRESPONDENCE/MEMORANDUM** \_\_\_\_\_ **State of Wisconsin**

**DATE:** June 2, 2026

**TO:** Land and Water Conservation Board Members and Advisors

**FROM:** Jenn Chakravorty, DATCP  
Resource Management Section,  
Bureau of Land and Water Resources

**SUBJECT:** Five Year Review of the *Waupaca County Land and Water Resource Management Plan*

**Recommended Action:** This is an action item. The LWCB should determine whether the county has met the LWCB's criteria for a five-year review of a LWRM plan approved for ten years. If the LWCB makes a formal determination that the county has failed to meet these criteria, DATCP will automatically modify its order to terminate approval of the county's plan effective December of this year.

**Summary:** The Waupaca County Land and Water Resource Management plan has been approved through December 31, 2031, contingent on a five-year review conducted prior to December 31, 2026. In advance of the five-year review, Waupaca County has completed a DATCP approved form designed to implement the LWCB's reference document dated October 27, 2021, and the criteria for conducting a five-year review. The county has provided written answers to four questions regarding past and future implementation, has provided the required work planning documents, and has appropriately involved the Land Conservation Committee.

**Materials Provided:**

- Completed Five Year Review Form
- 2025 Annual Workplan with Accomplishments
- 2026 Annual Workplan

**Presenter(s):** Brian Haase, Waupaca County Conservationist  
Stefan Stults, Nutrient Management Specialist  
DuWayne Federwitz, Land and Water Conservation Committee Chair



Land and Water Conservation Board  
County Land and Water Resource Management Plan  
Five Year Review of LWRM Plans

**County: Waupaca**

**Implementation Covering Past Five Years and Future Directions**

Answer these four questions in writing (not to exceed 4 pages)

1. Provide a representative number of accomplishments that can be directly traced to activities identified in multiple work plans. For each accomplishment, explain how the planning process helped the county achieve its outcome, including planning adjustments that helped better target county activities.
  - a. Cropland
    - i. Sustained growth in Nutrient Management Plan Coverage.
      1. Expanding NMP coverage has been a consistent priority across all five work plans and are directly tied to the LWRM Plan Chapter 5, Goal I: Protect and improve the quality of surface water resources and Goal II: Protect and maintain the long-term viability of agricultural lands. Benchmarks set in each year's work plan were set to increase county acreage under NMPs and to continue conducting individualized farmer training sessions.
      2. The planning process produced measurable results over the 2022 to 2025 period as new acres of NMP coverage grew steadily each year. This represents substantial progress toward the NMP coverage goals established in the LWRM plan, which noted an estimated 52% coverage baseline at the time of plan adoption.
      3. Farmer training sessions showed consistency across all five years, demonstrating a steady outreach effort by staff to ensure farms opting to prepare their own NMP were provided support during each annual update.
      4. A notable planning adjustment occurred in the annual NMP acreage growth benchmark. Shifting from a 2-3% target in 2022 down to 1-2% by 2025. This adjustment recognized that as overall NMP coverage increased, a smaller growth target was more realistic and meaningful target than aggressive percentage increases.

ii. Cropland Best Management Practice Expansion Through Strategic Use of Multiple Funding Sources

1. From year one of the current LWRM plan each year's work plan included targeted activities to install cover-crops, no-till plantings and harvestable buffers using cost-share funding. These practices directly address TMDL goals, 9KE Plan objectives, and state performance standards under LWRM Plan Goal I and Goal II.
2. Over the 2022-2025 period Waupaca County LWCD consistently achieved strong cover crop implementation: 4,733 in 2022, 4,945 in 2023, and 4,860 in 2024. A key planning adjustment visible across these years is the deliberate expansion and diversification of funding sources — our 2021 plan relied primarily on Large Scale TRM funds, while subsequent plans, under the new LWRM Plan progressively added GLRI funds, DATCP funds as those opportunities became available. This multi-funding strategy allowed the county to sustain and grow practice installation even as individual grant programs cycled in and out of availability.
3. No-Till planting acreage similarly reflects an adaptive approach as implementation varied widely from 641 acres in 2022, 916 in 2023, 510 in 2024, and 1,500 in 2025. As new funding sources became available staff directed grant recipients into implementation, and year to year variability reflects changes in cropping rotations preventing the practice or specific targeting of desired new adopters.
4. The Harvestable Buffer benchmark also shows an adapting strategy over the period. Targets shifted from 20-30 acres in 2022 down to 5-10 acres in 2025 as adoption of the BMP informed a more realistic planning target.

b. Livestock

- i. The Waupaca County LWCD has demonstrated across multiple work plans from 2022-2025 a sustained commitment to navigating the complexity of large-scale livestock facility best management practice implementation. Working with landowners to develop ideas into engineered designs meeting NRCS standards, incorporating existing infrastructure, and coordinating with partner agencies to secure complementary funding requires substantial investment of staff time and technical expertise. Projects of this scale routinely require a multi-year effort, and the competitive nature of grant funding — particularly EQIP at the state level — means staff must invest time developing plans as fully as possible prior to submission to remain competitive with projects across the state vying for the same federal funding.

By deliberately building this development timeline into annual work plan sequencing, the county ensures that promising projects are positioned for success rather than rushed into an underdeveloped application cycle.

c. Watershed

- i. The Waupaca County LWCD completed development of one new 9 Key Element (9KE) plan in the Bear Creek HUC12 Watershed and one new National Water Quality Initiative (NWQI) watershed plan, covering three HUC12 watersheds in the Pigeon River within the past three years. The county strategically spaced development of these long-term plans to better distribute both planning and implementation workloads over time while using the Upper Fox-Wolf TMDL as a guide to prioritize watersheds most in need of restoration and targeted conservation efforts. Through these planning efforts, priority resource concerns were identified, allowing staff and partners to better target conservation practices, outreach efforts, and funding opportunities toward areas where the greatest water quality improvements could be achieved. In 2025 and 2026, Waupaca County successfully secured a Wisconsin DNR Targeted Runoff Management (TRM) Grant in the Pigeon River Watershed and Bear Creek Watershed, respectively, to address water quality concerns discovered during the development of each of the plans. In addition, the completion of the Pigeon River Watershed NWQI Plan created additional NRCS funding opportunities in the watershed to further address watershed concerns alongside the existing TRM grant. NWQI Plan criteria and 9KE Plan criteria are nearly identical and Waupaca LWCD will seek DNR/EPA 9KE approval for the Pigeon Plan in the very near future.

2. Identify any areas where the county was unable to make desired progress in implementing activities identified in multiple work plans. For each area identified, explain the work plan adjustments that were made to refocus planned activities. If no areas are identified, explain how the county was able to make progress in all the areas planned.
  - a. Across multiple work plans, the county established goals for both NMP cost share offer acceptance and annual acreage growth targets, reflecting the LWRM Plan Chapter 5 Goal I commitment to increasing NMP coverage and implementing agricultural performance standards. While both NMP acreage growth and NMP training session participation have remained strong, two other work plan goals have consistently proven difficult to achieve.
    - i. Acceptance of offers of cost share was consistently at the low end of our target of 3-10, with both 2022 and 2025 below the target. Simultaneously, annual

- NMP acreage growth targets, originally starting at 2-3% per year, required downward adjustment by 2025 as participation slowed.
- ii. One driver of this trend is the perpetuity clause associated with accepted cost share offers. Under this provision of NMP cost share contracts, a farm that accepts and receives a bona fide cost share payment becomes obligated to maintain NMP compliance in perpetuity. While we agree with the intent of the provisions existence to protect long-term water quality outcomes, it increasingly becomes a reason farms or landowners decline the offers.
  - iii. Resistance to accepting offers creates a secondary challenge with respect to enforcement actions following a documented refusal of a bona fide offer of cost share. While a regulatory pathway exists to pursue compliance, current staffing and resource limitations make consistent enforcement untenable.
  - iv. Adjustments to how cost share money is spent, for example shifting DATCP SWRM funding from NMP to Cover Crops and no-till has allowed us to continue making gains in TMDL goals.
- b. Work plans from 2022 through 2024 included annual targets of 20-30 acres of Harvestable Buffer installation as part of a DATCP pilot program, directly supporting LWRM Plan Goal I and Goal II objectives around protecting vulnerable fields and reducing nutrient and sediment loading.
- i. Performance in 2022 and 2023 exceeded targets — achieving 37.7 and 43.5 acres respectively — largely due to complementary funding leveraged through partner agency programs that allowed the county to stretch available resources beyond base allocations. However, implementation stalled in 2024 due to staff prioritizing other projects as we were waiting for a revision of ATCP 50 to be completed. This resulted in zero acres installed despite the 20-30 acre benchmark remaining in the work plan.
  - ii. In response, the 2025 work plan refined the target downward to 5-10 acres to reflect a more realistic implementation outlook. However, the county was again unable to install any Harvestable Buffer acres in 2025. We believe the primary driver of the missed target in 2025 was the November 2024 publication of a revised ATCP 50 that now included Harvestable Buffers as a cost shareable practice. A listed ‘Eligibility Requirement’ for the practice stipulates the site must not be eligible for the Conservation Reserve Enhancement Program (CREP). While our county does participate in the CREP program, the new eligibility requirement forces our hand into a program that is frankly more complex and administratively burdensome than our staffing commitments can keep up with. Additionally, NRCS soil rental rates used to set CREP payments are too low in eligible areas to entice participation in the CREP program as compared to other funding sources.

3. Describe how the county's work plans implement its priority farm strategy and the effectiveness of county actions implementing agricultural performance standards and conservation practices on farms. In particular, the county should describe outreach, farm inventories, and additional funds that were pursued to implement its strategy.
  - a. Waupaca County LWCD's approach to implementing agricultural performance standards is well represented in our workplans. We have a multi-layered strategy based on regulatory compliance, targeted outreach and strategic use of available funding, all grounded in the goals and objectives established in LWRM Plan Chapter 5.
  - b. The Waupaca County townships participating in the Farmland Preservation Program host most of our counties active farm operations. Requirements for landowner participation allow staff to engage with landowners and farm tenants through the Nutrient Management Planning and physical field and facility inspections and often identify sites where we can implement best management practices. On-site inspections also result in staff being able to identify more priority farms simply through the act of driving to a site. We actively look for issues across the landscape and often try to time our inspections after weather events that may make field problems more evident.
  - c. Complementing the FPP inspection program, the county has utilized watershed inventories developed through 9 Key Element (9KE) Plans to identify and prioritize farms in high-loading watersheds. These inventories provide a spatially targeted layer of priority-setting that directs county resources toward farms and fields with the greatest potential impact on water quality outcomes, particularly in watersheds identified under the Upper Fox-Wolf Basin TMDL. By integrating 9KE Plan data into work plan development, the county ensures that practice implementation is targeted where it will produce the most meaningful sediment and nutrient reductions, rather than being distributed uniformly across the landscape.
  - d. An important part of Waupaca County LWCD's strategy has been the active and persistent pursuit of additional funding to extend our financial and spatial reach. Throughout the 2022-2025 period, we have pursued and utilized funding from multiple sources including Targeted Runoff Management (TRM) grants, Great Lakes Restoration Initiative (GLRI) funds, Section 319 Clean Waters Act grants, DATCP cost share programs, DATCP Innovation Funds, and County ARPA funds. The diverse funding options allowed us to fill gaps where we could as either funding or grant lifetimes were depleted, target new priority areas, and offer new best management practices that farms and landowners were asking for assistance to begin implementing.
4. Provide representative examples that show changes in direction for work planning in the upcoming five years, with specific examples provided showing adjustments in planned activities in the county's most recent work plan.

- a. The most recent work plan identifies securing GLRI grant funds within a 9KE planned watershed as a priority watershed activity. This represents a significant shift from previous work plans as new GLRI funding requires a multi-practice, multi-year contracting effort for participants rather than the single practice, single year agreements that have been our standard from 2022-2025. Such a change brings with it greater administrative complexity for both staff and grant participants. Given Waupaca County's strong dairy farm presence and exceptional participation by these farms contractual problems are expected to arise as cropping decisions are made annually in response to herd size, feed needs, and market conditions. Staff will be challenged to shift mindsets and tracking tools into a multi-year effort requiring a significantly more concerted effort to ensure participants are complying with contractual obligations and staff are tracking and reporting accurately to grant administrative deliverables.
- b. The 2026 work plan continues the downward trend of large agricultural facility work that we saw moving from the 2024 work plan to the 2025 work plan. A primary driver of this decrease is the substantially increasing costs associated with large facilities making this type of project difficult, even when leveraging multiple sources available to us and/or partner agencies.
- c. The 2026 work plan maintains the 4,000-acre cover crop and no-till benchmark established in recent years, but an important internal shift is underway in how those acres are being targeted. Through the county's experience implementing multiple grant programs and meeting their required deliverables, staff has identified measurable differences in the effectiveness of certain best management practices. Modern modeling tools, such as STEPL and PLET, have shown that no-till practices deliver greater measurable reductions in sediment and nutrient loading than cover crops. As a result, upcoming work plans for the latter half of this LWRM plan period will increasingly emphasize no-till as a priority practice. Cover crops, while still immensely popular and beneficial, are transitioning to a complementary role where their implementation is best suited to the intent of the practice rather than serving as a widely broadcast offering.

### **Annual Work Plans**

Attach both of the following:

- a. The most current annual work prepared by the county.
- b. The work plan for the previous year that includes a column that identifies the progress in implementing the planned activities for that year.

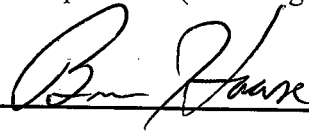
## Board Review Process

The goal of the review is not to fail counties. The board recognizes the dynamic nature of the planning process. Board members are interested in how counties tackle priorities over time and how they respond to changing conditions in pursuing their priorities. The board will evaluate a county's planning and implementation based on how well the county balances and prioritizes the following: agricultural performance standards, other state priorities (impaired waters, FPP checks), and local priorities. When needed, the Board will provide constructive support to counties to improve the quality of their planning. Counties have the option to prepare a brief presentation to illustrate their successes and future priorities.

## Land Conservation Committee Notification

The LCC was provided a completed copy of these questions (including attachments) on:

Signature of Authorized Representative:  
(e.g. County Conservationist, LCC chair)



Date: 5/12/26

Send completed questionnaire and attachments to:  
[jennifer.chakravorty@wisconsin.gov](mailto:jennifer.chakravorty@wisconsin.gov)

**WAUPACA COUNTY 2025 ANNUAL WORK PLAN  
LOCALLY-IDENTIFIED PRIORITIES**

Table 1: Planned activities and performance measures by category

CATEGORY (goal and objective from LWRM plan can be added in each category)	PLANNED ACTIVITIES WITH BENCHMARKS If applicable identify focus areas, e.g. HUC 12 watershed code (examples of types of “planned activities” in italics)	PERFORMANCE MEASUREMENTS (examples in italics)
<ul style="list-style-type: none"> <li><i>Cropland</i></li> </ul>		
<p><b>Farm inspections to implement state performance standards and prohibitions or TMDL goals.</b> LWRM CH. 5, Sec. A, Pg 72- Ag. Perf. Stnds. Implementation</p> <p><b>Cropland conservation practices installed to implement state performance standards and prohibitions or address TMDL goals.</b> LWRM CH. 5, Sec. A, Pg 72- Ag. Perf. Stnds. Implementation</p> <p><b>Maintain and promote better nutrient management plans.</b> LWRM CH. 5, Sec. A, Pg 72, Sec. E, Pg 86.</p> <p><b>Facilitate and manage grant for Upper Fox-Wolf Basin Demonstration Farm Network to promote soil health and field BMP’s through Waupaca County and the UF-W Basin.</b></p> <p><b>Cropland conservation practices installed to implement TMDL goals, 9KE Plan goals and/or state performance standards.</b></p>	<p>Conduct 25 farm inspections &amp; document compliance status for new or existing FPP participants in 10 Townships with FP zoning. Make 3-10 offers of cost share for Nutrient Management Plans in accordance with NR 151.07, NR 151.09 &amp; Waupaca CH 51</p> <p>Install 5-10 gully erosion control practices. Implement 3-10 new NM plans through farmer training sessions, staff training, FP or cost sharing.</p> <p>Conduct 20 or more Individual Farmer Training Sessions or updates. Review 75% of incoming NMP’s (~150) as time allows and work with agronomists/landowners to correct issues. Increase County area covered by NMP by 1-2% per year</p> <p>Implement Demo Farm Network with 17 farms throughout UF-W Basin. Host Demo field days, Farmer roundtables, share soil health information, provide new opportunities for soil health and WQ.</p> <p>Install 4000 acres of cover crop or no-till practices using Large Scale TRM funds, GLRI funds, DATCP funds. Install 5-10 acres of harvestable buffers using Large Scale TRM funds or County ARPA funds.</p>	<p><i>27 FPP Farm Inspections</i> <i>4 Other Compliance Inspections</i></p> <p><i>1 New NMP CSA</i></p> <p><i>3 Erosion Control Practices</i> <i>13,985 Ac of NMP</i></p> <p><i>33 Farmer NMP Training Sessions</i> <i>100% of incoming plans reviewed</i></p> <p><i>Fiscally managed 17 Farm (10 County) UF-W Demo Farm Network</i></p> <p><i>3 Field Days in Waupaca County</i></p> <p><i>3013 Acres Cover Crops</i></p>

**WAUPACA COUNTY 2025 ANNUAL WORK PLAN  
LOCALLY-IDENTIFIED PRIORITIES**

• *Livestock*

<p><b>Farm inspections to implement state performance standards and prohibitions or TMDL Goals</b> LWRM CH. 5, Sec. A, Pg 72- Ag. Perf. Stnds. Implementation</p>	<p>Conduct 25 farm inspections &amp; document compliance status for new or existing FPP participants in 10 Townships with FP zoning. Conduct 1-10 farm inspections outside FP areas that have NR 151 compliance issues.</p>	<p><i>27 Farm Inspections in FP Areas</i> <i>2 Farm Inspections outside FP Areas</i></p>
<p><b>Livestock facility conservation practices installed to implement state performance standards and prohibitions or TMDL goals.</b> LWRM CH. 5, Sec. A, Pg 72- Ag. Perf. Stnds. Implementation</p>	<p>Install agricultural BMPs to reduce animal waste (phosphorous) runoff as identified by inventory or complaint. Design &amp; implement 1-3 large agricultural waste and/or containment runoff systems</p>	<p><i>22 Livestock related BMP's</i> <i>1 Large Agricultural Waste System</i></p>

• *Water quality*

<p><b>Protect water quality through CREP.</b> LWRM CH. 5, Sec. A, Pg 72- Ag. Perf. Stnds. Implementation</p>	<p>Implement 2-4 CREP Contracts with assistance from NRCS/FSA.</p>	<p><i>3 CREP Contracts</i></p>
<p><b>Promote Groundwater awareness.</b> LWRM CH. 5, Sec. D, Pg 84- Groundwater&amp; Karst Concerns</p>	<p>Follow up the 2024 private well testing program, using ARPA funds, with landowners in areas that had high nitrates.</p>	<p><i>2025 Well Testing postponed to 2026</i></p>
<p><b>Lake and Stream Protection.</b> LWRM CH. 5, Sec F, Pg 89 Lake &amp; Stream Protection</p>	<p>Install 1-2 rain gardens through county program. Implement 5-10 DNR Healthy Lakes Grant Projects Apply for/Implement DNR Healthy Lakes Grant Program on 1-10 sites. Continue coordinating/monitoring Citizen Monitoring efforts on 20 stream sites and 4-8 lakes.</p>	<p><i>4 Healthy Lakes Projects implemented</i> <i>Healthy Lakes Grant secured through 2026</i></p> <p><i>Stream sample testing on 6 sites for 6 months</i> <i>Flow monitored 17 streams, 1 lake</i></p>
<p><b>Start inventory of unused manure storage structures in county per Waupaca CH 51.</b></p>	<p>Inspect 1-5 structures and offer c/s if they need to be closed.</p>	<p><i>Inspected 2 sites</i></p>

• *Forestry*

<p><b>Encourage forestry, habitat and tree planting.</b> LWRM CH. 5, Sec J, Pg 100 – Forestry &amp; Wildlife</p>	<p>Sell 35,000 trees through County Tree Sale. Promote EQIP forestry practices.</p>	<p><i>Sold 28,900 trees</i></p>
--	---	---------------------------------

**WAUPACA COUNTY 2025 ANNUAL WORK PLAN  
LOCALLY-IDENTIFIED PRIORITIES**

- *Invasive*

<b>Assist landowners with Identification &amp; Elimination of AIS. LWRM CH. 5, Sec F, Pg 89 Lake &amp; Stream Protection. Waupaca County AIS Plan.</b>	Continue Waupaca County AIS Plan activities as applicable. Financially support Golden Sands RC&D as our AIS contractor.	<i>2 AIS surveys completed</i>  <i>Contracted GSRC&amp;D to manage AIS plan</i>
--	--	---

- *Wildlife*

<b>Administer WDACP (Ag. Damage program &amp; Venison Donation) LWRM CH.5, Sec J, Pg 100 – Forestry &amp; Wildlife</b>	Assist 5-10 landowners with damage claims or shooting permits.	<i>5 damage claims assisted</i>
--	--	---------------------------------

- *Urban*

<b>Urban issues</b>		
---------------------	--	--

- *Watershed*

<b>Watershed Protection. LWRM CH.5 Sec. G, Pg 96 – Establish programs to make additional funds available for NPS abatement.</b>	Apply for and secure GLRI Grant Funds in a Waupaca County 9 Key Element Planned Watershed. Apply for Large Scale TRM Funds in a targeted watershed.  Finish work on a fifth 9 Key Element Watershed Plan in the Pigeon Lake/River WS.	<i>Applied for GLRI Grant</i>  <i>Received \$50,000 planning grant for 9KE / NWQI Watershed plan</i>  <i>Finished 9KE (NWQI) plan in Pigeon Watershed (three HUC 12)</i>
---	--	--

- *Other*

<b>Program Evaluation &amp; Monitoring. LWRM CH.5 Sec. H, Pg 97 – Program Evaluation &amp; Monitoring strategy.</b>	Report to county board, DATCP, DNR. Meet with lake districts and associations. Conduct select stream monitoring with county funds. File TRM & NOD Grant reports. Coordinate with DNR on Pre/Post project stream sampling.	<i>Annual County Board Report</i> <i>3 Lake District/association meetings</i> <i>6 sites sampled, 6 times each, total 36</i> <i>2 TRM Grant Reports</i>
<b>Information &amp; Education. LWRM CH.5 Sec, K, Pg 103 - Information &amp; Education Strategy</b>	Conduct 5th Grade Conservation Field Days. Provide RC&D contracted groundwater education to schools. Yearly department newsletter. Staff speak at 3-5 events regarding conservation.	<i>1 Fifth Grade Field Day</i> <i>Staff spoke at 2 events</i>

**WAUPACA COUNTY 2025 ANNUAL WORK PLAN  
LOCALLY-IDENTIFIED PRIORITIES**

<p><b>Permits issued or obtained in connection with practices installed. LWRM CH.5, Sec. B, Pg 76- Stormwater Imp. &amp; Sec. E, Pg 86- Permit/Ord. Admin. Farmland Preservation</b></p>	<p>Issue 2-5 manure storage permits. Obtain all necessary WRAPP Stormwater Permits for c/s projects. Obtain Cultural Resources Certification. Assist current AEA landowners in implementing 2-8 new FP agreements in the two current AEA's.</p>	<p><i>2 permits issued / obtained</i></p> <p><i>5 FP agreements signed</i></p>
<p><b>Obtain funding to meet all goals.</b></p>	<p>Apply for 1 or more DNR TRM Grants Apply for 1 or more NOD Grants Apply for GLRI funding. Assist NRCS with 5-10 EQIP applications Apply for River Planning Grant</p>	<p><i>3 funding sources applied for and 2 received</i></p> <p><i>Assisted NRCS with 5 applications</i></p>
<p><b>Land &amp; Water Resource Management Planning</b></p>	<p>Implement the 2022-2031 Waupaca County LWRM Plan</p>	<p><i>1 Report to DATCP</i></p>

Table 2: Planned activity related to permits and ordinances

Permits and Ordinances	Plans/application reviews anticipated	Permits anticipated to be issued
Feedlot permits	N/A	0
Manure storage construction and transfer systems	1-10	1
Manure storage closure	1-2	2
Livestock facility siting	N/A	0
Nonmetallic/frac sand mining	N/A	0
Stormwater and construction site erosion control	3-5	0
Shoreland zoning	N/A	0
Wetlands and waterways (Ch. 30)	1-3	0
Other		

**WAUPACA COUNTY 2025 ANNUAL WORK PLAN  
LOCALLY-IDENTIFIED PRIORITIES**

Table 3: Planned inspections

Inspections	Number of inspections planned
Total Farm Inspections	25
For FPP	25
For NR 151	5
Animal waste ordinance	5
Livestock facility siting	N/A
Stormwater and construction site erosion control	N/A
Nonmetallic mining	N/A

Table 4: Planned outreach and education activities

Activity	Number
Tours	4
Field days	4
Trainings/workshops	20
School-age programs (camps, field days, classroom)	5
Newsletters	1
Direct Mailings(25-150 each)	6
News release/story	2

Table 5: Staff Hours and Expected Costs (staff can be combined or listed individually)

Staff/Support	Hours	Costs
<i>County Conservationist</i>	2080	<i>\$120,000</i>
<i>Technicians(4.0)</i>	8320	<i>\$432,000</i>
<i>Agronomist</i>	2080	<i>\$108,000</i>
<i>Support Staff</i>	686	<i>\$22,000</i>
Independent contractor	2080	<i>\$96,000</i>
<b>Cost Sharing</b> (can be combined)		
<i>DATCP Bonding</i>	<i>N/A</i>	<i>\$65,000</i>
<i>DATCP SEG</i>	<i>N/A</i>	<i>\$100,000</i>
<i>MDV</i>	<i>N/A</i>	<i>\$25,000</i>
<i>DNR-TRM</i>	<i>N/A</i>	<i>\$500,000</i>
<i>NRCS EQIP</i>	<i>N/A</i>	<i>\$500,000</i>
<i>GLRI</i>	<i>N/A</i>	<i>\$200,000</i>
<i>County</i>	<i>N/A</i>	<i>\$25,000</i>

**WAUPACA COUNTY 2026 ANNUAL WORK PLAN**  
**LOCALLY-IDENTIFIED PRIORITIES**

Table 1: Planned activities and performance measures by category

<p style="text-align: center;">CATEGORY (goal and objective from LWRM plan can be added in each category)</p>	<p style="text-align: center;">PLANNED ACTIVITIES WITH BENCHMARKS If applicable identify focus areas, e.g. HUC 12 watershed code (examples of types of “planned activities” in italics)</p>	<p style="text-align: center;">PERFORMANCE MEASUREMENTS (examples in italics)</p>
<p>• <i>Cropland</i></p>		
<p><b>Farm inspections to implement state performance standards and prohibitions or TMDL goals.</b>  <b>LWRM CH. 5, Sec. A, Pg 72- Ag. Perf. Stnds. Implementation</b></p> <p><b>Cropland conservation practices installed to implement state performance standards and prohibitions or address TMDL goals.</b>  <b>LWRM CH. 5, Sec. A, Pg 72- Ag. Perf. Stnds. Implementation</b></p> <p><b>Maintain and promote better nutrient management plans. LWRM CH. 5, Sec. A, Pg 72, Sec. E, Pg 86.</b></p> <p><b>Facilitate and manage grant for Upper Fox-Wolf Basin Demonstration Farm Network to promote soil health and field BMP’s through Waupaca County and the UF-W Basin.</b></p> <p><b>Cropland conservation practices installed to implement TMDL goals, 9KE Plan goals and/or state performance standards.</b></p>	<p>Conduct 25 farm inspections &amp; document compliance status for new or existing FPP participants in 10 Townships with FP zoning. Make 3-10 offers of cost share for Nutrient Management Plans in accordance with NR 151.07, NR 151.09 &amp; Waupaca CH 51</p> <p>Install 5-10 gully erosion control practices. Implement 3-10 new NM plans through farmer training sessions, staff training, FP or cost sharing.</p> <p>Conduct 20 or more Individual Farmer Training Sessions or updates. Review 50-75% of incoming NMP’s (~150) as time allows and work with agronomists/landowners to correct issues. Increase County area covered by NMP by 1-2% per year</p> <p>Implement Demo Farm Network with 17 farms throughout UF-W Basin. Host Demo field days, Farmer roundtables, share soil health information, provide new opportunities for soil health and WQ.</p> <p>Install 4000 acres of cover crop or no-till practices using Large Scale TRM funds, GLRI funds, DATCP funds. Install 5-10 acres of harvestable buffers using Large Scale TRM funds or County ARPA funds.</p>	<p><i>Type and units of practice(s) installed</i>  <i>Amount of cost-share dollars spent</i>  <i># lbs of sediment reduced (using STEPL or SNAP+)</i>  <i># lbs of P reduced (using STEPL or SNAP+)</i>  <i># acres of cropland in compliance with a performance standard</i>  <i># of FP Certificates issued</i>  <i># of Nutrient Management Plans received</i>  <i># of Nutrient Management Plans reviewed</i></p> <p><i># of soil health or crop BMP acres</i>  <i># of Field Day events held in County or Basin</i>  <i># of producers reached for educational purpose</i>  <i># of non producers reached for educational purpose</i></p> <p><i># lbs of sediment reduced (using STEPL)</i>  <i># lbs of P reduced (using STEPL)</i>  <i># of soil health or crop BMP acres</i></p>

**WAUPACA COUNTY 2026 ANNUAL WORK PLAN  
LOCALLY-IDENTIFIED PRIORITIES**

• *Livestock*

<p><b>Farm inspections to implement state performance standards and prohibitions or TMDL Goals</b> LWRM CH. 5, Sec. A, Pg 72- Ag. Perf. Stnds. Implementation</p> <p><b>Livestock facility conservation practices installed to implement state performance standards and prohibitions or TMDL goals.</b> LWRM CH. 5, Sec. A, Pg 72- Ag. Perf. Stnds. Implementation</p>	<p>Conduct 25 farm inspections &amp; document compliance status for new or existing FPP participants in 10 Townships with FP zoning. Conduct 1-10 farm inspections outside FP areas that have NR 151 compliance issues.</p> <p>Install agricultural BMPs to reduce animal waste (phosphorous) runoff as identified by inventory or complaint. Design &amp; implement 1-3 large agricultural waste and/or containment runoff systems</p>	<p><i>Type and units of practice(s) installed</i> <i>Amount of cost-share dollars spent</i> <i># lbs of sediment reduced (using BARNY or STEPL / PLET)</i> <i># lbs of P reduced (using BARNY or STEPL / PLET)</i> <i># of livestock facilities in compliance with a performance standard</i> <i># of FP Certificates issued</i></p>
---	---	--

• *Water quality*

<p><b>Protect water quality through CREP.</b> LWRM CH. 5, Sec. A, Pg 72- Ag. Perf. Stnds. Implementation</p> <p><b>Promote Groundwater awareness.</b> LWRM CH. 5, Sec. D, Pg 84- Groundwater&amp; Karst Concerns</p> <p><b>Lake and Stream Protection.</b> LWRM CH. 5, Sec F, Pg 89 Lake &amp; Stream Protection</p> <p><b>Start inventory of unused manure storage structures in county per Waupaca CH 51.</b></p>	<p>Implement 2-4 CREP Contracts with assistance from NRCS/FSA.</p> <p>Follow up the 2024 private well testing program, using ARPA funds, with landowners in areas that had high nitrates. This was delayed from 2025.</p> <p>Implement 5-10 DNR Healthy Lakes Grant Projects Apply for/Implement DNR Healthy Lakes Grant Program on 1-10 sites. Continue coordinating/monitoring Citizen Monitoring efforts on 20 stream sites and 2 lakes.</p> <p>Inspect 1-5 structures and offer c/s if they need to be closed.</p>	<p><i>Type and units of practice(s) installed</i> <i>Amount of cost-share dollars spent</i> <i># lbs of sediment reduced (using CREP EBR)</i> <i># lbs of P reduced (using CREP EBR)</i> <i># of CREP Contracts implemented</i> <i># of Wells Sampled</i></p>
---	--	---

• *Forestry*

<p><b>Encourage forestry, habitat and tree planting.</b> LWRM CH. 5, Sec J, Pg 100 – Forestry &amp; Wildlife</p>	<p>Sell 35,000 trees through County Tree Sale. Promote EQIP forestry practices.</p>	<p><i>Type and units of practice(s) installed</i> <i>Amount of cost-share dollars spent</i> <i># of trees sold</i> <i># Landowner contacts</i></p>
--	---	--

**WAUPACA COUNTY 2026 ANNUAL WORK PLAN  
LOCALLY-IDENTIFIED PRIORITIES**

<ul style="list-style-type: none"> <li><i>Invasive</i></li> </ul>		
<b>Assist landowners with Identification &amp; Elimination of AIS. LWRM CH. 5, Sec F, Pg 89 Lake &amp; Stream Protection. Waupaca County AIS Plan.</b>	Continue Waupaca County AIS Plan activities as applicable. Financially support Golden Sands RC&D as our AIS contractor.	<i>Number of surveys completed</i> <i>Number of control efforts implemented/sites treated</i>
<ul style="list-style-type: none"> <li><i>Wildlife</i></li> </ul>		
<b>Administer WDACP (Ag. Damage program &amp; Venison Donation) LWRM CH.5, Sec J, Pg 100 – Forestry &amp; Wildlife</b>	Assist 5-10 landowners with damage claims or shooting permits.	<i># of damage claims assisted</i>
<ul style="list-style-type: none"> <li><i>Urban</i></li> </ul>		
<b>Urban issues</b>		
<ul style="list-style-type: none"> <li><i>Watershed</i></li> </ul>		
<b>Watershed Protection. LWRM CH.5 Sec. G, Pg 96 – Establish programs to make additional funds available for NPS abatement.</b>	Apply for and secure GLRI Grant Funds in a Waupaca County 9 Key Element Planned Watershed. Apply for Large Scale TRM Funds in a targeted watershed.	<i># Grant secured</i> <i>Modeling completed</i> <i>Number of partner contacts made</i> <i>Information system/tracking developed</i> <i>Number of partnership development activities accomplished</i> <i>Number of watershed plans completed</i>
<ul style="list-style-type: none"> <li><i>Other</i></li> </ul>		
<b>Program Evaluation &amp; Monitoring. LWRM CH.5 Sec. H, Pg 97 – Program Evaluation &amp; Monitoring strategy.</b>	Report to county board, DATCP, DNR. Meet with lake districts and associations. Conduct select stream monitoring with county funds. File TRM & NOD Grant reports. Coordinate with DNR on Pre/Post project stream sampling.	<i>Number of meetings attended</i> <i>Number of sites sampled</i> <i>Number of reports made</i>
<b>Information &amp; Education. LWRM CH.5 Sec, K, Pg 103 - Information &amp; Education Strategy</b>	Conduct 5th Grade Conservation Field Days. Provide RC&D contracted groundwater education to schools. Yearly department newsletter. Staff speak at 3-5 events regarding conservation.	<i>Number of events hosted or attended</i>

**WAUPACA COUNTY 2026 ANNUAL WORK PLAN  
LOCALLY-IDENTIFIED PRIORITIES**

<p><b>Permits issued or obtained in connection with practices installed. LWRM CH.5, Sec. B, Pg 76- Stormwater Imp. &amp; Sec. E, Pg 86- Permit/Ord. Admin. Farmland Preservation</b></p>	<p>Issue 2-5 manure storage permits. Obtain all necessary WRAPP Stormwater Permits for c/s projects. Obtain Cultural Resources Certification. Assist current AEA landowners in implementing 2-8 new FP agreements in the two current AEA's.</p>	<p><i># of permits issued / obtained</i></p> <p><i># of FP agreements signed</i></p>
<p><b>Obtain funding to meet all goals.</b></p>	<p>Apply for 1 or more DNR TRM Grants Apply for 1 or more NOD Grants Apply for GLRI funding. Assist NRCS with 5-10 EQIP applications Apply for River Planning Grant</p>	<p><i># of funding sources applied for and received</i></p>
<p><b>Land &amp; Water Resource Management Planning</b></p>	<p>Implement the 2022-2031 Waupaca County LWRM Plan</p>	<p><i>Report to DATCP</i></p>

Table 2: Planned activity related to permits and ordinances

Permits and Ordinances	Plans/application reviews anticipated	Permits anticipated to be issued
Feedlot permits	N/A	0
Manure storage construction and transfer systems	1-10	4
Manure storage closure	1-2	2
Livestock facility siting	N/A	0
Nonmetallic/frac sand mining	N/A	0
Stormwater and construction site erosion control	3-5	4
Shoreland zoning	N/A	0
Wetlands and waterways (Ch. 30)	1-3	2
Other		

**WAUPACA COUNTY 2026 ANNUAL WORK PLAN  
LOCALLY-IDENTIFIED PRIORITIES**

Table 3: Planned inspections

Inspections	Number of inspections planned
Total Farm Inspections	25
For FPP	25
For NR 151	5
Animal waste ordinance	5
Livestock facility siting	N/A
Stormwater and construction site erosion control	N/A
Nonmetallic mining	N/A

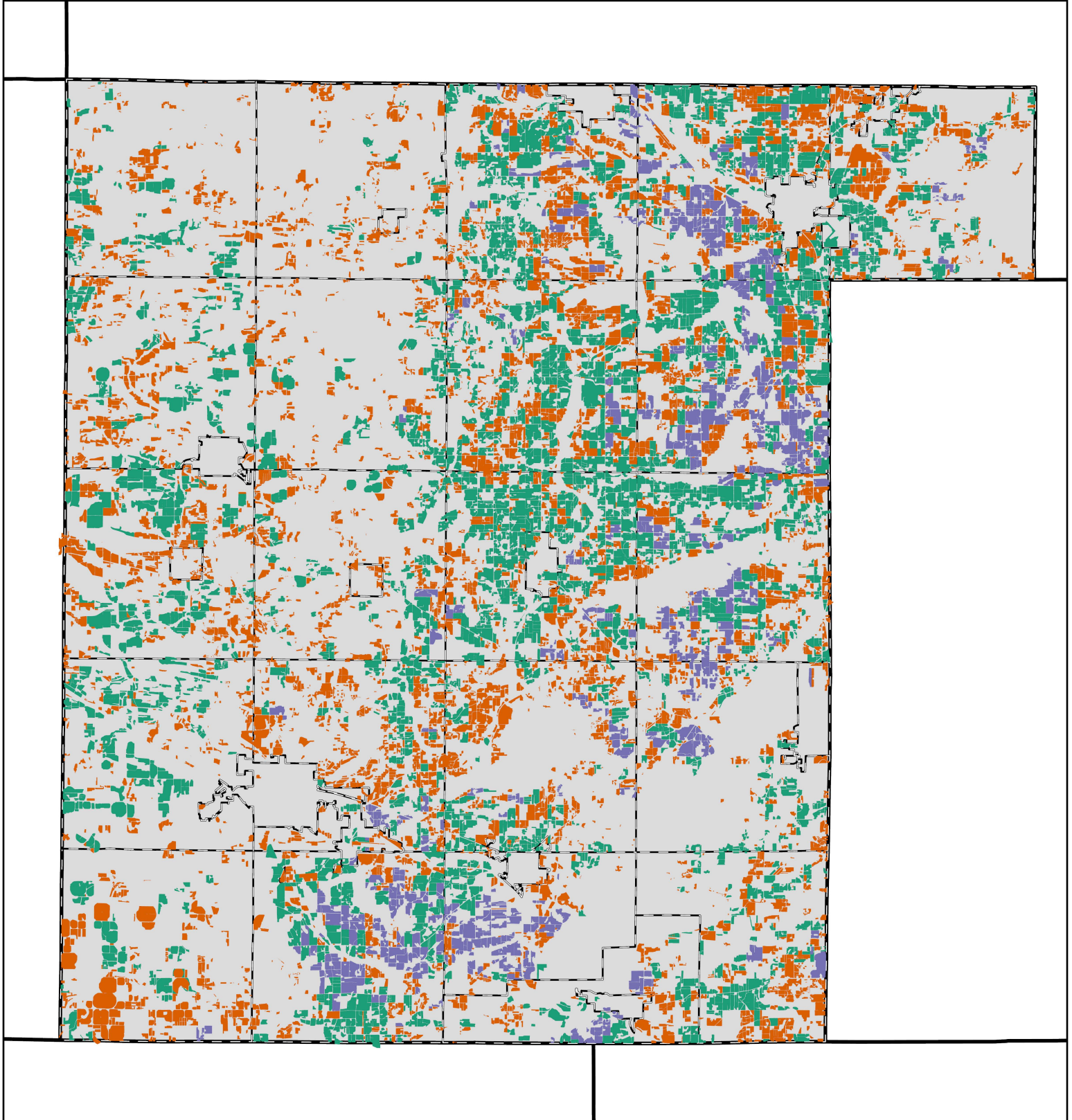
Table 4: Planned outreach and education activities

Activity	Number
Tours	4
Field days	4
Trainings/workshops	20
School-age programs (camps, field days, classroom)	5
Newsletters	1
Direct Mailings(25-150 each)	6
News release/story	2

Table 5: Staff Hours and Expected Costs (staff can be combined or listed individually)

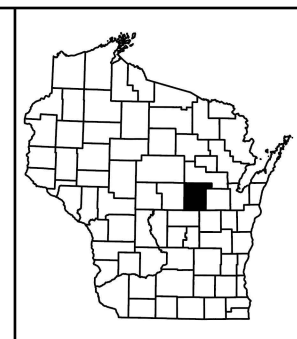
Staff/Support	Hours	Costs
<i>County Conservationist</i>	2080	<i>\$124,000</i>
<i>Technicians(4.0)</i>	8320	<i>\$444,000</i>
<i>Agronomist</i>	2080	<i>\$112,000</i>
<i>Support Staff</i>	686	<i>\$23,000</i>
Independent contractor	2080	<i>\$96,000</i>
<b>Cost Sharing</b> (can be combined)		
<i>DATCP Bonding</i>	<i>N/A</i>	<i>\$65,000</i>
<i>DATCP SEG</i>	<i>N/A</i>	<i>\$100,000</i>
<i>MDV</i>	<i>N/A</i>	<i>\$0</i>
<i>DNR-TRM</i>	<i>N/A</i>	<i>\$500,000</i>
<i>NRCS EQIP</i>	<i>N/A</i>	<i>\$500,000</i>
<i>GLRI</i>	<i>N/A</i>	<i>\$250,000</i>
<i>County</i>	<i>N/A</i>	<i>\$25,000</i>

# Waupaca County - Nutrient Management

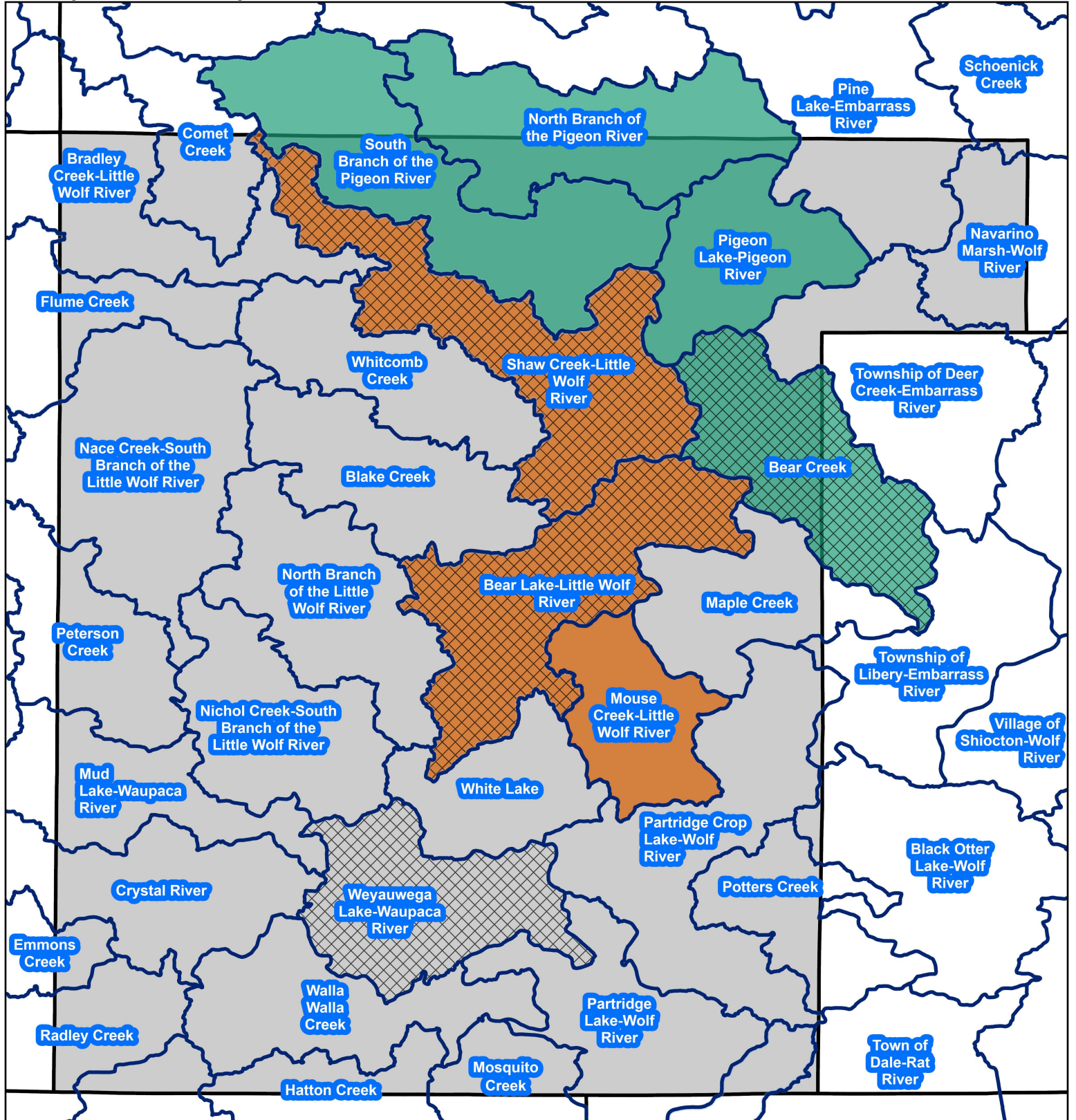


-  Fields Covered by NRCS 590
-  WI DNR WPDES (CAFO) farms
-  Fields not covered by Nutrient Management
-  Municipal\_Boundaries
-  WI County Boundaries
-  Waupaca County

2025 statistics:  
57,844.4 Acres covered in NRCS 590 plans  
20,480.9 Acres covered in WPDES (CAFO) plans  
112 plans prepared by CCA  
33 plans prepared by NMFE farms



# Waupaca County - Status of Watershed Plans and Grants



Active Nine Key Element Plan



Active GLRI (Expected for fall 2026)



Active TRM



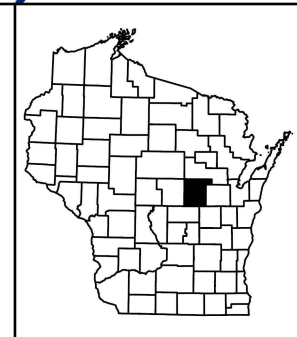
Watershed Boundaries - HUC12



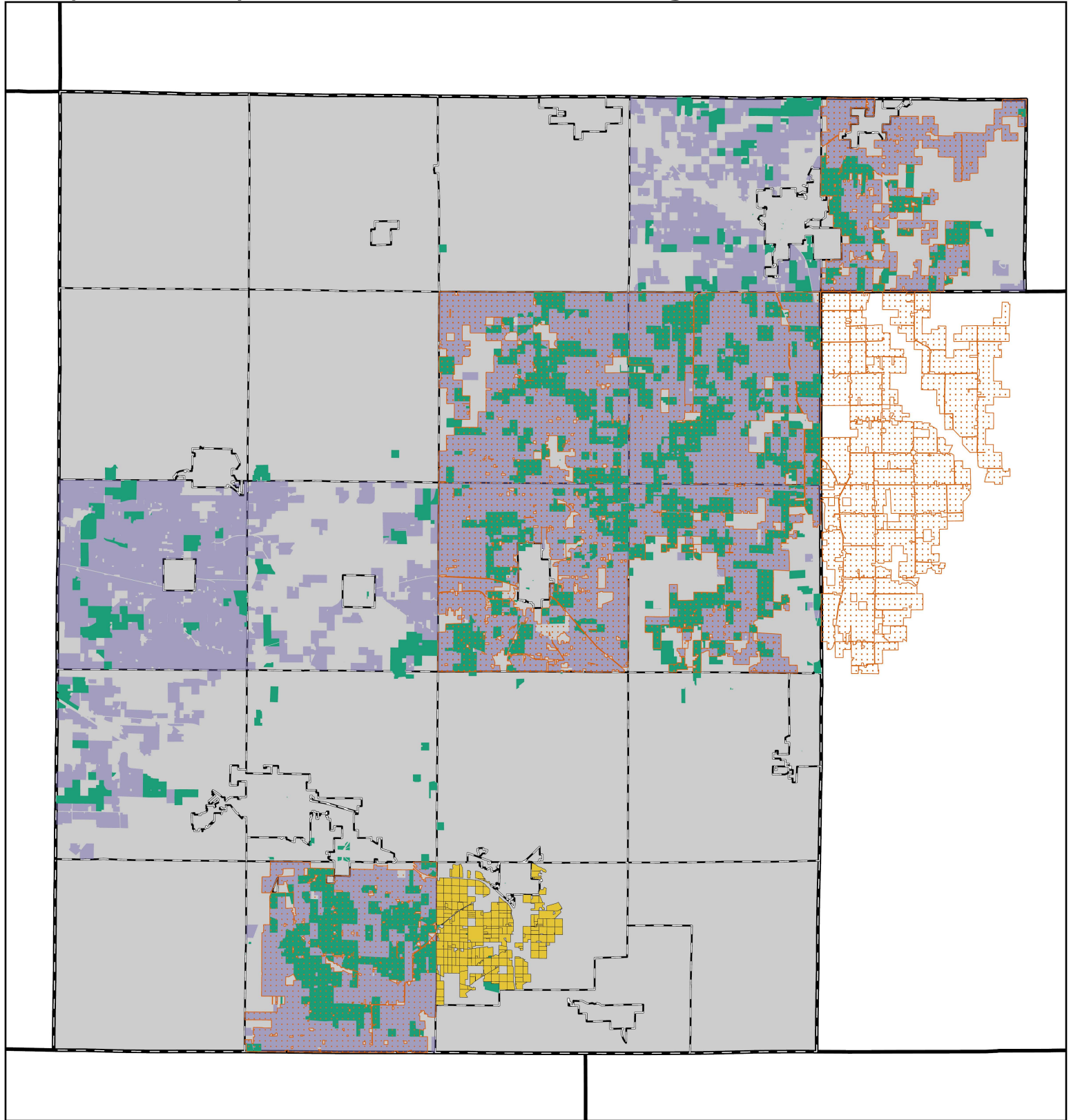
WI County Boundaries



Waupaca County

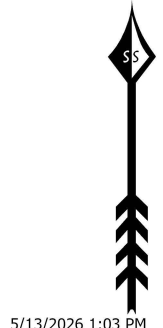
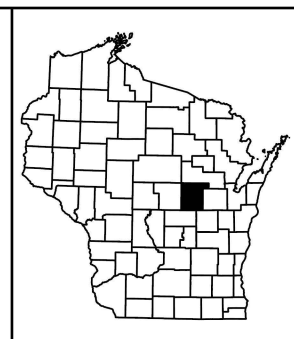


# Waupaca County - Farmland Preservation Program

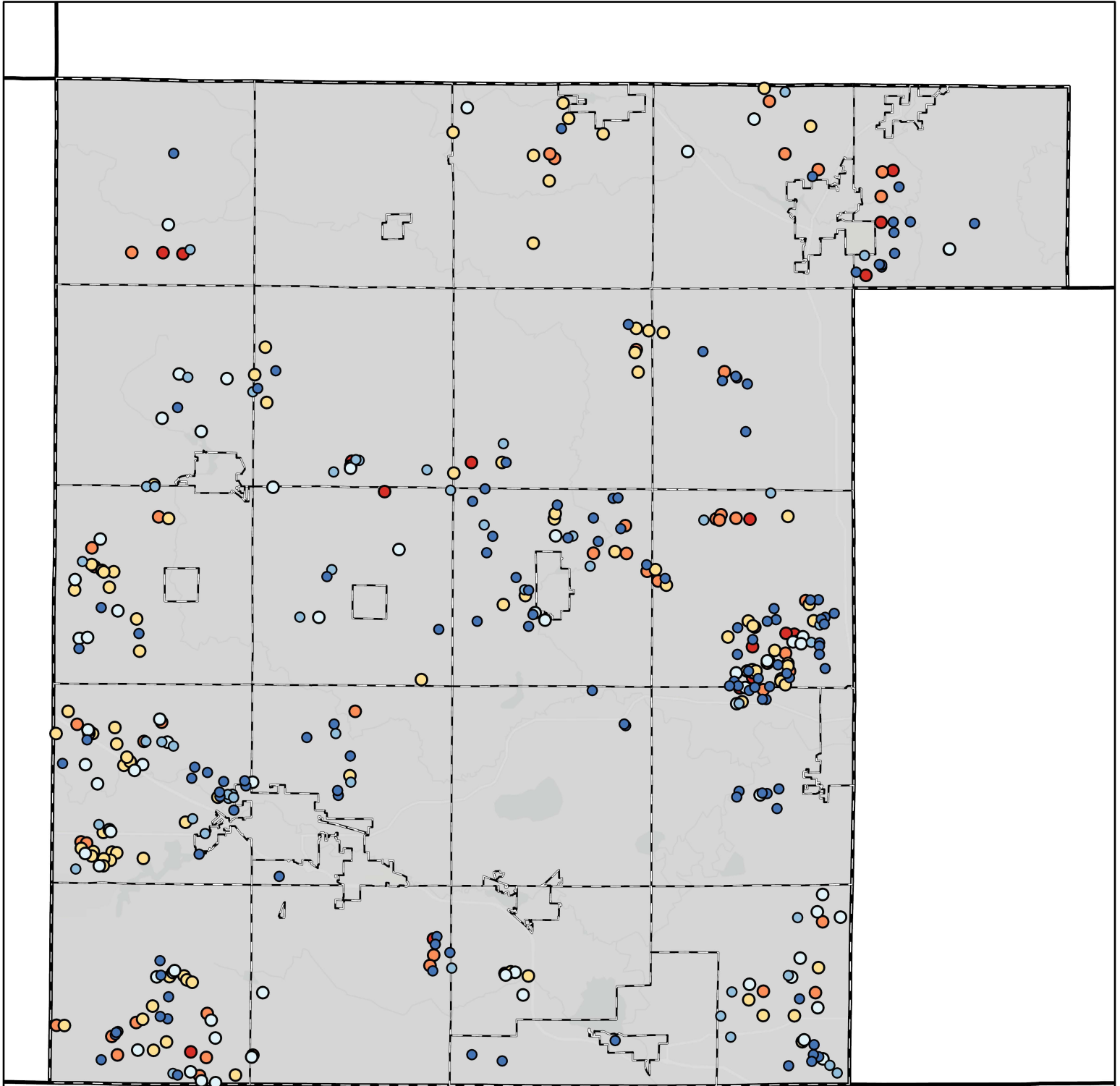


- Farmland Preservation Program Eligible Areas
- FPP Active Participants (includes commonly owned parcels outside of FP areas)
- FPP Addition 2026
- Three Rivers - AEA (shared with Outagamie County)
- Farming Forward AEA
- Municipal\_Boundaries
- Waupaca County
- WI County Boundaries

34,547.3 Acres certified for FP zoning tax credit claims  
 7,794.2 Acres certified for FP zoning and AEA tax credit claims  
 42,341.5 Acres inspected for commonly owned land  
 201 Active Participants, 29 Active AEA agreements

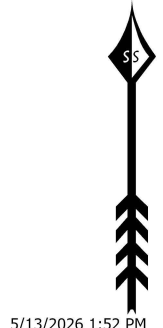
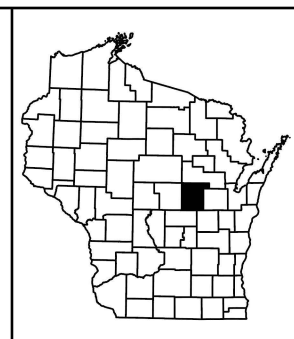
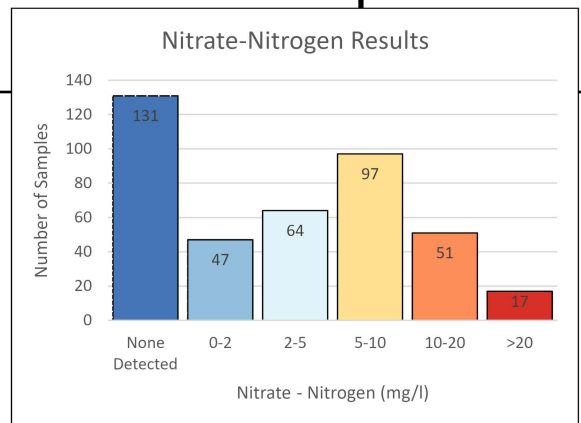


# Waupaca County Private Well Sampling Nitrate Results 2024



## Nitrate Concentrations (mg/l)

- 0
- >0 - 2
- >2 - 5
- >5 - 10
- >10 - 20
- >20



**CORRESPONDENCE/MEMORANDUM** \_\_\_\_\_ **State of Wisconsin**

**DATE:** June 2, 2026

**TO:** Land and Water Conservation Board Members and Advisors

**FROM:** Jenn Chakravorty, DATCP  
Resource Management Section,  
Bureau of Land and Water Resources

**SUBJECT:** Five Year Review of the *Waushara County Land and Water Resource Management Plan*

**Recommended Action:** This is an action item. The LWCB should determine whether the county has met the LWCB's criteria for a five-year review of a LWRM plan approved for ten years. If the LWCB makes a formal determination that the county has failed to meet these criteria, DATCP will automatically modify its order to terminate approval of the county's plan effective December of this year.

**Summary:** The Waushara County Land and Water Resource Management plan has been approved through December 31, 2031, contingent on a five-year review conducted prior to December 31, 2026. In advance of the five-year review, Waushara County has completed a DATCP approved form designed to implement the LWCB's reference document dated October 27, 2021, and the criteria for conducting a five-year review. The county has provided written answers to four questions regarding past and future implementation, has provided the required work planning documents, and has appropriately involved the Land Conservation Committee.

**Materials Provided:**

- Completed Five Year Review Form
- 2025 Annual Workplan with Accomplishments
- 2026 Annual Workplan

**Presenter(s):** Josh Saykally, Waushara County Conservationist  
TBD, Land, Water and Education Committee Chair



Land and Water Conservation Board  
County Land and Water Resource Management Plan  
Five Year Review of LWRM Plans

County: Waushara

**Implementation Covering Past Five Years and Future Directions**

Answer these four questions in writing (not to exceed 4 pages)

1. Provide a representative number of accomplishments that can be directly traced to activities identified in multiple work plans. For each accomplishment, explain how the planning process helped the county achieve its outcome, including planning adjustments that helped better target county activities.

Waushara County Land Conservation has implemented county, state, and federal programs over the last 5 years. Funding programs that Waushara County has used in the last five years for Best management practices include: County WQIP(Water Quality Improvement Program), DATCP, WDNR, Great Lakes Sediment and Nutrient Reduction Program (GLSNRP). Waushara County works with Partners for Fish and Wildlife on BMP's. Waushara County Staff aided in the design and installation of the following BMP's over the last five years:

Wetland Restorations - 5.65 Acres  
Shoreline/streambank protection - 1,500 Ln ft  
Prescribed Grazing - 109 Acres  
Native Praire Restoration - 248.5 Acres  
Nutrient Management - 1,783 Acres  
Cover Crops - 918 Acres  
No-Till - 676 Acres  
Livestock Fencing - 6,980 Ft  
Oak Savanna Restoration - 17.1 Acres  
Windbreak - 6980 ft  
Well Testing - spent \$3,910.57  
Total Money spent on BMP's - \$442,388.23

Waushara County began a well testing program to collect data from areas in the County where well test data was lacking. (2018-2021) 6 townships a year approximately 100 samples per year. After the County testing was completed we offered residents with a reverse osmosis cost share program (ARPA Funds), for wells that tested above 10 PPM. We continue to test approximately 13 well with complete homeowners packages, some wells due to high nitrates and others due to their proximity the solar farms and future solar fams. we are looking for a local commection to land use change and well water results. Wells are tested approximately every 15 monthe so that over the course of 4 testing cycles (5 years), there is a sample taken each season, Testing will continue as long as funding is available.

Waushara County administers the WDNR wildlife damage program.

In 2011 Waushara County Board approved a \$25,000 a years WQIP (Water Quality Improvement Program) to have a bigger budget to install more BMP's on the landscape. We limit the program to \$7,500 /landowner/year. We also use this money to increase cost sharing for 50% to 70% on DATCP non-agriculture projects, to increase landowner participatiojn for projects such as shorline protection and shoreline/streambank stabilization.

Waushara County is in its 2nd year being a partner with Upper Fox-Wolf Demo farm Network. The demo farm network is comprised of 15 farms in 10 participating County Land Conservation Departments and one lake association. Waushara County had 1 Farm join the Demo Farms Network in 2025.

Nine-key Element plans drafts were developed in 2021 for the Upper Fox River and Wolf River Basins by Winnebago Waterways, a Fox Wolf Watershed Alliance program, with assistance from Waushara County Land Conservation. It was determined that the highest Phosphorus delivering watershed is the White River Watershed, located in the south central part of Waushara County.

2. Identify any areas where the county was unable to make desired progress in implementing activities identified in multiple work plans. For each area identified, explain the work plan adjustments that were made to refocus planned activities. If no areas are identified, explain how the county was able to make progress in all the areas planned.

Each year there are examples where planned projects/practices in our work plan were not installed, these were due to landowner participation changing, or priorities changing throughout the year. We use a ranking sheet that to rank projects, to ensure that BMP's are installed in areas of resource concern. Many BMP's within Waushara Counties annual work plan our projects already in the initial planning process when our plan in developed. In addition to having expertise in designing and oversee installation of BMP's, as land conservation staff we must also be sales people, to sell conservation practices to farmers and landowners.

3. Describe how the county's work plans implement its priority farm strategy and the effectiveness of county actions implementing agricultural performance standards and conservation practices on farms. In particular, the county should describe outreach, farm inventories, and additional funds that were pursued to implement its strategy.

Waushara Counties Priority Farm Strategy - Farms would be considered "priority" will be determined by record review, onsite evaluations and complaints. Building relationships with farmers along with cost sharing is the most effective way to implement voluntary compliance with performance standards. Waushara County has always addressed conservation concerns on a voluntary or complaint driven process. Every avenue will be explored to bring a non-compliant landowner into compliance in a voluntary way. As a first step in voluntary compliance, Waushara County utilizes the information and education strategy to insure all landowners are aware of the performance standards and how to become compliant.

Building trust with farmers is the best way to get voluntary compliance, along with our information and education strategy and cost sharing, in most cases.

4. Provide representative examples that show changes in direction for work planning in the upcoming five years, with specific examples provided showing adjustments in planned activities in the county's most recent work plan.

We had a change in direction in 2024 when a agronomist was hired to work on the Climate Smart Grant through FWWA (Fox Wolf Watershed Alliance), and enroll farmers in cropping practices throught out the Fox Wolf Watershed Basin. Although the climate smart funding ended in early 2025, and funding for our staff position was lost, we kept the her on staff as our county agronomist.

Waushara County purchased a Esch no-till drill with ARPA funds to have a a no-till drill rental program. The idea is to have an affordable way for farmers to plant no-till soybeans, wheat and alfalfa/pasture and as well as cover crops following harvest. Waushara Counties afforadble rental program allows more acres planted to no-till and assists farmers in building soil health.

Waushara County is a member of FWWA exective committee. Land Conservation has also partnered with FWWA on a GLSNRP (Great lakes Sediment and Nutrient Reduction Program) on a project called Turning Field to Filters: A Waushara County Water Quality Project (2024-2029). This project will transition 83 acres of active marginal farmland, at 3 different sites, into permanent conservation through praire plantings, riparian buffers, ditch plugs and wetland restorations. The direction of Waushara County Land Conservation has been changing the last few years to more "soft practices" or cropping practices, and restoration of marginal farmland. In the past cost-share dollars have been used on manure storage and concrete barnyards. Waushara County is going away from cost-sharing manure storage. Reasons are the cost associated, just getting to expensive, and the family dairy's are disappearing in Waushara County.

Waushara County Land Conservation has a very good working relationship with Partners for Fish and Wildlife, a program through the US Fisha nd Wildlife services, we have worked with them the past few years sharing both technical servaice and cost share funds to help get more BMP's on the landscape.

## **Annual Work Plans**

Attach both of the following:

- a. The most current annual work prepared by the county.
- b. The work plan for the previous year that includes a column that identifies the progress in implementing the planned activities for that year.

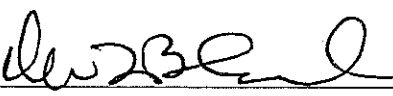
## **Board Review Process**

The goal of the review is not to fail counties. The board recognizes the dynamic nature of the planning process. Board members are interested in how counties tackle priorities over time and how they respond to changing conditions in pursuing their priorities. The board will evaluate a county's planning and implementation based on how well the county balances and prioritizes the following: agricultural performance standards, other state priorities (impaired waters, FPP checks), and local priorities. When needed, the Board will provide constructive support to

counties to improve the quality of their planning. Counties have the option to prepare a brief presentation to illustrate their successes and future priorities.

**Land Conservation Committee Notification**

The LCC was provided a completed copy of these questions (including attachments) on:  
4/1/2026

Signature of Authorized Representative:  Date: 4/1/26  
(e.g. County Conservationist, LCC chair)

Send completed questionnaire and attachments to:  
[jennifer.chakravorty@wisconsin.gov](mailto:jennifer.chakravorty@wisconsin.gov)

**Waushara County 2025 ANNUAL WORK PLAN  
LOCALLY IDENTIFIED PRIORITIES**

Table 1: Planned activities and performance measures by category

CATEGORY (goal and objective from LWRM plan can be added in each category)	PLANNED ACTIVITIES WITH BENCHMARKS If applicable identify focus areas, e.g. HUC 12 watershed code (examples of types of “planned activities” in italics)	PERFORMANCE MEASUREMENTS (examples in italics)
<ul style="list-style-type: none"> <li><i>Cropland</i></li> </ul>		
<b>Cropland, soil health and/or nutrient management</b>	<b>250 Acres signed to SEG CSA’s for Nutrient Management Planning</b> <b>250 Acres signed to SEG CSA’s for Cover Crops</b> <b>10 Acres Prairie Restoration</b> <b>700 Acres of Cover Crops and No till, 2 Year agreements (Edge dairy Grant)</b> <b>2300 ft Windbreak plantings</b>	122 Acres NM Planning 289 Acres Cover Crops, 159 Acres signed carried over to 2026 148 Acres of No Till \$26,855 SEG Money allocated 18 Acres Prairie Restoration 26.2 tons of sediment reduced (PLET) 62.2 lbs. of P reduced (PLET) 0 ft of windbreak plantings – Landowner did not want implement Nutrient Management Edge Dairy /Climate Smart Grant Terminated
<ul style="list-style-type: none"> <li><i>Livestock</i></li> </ul>		
<b>Livestock</b>	<b>8 Acres of managed grazing</b>	0 lbs. of sediment reduced (PLET) 8.98 lbs. of P reduced (PLET) 8 Acres of managed grazing installed
<ul style="list-style-type: none"> <li><i>Water quality</i></li> </ul>		
<b>Water quality/quantity</b> (other than activities already listed in other categories)	<b>Administer County long- term well testing Program.</b> <b>Administer County Solar Farm well testing program.</b> <b>125 Ln Ft Shoreline re-vegetation.</b> <b>2.5 Acres of Buffer strips along streams in TMDL watershed</b>	0 of wells sampled in 2025 seasonal testing 15 Months intervals Jan 2026 Testing 106 ft Shoreline revegetation lbs. of sediment reduced (PLET) lbs. of P reduced (PLET) .58 lbs. of P saved from entering buffered stream (PLET) .27 lbs. of sediment saved from entering buffered stream (PLET) 2.25 Acres Buffer strips along
<ul style="list-style-type: none"> <li><i>Forestry</i></li> </ul>		
<b>Forestry</b>		10.9 Acres Prairie/Oak savannah
<ul style="list-style-type: none"> <li><i>Invasive</i></li> </ul>		
<b>Invasive species</b>	<b>Work with partners for outreach and control of aquatic/terrestrial Invasive species</b>	Golden Sands RC&D manages AIS program through DNR Grants applied for through counties
<ul style="list-style-type: none"> <li><i>Wildlife</i></li> </ul>		
<b>Wildlife-Wetlands-Habitat</b> (other than forestry or invasive species)	<b>Wetland restoration 2 acres</b> <b>Administer Wildlife damage program</b>	.5 Acres of wetland restored Administered Wildlife Damage Program

**Waushara County 2025 ANNUAL WORK PLAN  
LOCALLY IDENTIFIED PRIORITIES**

- *Urban*

<b>Urban issues</b>	<b>Stormwater Plans Construction site erosion control</b>	120 Construction Erosion Control Plans 43 Erosion Control Construction site inspections 11 stormwater plans written
---------------------	---	---

- *Watershed*

<b>Watershed strategies</b>	<b>Target Practices in TMDL Watersheds</b>	All Practices in TMDL Watersheds
-----------------------------	--	----------------------------------

- *Other*

<b>Other</b>	<b>Non-metallic mining reclamation review/plans Administer Edge Dairy Grant through FWWA</b>	14 Non-Metallic Mine plans reviewed 1 Non-Metallic Mine inspections Edge Dairy Grant Terminated
--------------	--	---

Table 2: Planned activity related to permits and ordinances

<b>Permits and Ordinances</b>	<b>Plans/application reviews anticipated</b>	<b>Permits anticipated to be issued</b>
Feedlot permits	0	0
Manure storage construction and transfer systems	0	0
Manure storage closure	0	0
Livestock facility siting	0	0
Nonmetallic/frac sand mining	1	0
Stormwater and construction site erosion control	100	100 - 120
Shoreland zoning	0	0
Wetlands and waterways (Ch. 30)	3	3 - 1
Other		

**Waushara County 2025 ANNUAL WORK PLAN  
LOCALLY IDENTIFIED PRIORITIES**

Table 3: Planned inspections

Inspections	Number of inspections planned
Total Farm Inspections	5 - 0
For FPP	0
For NR 151	5
Animal waste ordinance	0 - 1
Livestock facility siting	0
Stormwater and construction site erosion control	50 - 54
Nonmetallic mining	1 -

Table 4: Planned outreach and education activities

Activity	Number
Tours	1 - 1
Field days	1 - 0
Trainings/workshops	0
School-age programs (camps, field days, classroom)	1 - 1
Newsletters	1 - 1
Social media posts	25 - 22
News release/story	2 - 2

Table 5: Staff Hours and Expected Costs (staff can be combined or listed individually)

Staff/Support	Hours	Costs
County Conservationist	2080	\$106,000
Technician	2080	\$58,000
Agronomist	2080	\$67,000
Office support Staff	2080	\$60,000
<b>Cost Sharing (can be combined)</b>		
Bonding	N/A	\$43,500
SEG	N/A	\$25,000
County WQIP	N/A	\$25,000
Edge Dairy Grant	N/A	\$443,931

**Waushara County 2026 Annual Work Plan**  
Locally Identified Priorities

**Table 1:** Planned activities and performance measures by category

<b>CATEGORY</b> Goals and objectives from LWRM Plan can be added in each category <i>(examples in italics)</i>	<b>PLANNED ACTIVITIES WITH BENCHMARKS</b> If applicable, identify focus areas, e.g. HUC 12 watershed code <i>(examples of types of “planned activities” in italics)</i>	<b>PERFORMANCE MEASUREMENTS</b> <i>(examples in italics)</i>
<ul style="list-style-type: none"> <li>• <b>Cropland</b></li> </ul>		
<b>Cropland, soil health, and/or nutrient management</b> <i>Objective: Continue Agricultural performance standards Implementation and reduce soil &amp; wind erosion</i>	<i>Windbreak installation – 4,100 ft Nutrient Management Planning – 250 Acres Cover crops agreements – 500 Acres No-till agreements – 200 Acres Critical Area seeding – 20 Acres</i>	<i>Type and units of practice(s) installed Amount of cost-share dollars spent # lbs. of sediment reduced (PLET) # lbs. of P reduced (PLET)</i>
<ul style="list-style-type: none"> <li>• <b>Livestock</b></li> </ul>		
<b>Livestock</b> <i>Objective: Continue Agricultural performance standards Implementation and reduce soil &amp; wind erosion</i>	<i>20 Acres of Managed Grazing</i>	<i>Acres of managed grazing signed to cost share agreements. # lbs. of sediment reduced (PLET) # lbs. of P reduced (PLET)</i>
<ul style="list-style-type: none"> <li>• <b>Water quality</b></li> </ul>		
<b>Water quality and/or quantity</b> <i>Objective: Protect and enhance nearshore lake &amp; stream habitats including littoral, riparian, wetland, and nearby upland habitat.</i>	<i>Native Prairie Restoration – 50 Acres Long term/solar farm area - Groundwater testing Riparian Buffer Installation – 1 Acres Shoreline re-vegetation – 200 ft</i>	<i>Type and unit of practices installed # lbs. of sediment reduced (PLET) # lbs. of P reduced (PLET) Testing completed</i>
<ul style="list-style-type: none"> <li>• <b>Forestry</b></li> </ul>		
<b>Forestry</b> <i>Objective: Protect and enhance nearshore lake &amp; stream habitats including littoral, riparian, wetland, and nearby upland habitat.</i>	<i>Oak savanna Restoration – 7 Acres Tree Planting - cropland Restoration - 7 Acres</i>	<i>Number of acres of oak savanna restoration Number of Acres of tree Plantings Amount of cost-share dollars spent # lbs. of sediment reduced (PLET) # lbs. of P reduced (PLET)</i>

**Waushara County 2026 Annual Work Plan**  
Locally Identified Priorities

- Invasive species*

<b>Invasive species</b> <i>Objective: Protect water Quality on lakes and Streams</i>	<i>Partner with Golden Sands RC&amp;D for invasive species regional management</i>	
---	--	--

- Wildlife*

<b>Wildlife-Wetlands-Habitat</b> <i>Objective: Protect and enhance nearshore lake &amp; stream habitats including littoral, riparian, wetland, and nearby upland habitat.</i>	Wetland restorations – 3 Acre Administer Wildlife damage program Ditch Plug 1,000 ft	<i>Acres of wetland restored</i> <i>Wildlife damage program administered</i> <i># of feet of ditch plug</i>
--	--	---

- Urban*

<b>Urban issues</b> <i>Objective: Protect Surface waters from Construction Site Erosion &amp; non-metallic Mining Operations</i>	Stormwater plans written – 10 plans Construction site erosion control – 100 plans Non-Metallic mining reviews (14) and inspections (1-2)	<i>Number of Storm water plans written</i> <i>Number of construction site erosion control plans</i> <i>Number of non-metallic mines reviewed and inspected</i>
---	--	--

- Watershed*

<b>Watershed strategies</b>		
-----------------------------	--	--

- Other*

<b>Other</b>		
--------------	--	--

**Waushara County 2026 Annual Work Plan**  
Locally Identified Priorities

**Table 2:** Planned activity related to permits and ordinances

Permits and ordinances	Plans/application reviews anticipated	Permits anticipated to be issued
Feedlot permits	N/A	
Manure storage construction and transfer systems	3	3
Manure storage closure	0	0
Livestock facility siting	N/A	N/A
Nonmetallic/frac sand mining	14	14
Stormwater and construction site erosion control	125	N/A
Shoreland zoning	N/A	N/A
Wetlands and waterways (Ch. 30)	2	2
Other		

**Table 3:** Planned inspections

Inspections	Number of inspections planned
Total farm inspections	5
For FPP	0
For NR 151	5
Animal waste ordinance	2
Livestock facility siting	N/A
Stormwater and construction site erosion control	40
Nonmetallic mining	1-2

**Table 4:** Planned outreach and education activities

Activity	Number
Tours	0
Field days	1
Trainings/workshops	1
School-age programs (camps, field days, classroom)	2
Newsletters	0
Social media posts	20-25
News release/story	1-2

**Waushara County** 2026 Annual Work Plan  
Locally Identified Priorities

**Table 5:** Staff hours and expected costs (staff can be combined or listed individually)

<b>Staff/Support</b>	<b>Hours</b> <i>(2080 hours is full time)</i>	<b>Costs</b>
<i>County Conservationist</i>	2080	\$114,888
<i>Technician</i>	2080	\$66,738
<i>Agronomist</i>	2080	\$78,084
Administrative Assistant	1664	\$61,466
<b>Cost Sharing (can be combined)</b>		
<i>SWRM Structural grant</i>	N/A	\$50,000
<i>SWRM SEG grant</i>	N/A	\$40,000
<i>County WQIP</i>	N/A	\$25,000
<i>GLSNRP Grant</i>	N/A	\$119,400

DATE: May 19, 2026

TO: LWCB members and advisors

FROM: Jason Knutson, Wisconsin Department of Natural Resources (DNR)

SUBJECT: DNR Update, April - May 2026, for June LWCB meeting

### **Nutrient Loss Reduction Strategy Update**

Since last sharing details of the [Nutrient Loss Reduction Strategy](#) (NLRS) with the LWCB, the Wisconsin Department of Natural Resources' Office of Agriculture and Water Quality, in partnership with the Interagency Water Quality Workgroup (IWQW), has gathered extensive stakeholder input through a comprehensive engagement process to inform development of the new strategy. The IWQW, which includes representatives from the DNR, DATCP, NRCS, Wisconsin Land + Water, UW-Madison Extension and USGS, prioritized early and ongoing engagement with agricultural and conservation stakeholders.

As part of this effort, over 200 stakeholders, including farmers, private agronomists, conservation organizations, county land and water departments and Extension educators, were interviewed to gather perspectives on what is and is not working to minimize agricultural sources of nutrients lost to Wisconsin's surface and groundwater. Building on that input, 140 stakeholders participated in the Agriculture and Conservation Roundtable on Dec. 9, 2025, at the Food + Farm Exploration Center in Plover, where they identified practical actions and strategies to expand what is working and to address what is not working.

The results of this process are summarized in the [Stakeholder Engagement Summary Report](#), now available as a downloadable PDF on the [Nutrient Loss Reduction Strategy website](#). The IWQW is using this input to develop an updated strategy that builds on and accelerates the great work already happening across the state to reduce nutrient loss and improve water quality.

### **Standards Oversight Council Updates**

The Standards Oversight Council (SOC) and the DNR have finalized two DNR post-construction storm water technical standards related to adding aluminum-based coagulants to storm water wet detention ponds.

These standards provide criteria for the design, installation and maintenance for the following practices:

- [Technical Standard 1013 Flow-Weighted Coagulant Dosing Of Storm Water Wet Detention Ponds](#) provides a means of enhancing Total Suspended Solids (TSS) and Total Phosphorus (TP) reduction on an ongoing basis.
- [Technical Standard 1014 Episodic Aluminum-Based Coagulant Dosing For Maintenance Of Storm Water Wet Detention Ponds](#) provides an approach for

removing TSS and TP in the water column and reducing the potential from phosphorus export from pond sediments.

Note: Finalization of these technical standards does not create a requirement that all stormwater ponds utilize coagulants but rather provides information for those who opt to address TSS and TP with the approach. Information regarding permitting of the activities described in the technical standards will be provided at a later date.

### **Targeted Watershed Assessment – Four-Mile Creek Watershed**

Wood County LWCD, Portage County LWCD, DNR, Nepco Lake District, Petenwell and Castle Rock Stewards, farmers, Domtar (paper mill) and UWSP will be collaborating in a two-year watershed assessment of the Four-Mile Creek Watershed. This group will build off the 2023-24 DNR Targeted Watershed Assessment to fill data gaps and bring this very diverse group of partners to the table to discuss water quality concerns originating from NPS. This will address both municipal, residential and agricultural practices that increase phosphorus and nitrogen loading to this watershed and ultimately the Wisconsin River. Wood County is graciously contributing its remaining ARPA funds throughout the watershed, which lies mostly across county lines into Portage County. Wood and Portage County also applied for DNR Surface Water Grant monies to assist them with lab costs and flow monitoring to help develop a watershed nutrient budget, identify areas on the landscape that BMPs can be incorporated and build the partnership into a broader Producer Led Watershed. Some producers are actively participating already! We are very fortunate to have willing partners that understand the need to address watershed health to improve water quality for Lake Wazeecha, Lake Nepco and the Wisconsin River that will directly benefit the Wisconsin River TMDL.

I also want to mention that West District team leader, Anna Mares, and recently retired DNR Wisconsin River TMDL coordinator, Patrick Oldenburg, were instrumental with this project!

### **NR151 Progress And Resource Analysis (NPRA) Project**

The DNR's agricultural runoff programs and DATCP, WI Land + Water and UW are collaborating on a project to quantify statewide rates of compliance with the agricultural performance standards and prohibitions along with the resources needed to achieve full compliance. County Land Conservation staff are assisting with data collection and reporting throughout the summer. Project results are expected in the fall of 2026.

### **Targeted Runoff Management Grants & Urban Nonpoint Source & Storm Water Construction Grants**

Applications for 2027 Targeted Runoff Management Grants and Urban Nonpoint Source & Storm Water Construction Grants were due on April 15.

## Summary of 2027 Submitted Grant Application

Grant Type	Requested State Share	Number of Grant Applications Submitted
Large-Scale TRM	\$1,687,911	4
Small-Scale AG TRM	\$1,023,960	5
Small-Scale Urban TRM	\$715,887	4
UNPS-Construction	\$2,459,235	18
Total	\$5,886,993	31

### **Staffing Updates**

- Robert Wheeler recently started as the DNR SER nonpoint coordinator. Rob worked with both the Coconino County Sheriff's Office and the Yavapai County Sheriff's Office in Arizona. After leaving law enforcement, he transitioned into code enforcement and stormwater work in the Verde Valley area. For the past several years, he has worked as a stormwater specialist with the city of Waukesha.
- Jeremy Kleinsmith is DNR's new CAFO Specialist stationed in La Crosse. Jeremy previously managed grazing programs for the US Forest Service in Idaho.
- Phil Gruber is DNR's new CAFO specialist stationed in Wausau. Phil previously held a project position within the DNR's Drinking and Groundwater Program.
- Ben Mrdutt is DNR's new CAFO specialist covering Clark and Chippewa counties, working out of the Eau Claire Service Center. Ben previously worked as a regulatory specialist for the DATCP in the Bureau of Meat and Poultry.