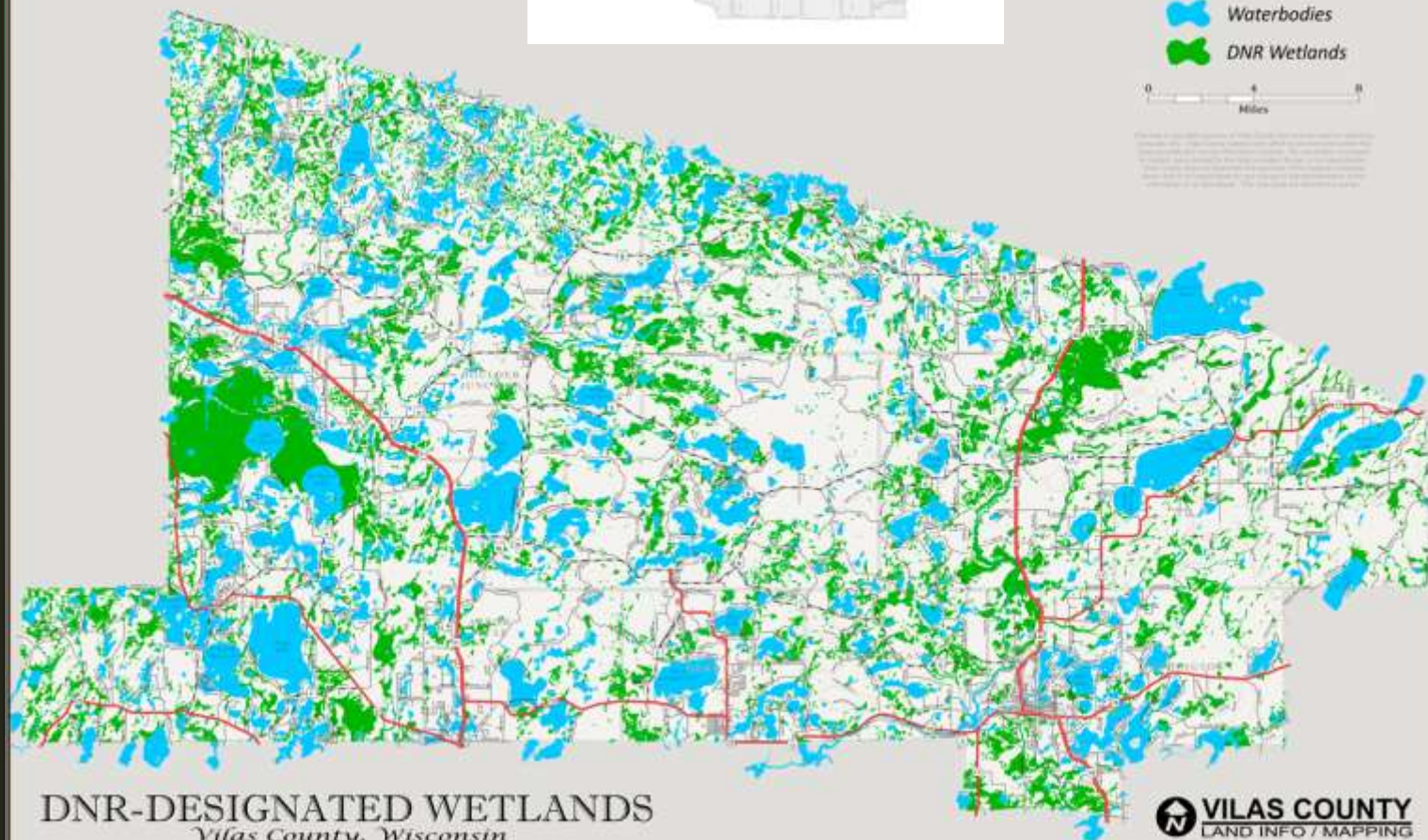


2025-2034

Land & Water Resource  
Management Plan

VILAS COUNTY



**DNR-DESIGNATED WETLANDS**  
*Vilas County, Wisconsin*

# 5(7) Yr Workplan Review (2018-2024)

## WORKPLAN REVIEW (2018-2024)

PRIORITY ACTIVITY	Benchmark	Accomplished	Next 2 Years
Cost Share BMP	39	37	8
Compliance Checks	42	43	10
Healthy Lakes BMP	44	30	20
Lake Monitoring	5 Lakes	5 Lakes	2 Lakes
Priority Farms	Expand Awareness		
Watershed Planning	1 HUC 12	1 HUC 12	1 HUC 12

# 2025-2034 Local Advisory Committee:

- Aaron Marti, WDNR
- Beckie Gaskill, WAV Volunteer
- Bill Marshall, Lincoln Board
- Cheryl Todea, Trees For Tomorrow
- Christina Anderson, WI Land + Water
- Frank Schroyer, Northwoods Landtrust
- Holly Tomlanovich, LWCC, Chair
- Helena Tiedmann, WDNR
- Jamie Van, Discovery Center
- Katie Hein, UW-Trout Lake
- Keith Montgomery, VCLRA
- Kevin Gauthier, WDNR
- Lauren Haydon, WDNR
- Lisa Trumble, WDATCP
- Mary Rasmussen, Organic Beef Farmer
- Michael Stinebrink, USDA - NRCS
- Richard Logan, LWCC
- Rosie Page, WHIP
- Sean Davison, WDNR
- Terry Kafka, WDNR
- Tracy Beckman, Lumberjack RC&D
- Carolyn Scholl, LWCD
- Cathy Higley, LWCD
- Quita Sheehan, LWCD
- Fred Heider, NCWRPC

# Resource Concerns

- Climate Change
- Soil Erosion
- Phosphorus / NPS
- Surface Water Quality
- Water Level Fluctuation
- Shoreland Health
- Aquatic Invasive Species
- Groundwater Quality / Quantity
- Wildlife Habitat
- Forest Fragmentation
- Road Salt Overuse
- Wetlands
- Terrestrial Invasive Species

# 2025-2034 Workplan Goals:

Goal 1: Increase Conservation Knowledge, Skills, & Stewardship Activity

Goal 2: Monitor and Protect Surface Water Resources

Goal 3: Monitor, Manage, and Protect Upland Resources

Goal 4: Monitor and Protect Groundwater Resources

Goal 5: Protect the County's Resources with Planned Strategies

# 2025-2029 Workplan Highlights:

- G1: Expand Stream Monitoring (WAV); Expand “Producer” Awareness; Expand online training modules
- G2: Phosphorus Modeling; Assess Culverts on Forestland; Install BMPs
- G3: Review Nutrient Mngt Plan; Plan for future TIS; Increase diversity in native plantings
- G4: Monitor groundwater near septage spreading sites; PFAS testing
- G5: Protect Wild Rice; Develop strategies for future Lake Protection; Improve habitat for gamefish; Protect undeveloped Forestland

# Planning for Climate Change

Protection of high-quality water resources

Game Fish Habitat Improvement on target lakes

Watershed Protection Plans for healthiest watersheds (9KE)

Culvert assessments to help municipalities to fix issues and reduce flooding potential

Research & Guidance to benefit all counties in LWRMP  
re: Lake Protection



Questions?

