

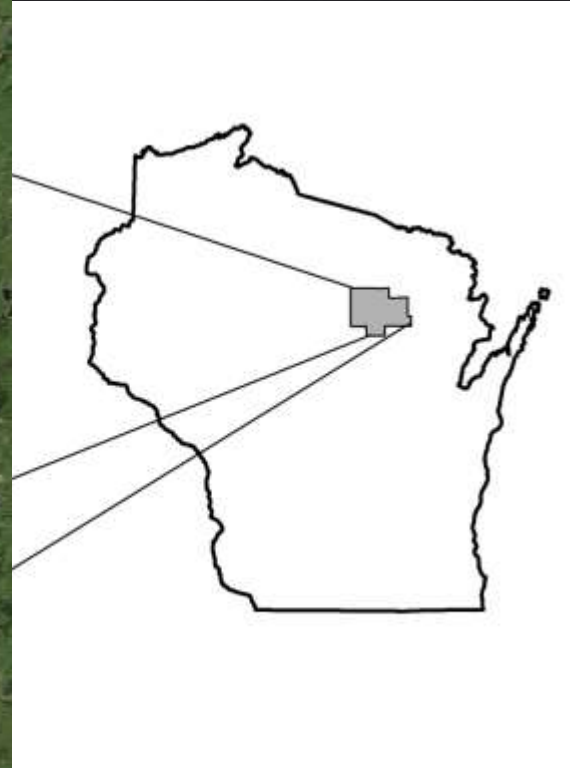
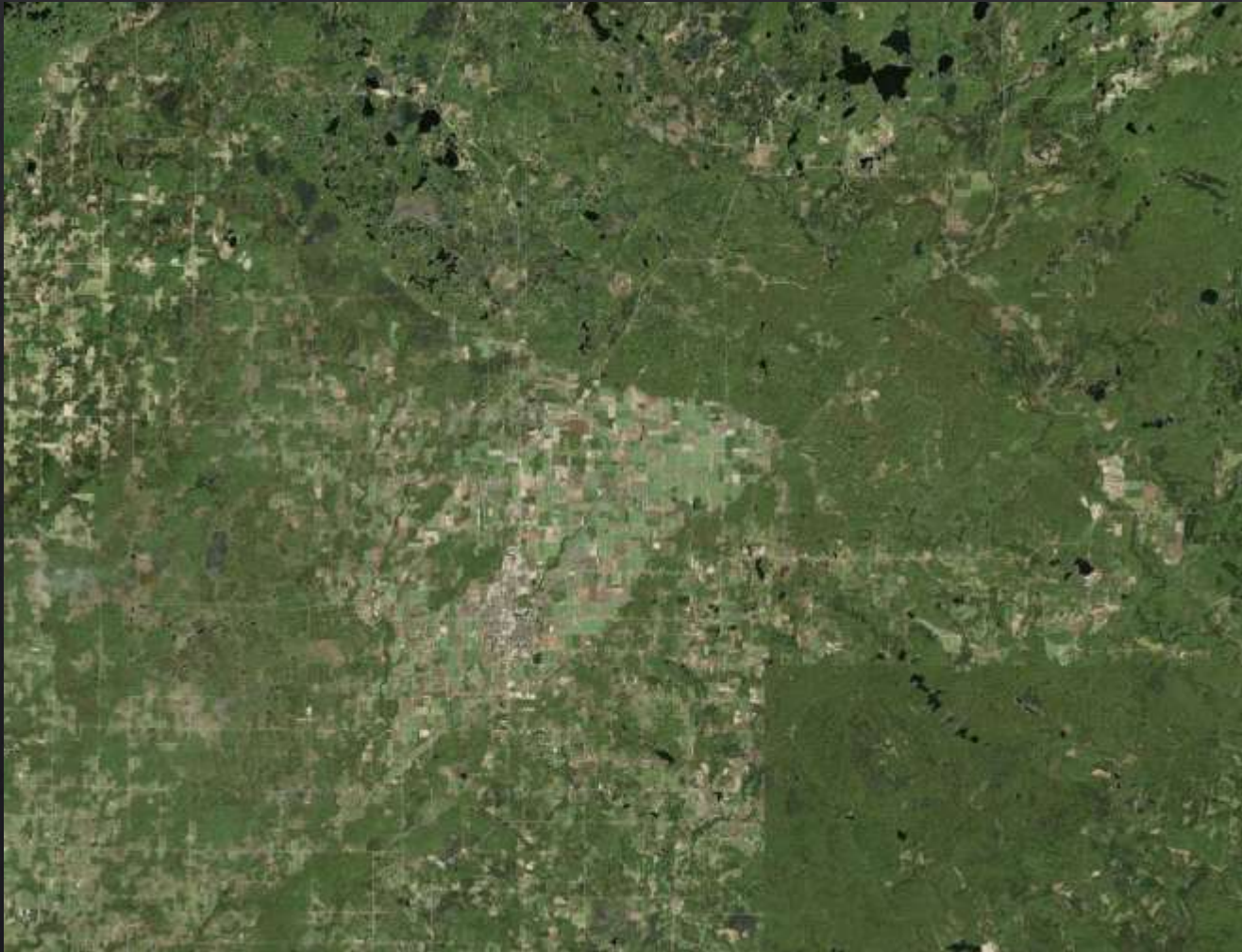
Langlade County Land and Water Resource Management Plan

2025-2034

Our mission is to promote awareness, provide management, improvement, assistance, implementation and preservation of the natural resources found in Langlade County.



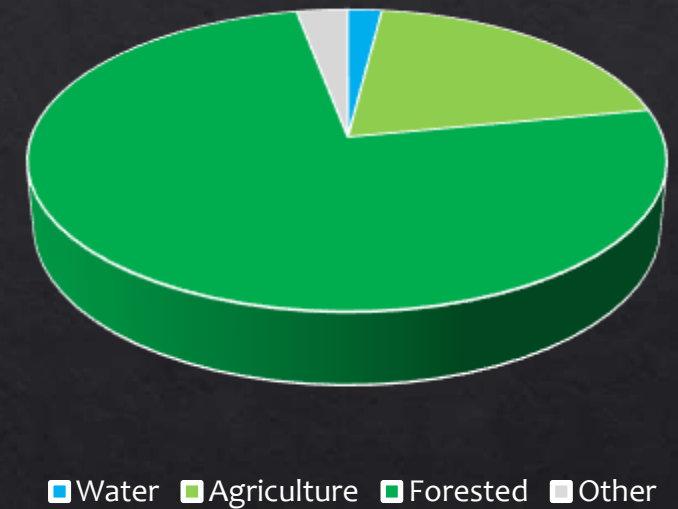
Langlade County, Wisconsin



RESOURCES

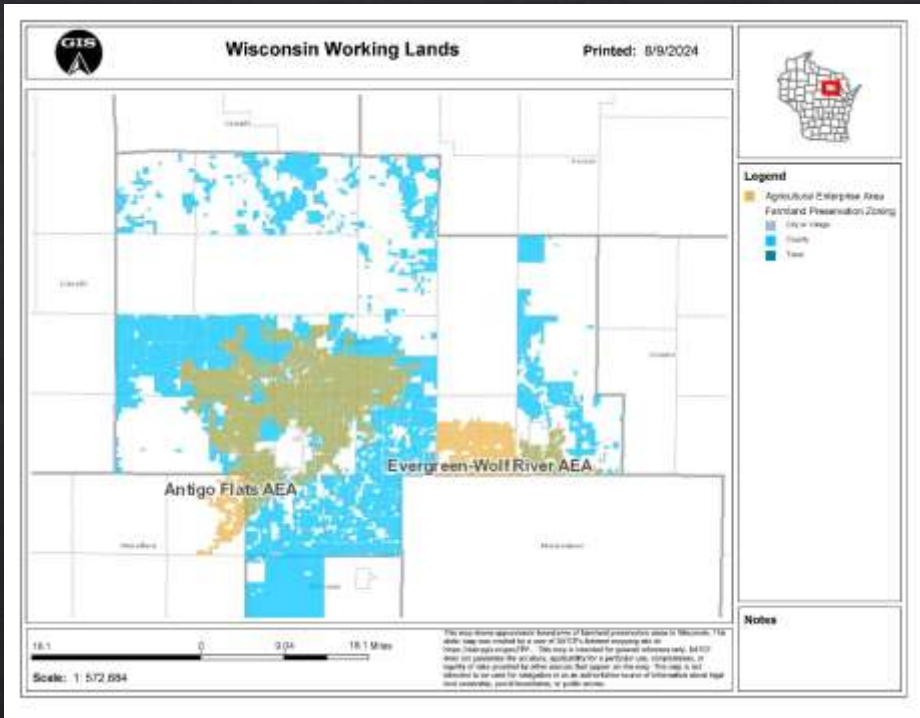
- ◇ WATERS (2%)
 - ◇ LAKES (207/843 are SPRING PONDS)
 - ◇ TROUT STREAMS (391 Miles)
 - ◇ WETLANDS (108,000 Acres)
 - ◇ GROUNDWATER (GENERALLY GOOD)
 - ◇ WATERSHEDS (14/16 HUC 12's TOP 30% WIDNR Top Protection Priority)
- ◇ AGRICULTURE (20%)
 - ◇ LIVESTOCK & CROPS
 - ◇ DAIRY STABLE, BUT CONCENTRATING
 - ◇ CROPS: SEED POTATOES TO SUPPLY THE CENTRAL SANDS & OTHER STATES
- ◇ FORESTS (75%)
 - ◇ 420,000 Acres (57% PUBLIC & 43% PRIVATE)

Land Cover

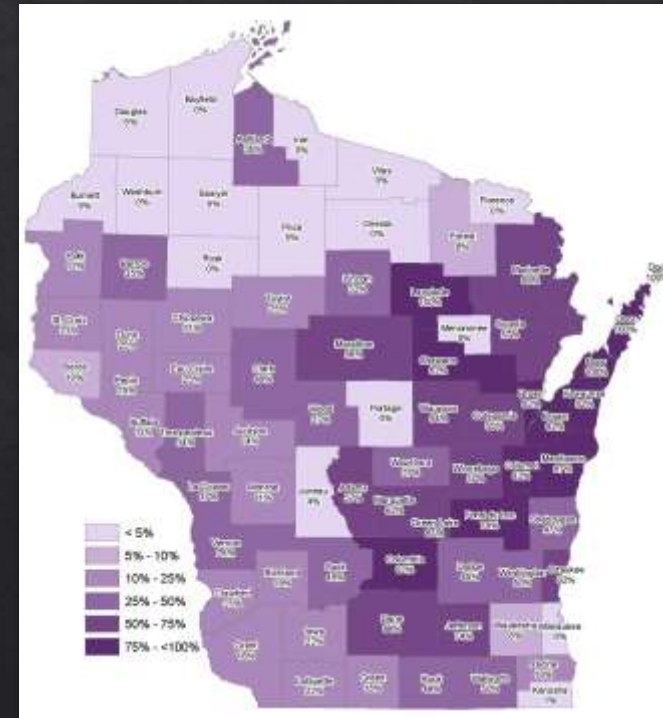


KEY PROGRAMS

Farmland Preservation



Nutrient Management Planning



APPROACH

WE HAVE NATURAL RESOURCES WORTHY OF OUR STEWARDSHIP

◇ 5 Prioritized Strategies:

1. EDUCATION & OUTREACH
2. MONITORING & EVALUATION
3. COORDINATION
4. IMPLEMENTATION
5. ENFORCEMENT

CHALLENGES

1. Nutrient Management Planning
 - ◇ Maintain coverage, Improve quality.
2. Farmland Preservation
 - ◇ Expanding involvement; Balancing workloads.
3. Water Quality
 - ◇ Developing strategies to maintain.
4. Education & Outreach
 - ◇ Re-starting involvement, connections, and coordination.
5. Implementation of Landowner Projects

Contact Information



LANGLADE COUNTY LAND CONSERVATION DEPARTMENT

837 CLERMONT STREET

ANTIGO, WI 54409

715-627-6292

Department Staff:

Chris Arrowood, Asst. Department Head, Land Records carrowood@co.langlade.wi.us

Katie Bahr-Bender, Conservationist kbahr-bender@co.langlade.wi.us

Amber Ryan, Technician Aryan@co.langlade.wi.us