

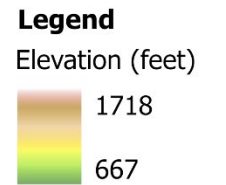
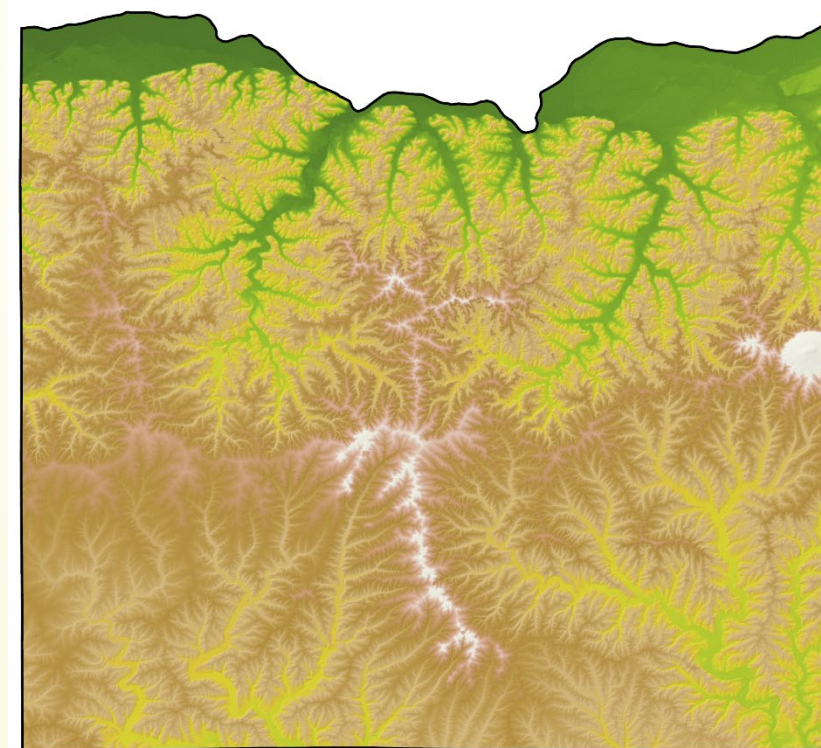
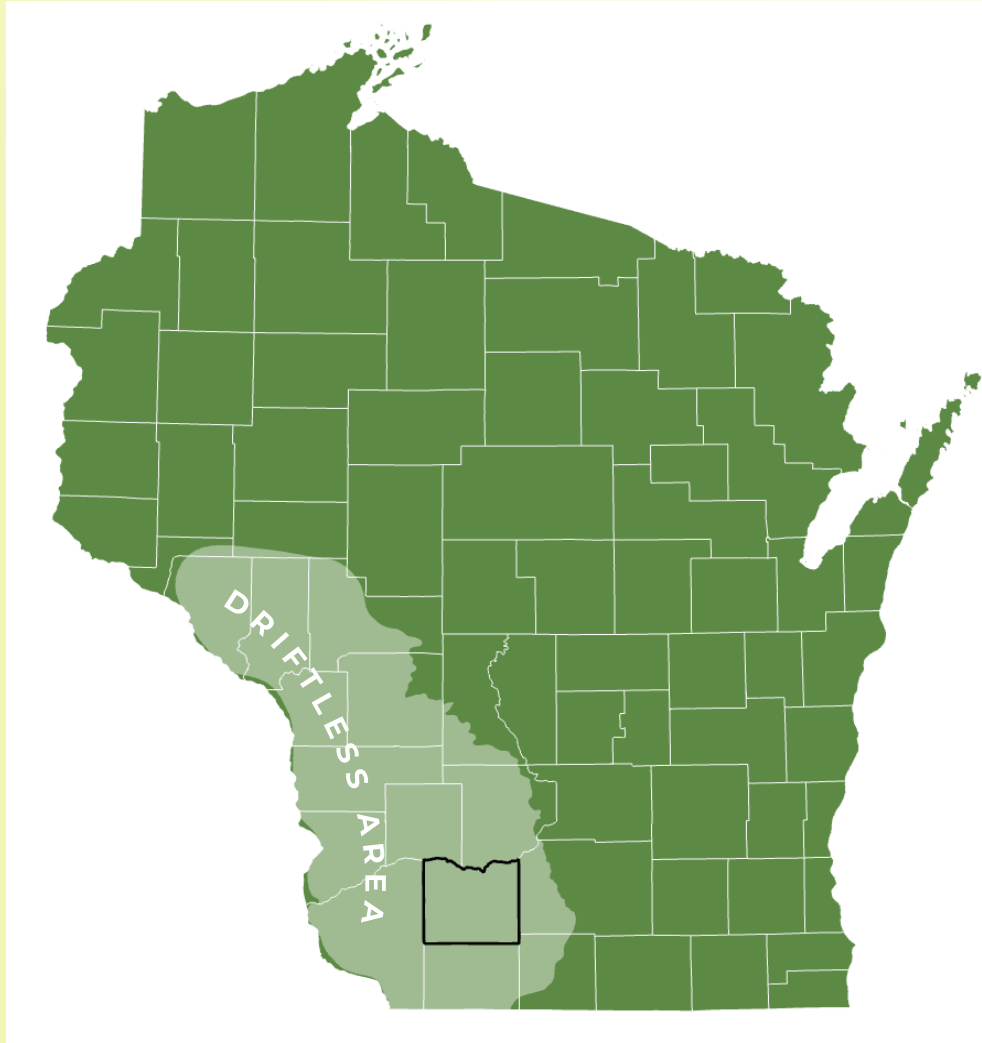


# Land and Water Resource Management Plan 2026-2035

Katie Abbott, County Conservationist

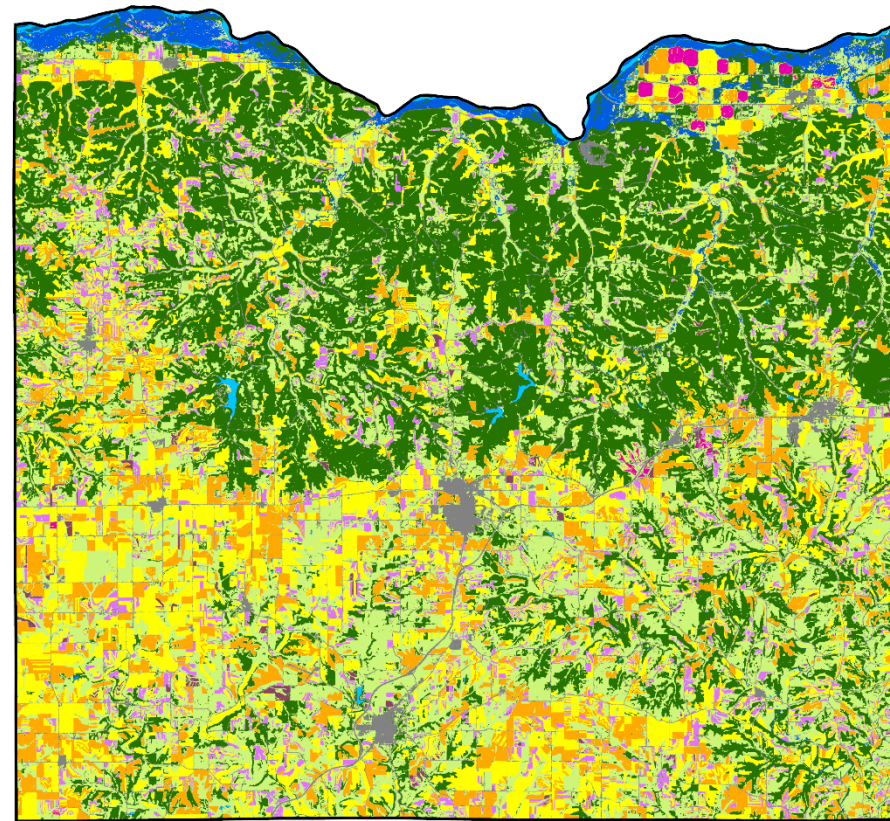
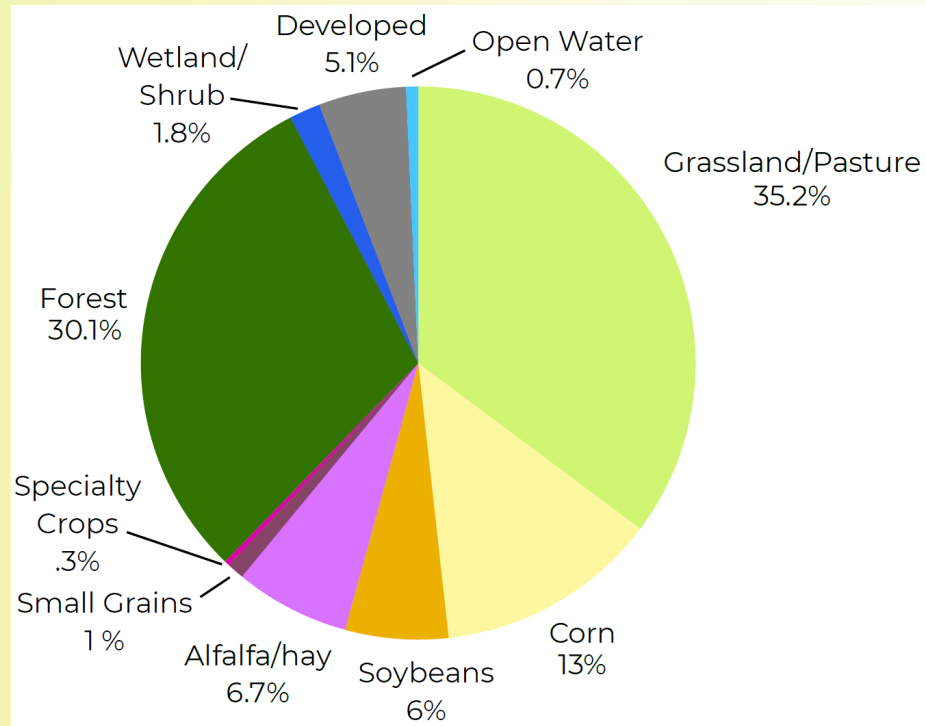
December 2, 2025

# Location and elevation





# Land Use



## Legend

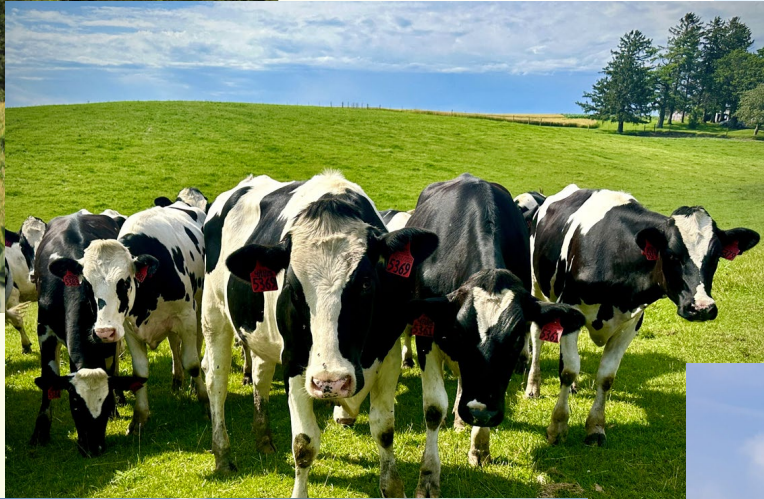
- Corn
- Developed
- Forage (alfalfa/hay)
- Forest
- Grassland/Pasture/Idle
- Open water
- Other fruit, vegetables, & specialty crops
- Small grains
- Soybeans
- Wetland and shrubland

0 2 4 8 Miles

Date: 9-12-2025  
Source: USDA

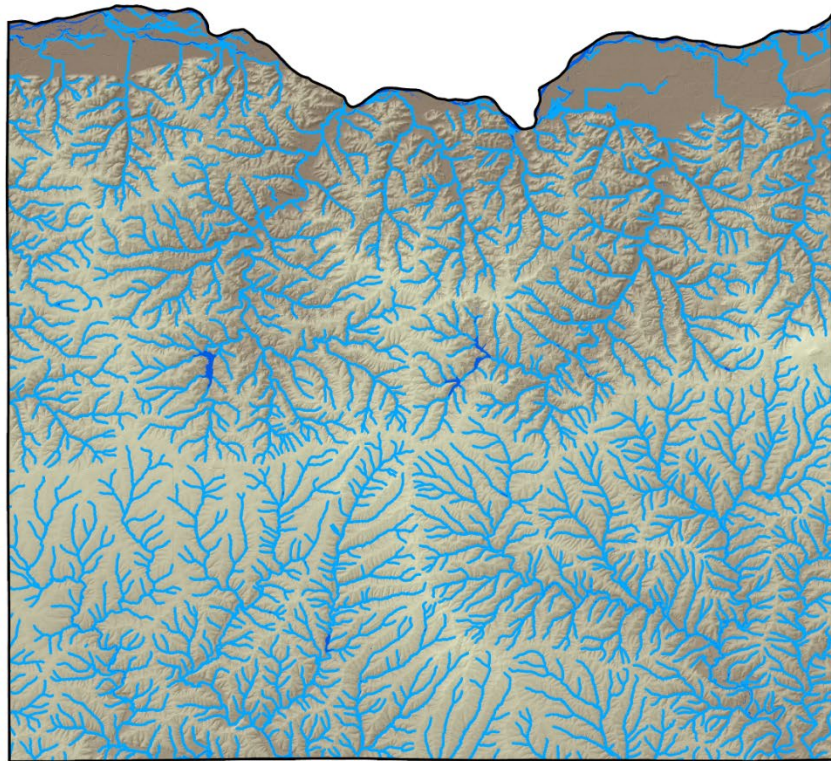








# Surface Water

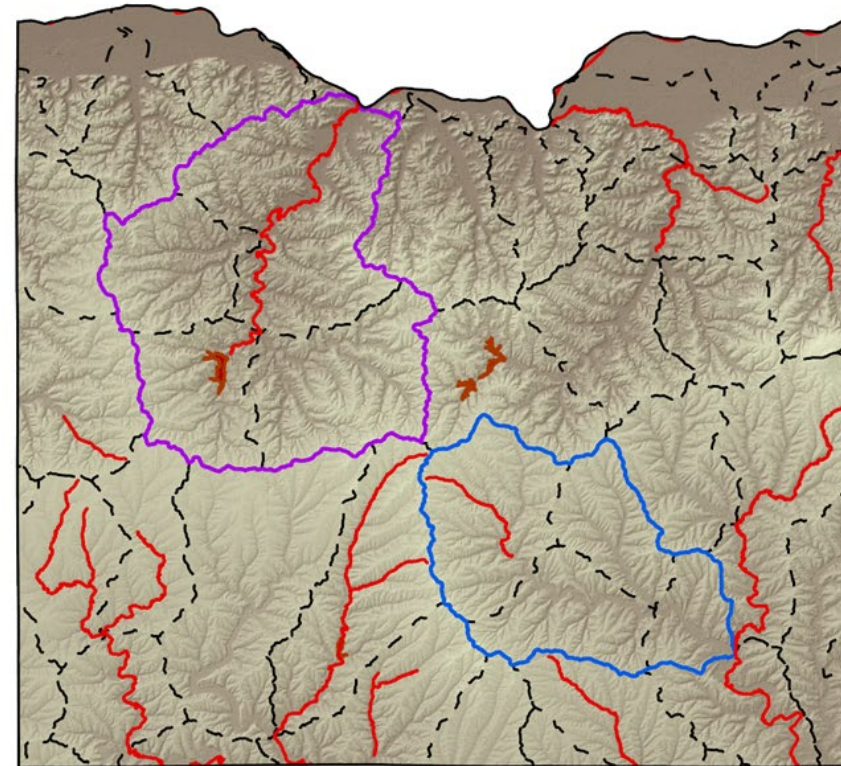


**Legend**

- Streams
- Waterbodies (Open Water)

0 2 4 8 Miles

Date: 9-12-2025  
Source: DNR



**Legend**

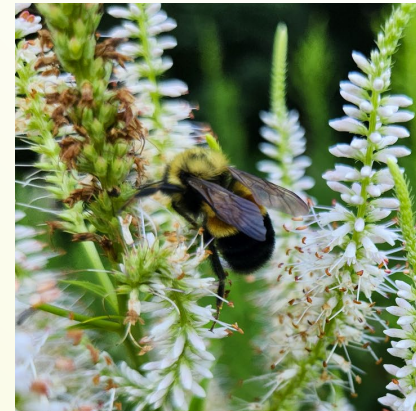
- 303(d) Impaired streams
- 303(d) Impaired lakes
- TMDL watersheds
  - Dodge Branch
  - Otter Creek
- HUC12 (Subwatersheds)

0 2 4 8 Miles

Date: 9-22-2025  
Source: DNR

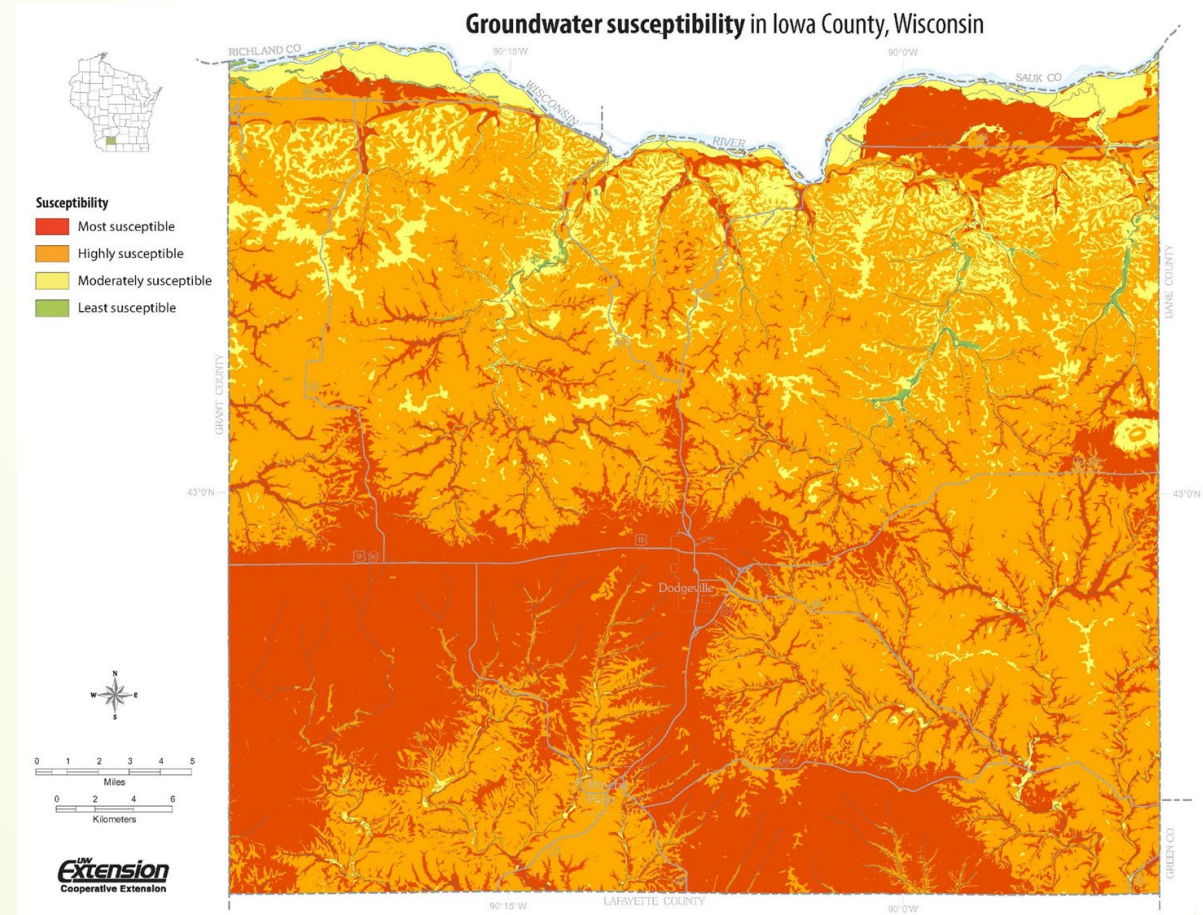


# Resource Concerns





# Groundwater





# Our Team



Conservation Technician



Conservation Specialist



County Conservationist



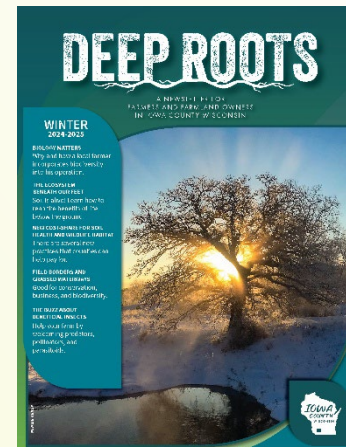
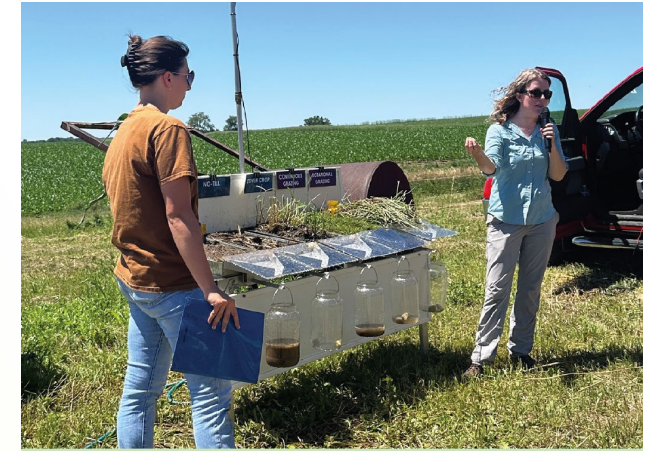
Department Assistant



Conservation Intern



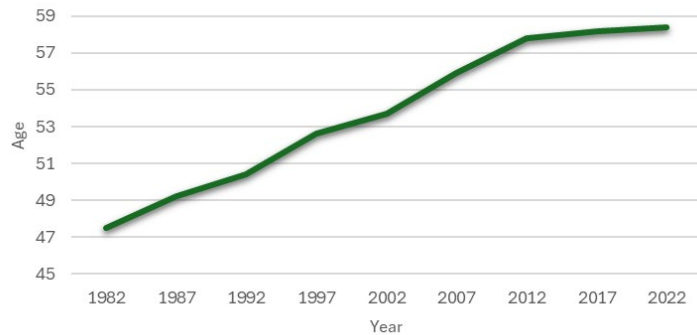
# Successes



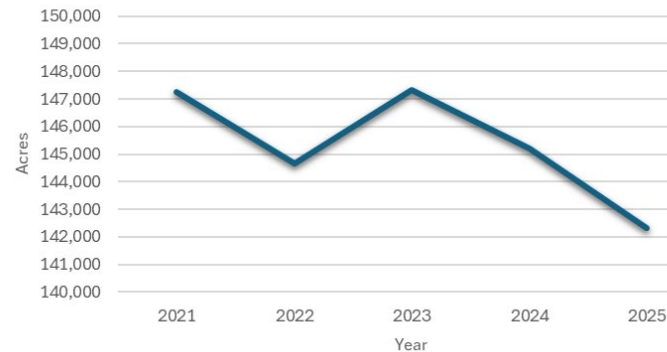


# Challenges

Iowa County Producers Average Age



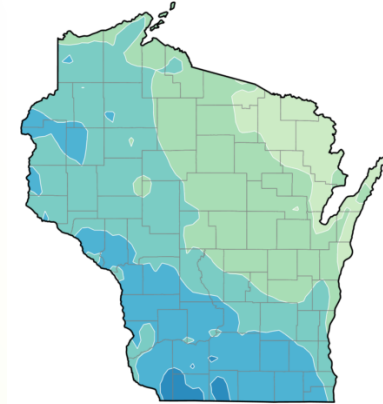
Acres with issued FPP certificates



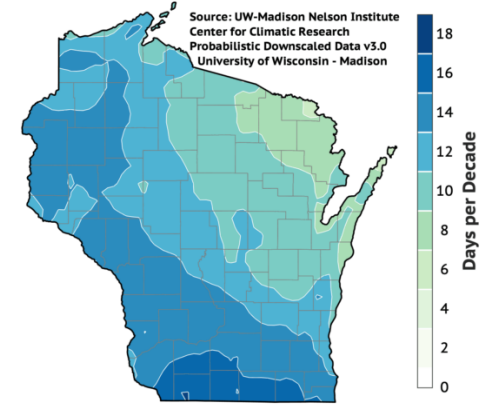
Land use changes 2002-2022

Acres	Corn grain	38.6%
	Corn silage	-14.5%
	Soybeans	77.1%
	Pasture	9.2%
	Forage	-15.8%
	CRP	-54.3%
Number of farms	Total farms	-9%
	Beef	26.7%
	Dairy	-65.2%

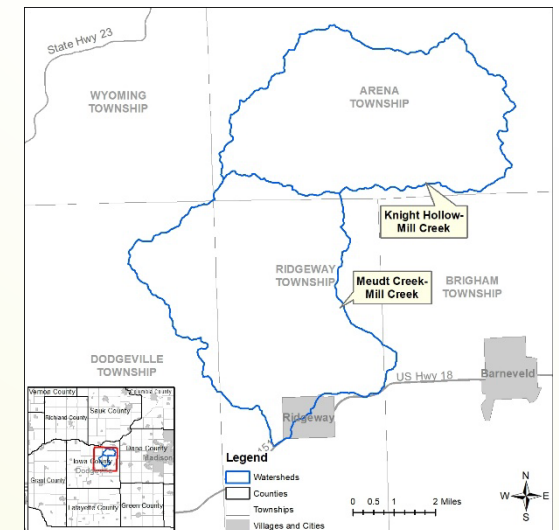
Days per Decade with PRCP > 2in  
1981-2010 Conditions (HISTORICAL)



Days per Decade with PRCP > 2in  
2041-2060 Conditions (SSP245)



Source: UW-Madison Nelson Institute  
Center for Climatic Research  
Probabilistic Downscaled Data v3.0  
University of Wisconsin - Madison





# Future Goals

Acres with issued FPP certificates

