



Producer-Led Watershed Protection Grant Program 2025 Conservation Progress Report

PARTICIPATION CONTINUES TO GROW IN NEW GROUPS, ACRES, AND DOLLARS INVESTED BY FARMERS

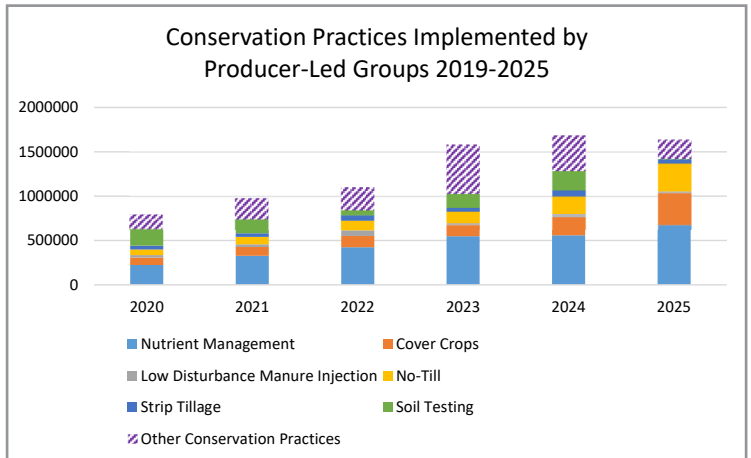
In 2025, there were **49 producer-led groups** funded by the program encompassing **2,310 members** and **972,693 acres of managed farmland**, compared to 47 groups with 2,411 members and 969,149 acres in 2024.



The members utilized **\$650,107.88 grant dollars** to implement conservation practices, and farmers invested an additional **\$3,892,289.51** in conservation practices.

CONSERVATION PRACTICES DECREASED BY 3% FROM 2024

In 2025, conservation practices implemented by producer-led groups **declined to 1.64 million acres**. Refer to the New Data Gathered in 2025 section below for further explanation.



NEW DATA GATHERED IN 2025

The changes in total acres of conservation practices, acres of cover crops, acres of no-till, and the resulting environmental impact depicted in this report are due to changes in data that was gathered in 2025. Producer-led groups were asked to report the number of acres of conservation practices their members implemented beyond their respective incentive programs. Increases in cover crops and no-till acreage, and related environmental impacts, show the positive changes in conservation in farming systems as a long-term consequence of this program. Incentive programs assist farmers in applying these practices and, once implemented, they often become a continued part of their operation.

In 2025, producer-led groups used their incentive programs to help producers implement **192,193 new acres of cover crops** and **171,650 new acres of no-till and planting green**. Groups also reported an additional **164,350 acres of cover crops** and **231,731 acres of no-till and planting green** that are a part of farmers' ongoing systems but were not part of the incentive program. The total acreage influenced by the program are **356,543 acres of cover crops** and **403,381 acres of no-till and planting green**.



Producer-Led Watershed Protection Grant Program 2025 Conservation Progress Report

KEEPING SOIL AND NUTRIENTS IN PLACE

51% increase in no-till practices



Minimizing disturbance to the soil to help prevent erosion from wind and water.

18% increase in nutrient management



Applying nutrients at the right rate, time, and place so they don't run off into waterways.

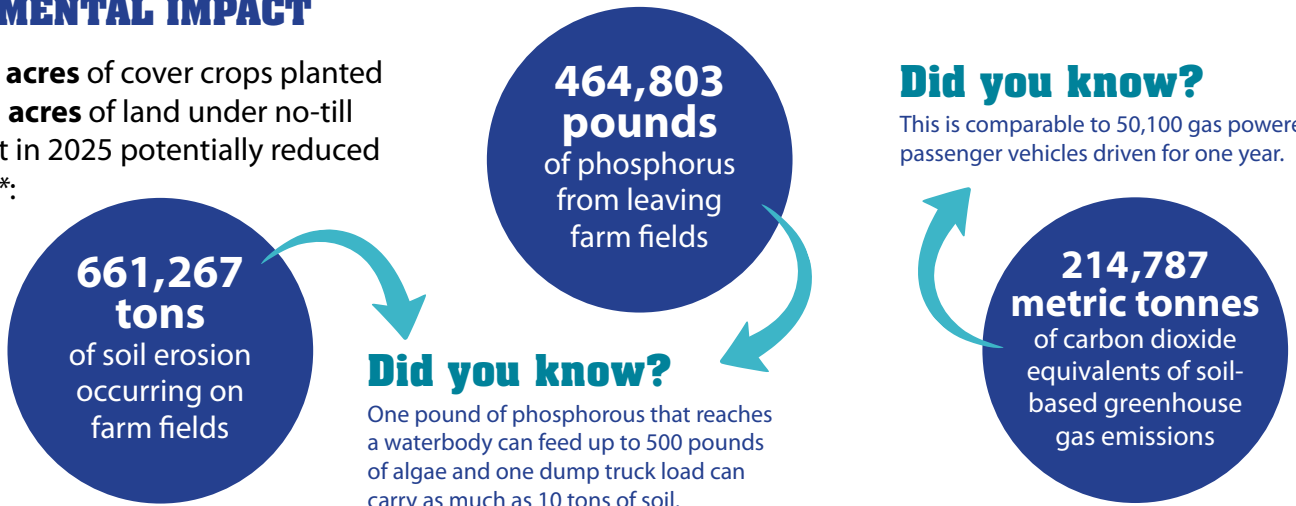
42% increase in cover crops



Keeping the ground covered to hold soil in place and feed soil microbes.

ENVIRONMENTAL IMPACT

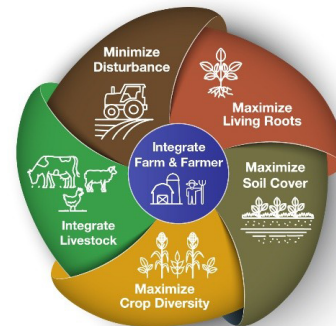
The **356,543 acres** of cover crops planted and **403,381 acres** of land under no-till management in 2025 potentially reduced an *estimated**:



** All estimates are provided from models. Actual reductions in pollutants may be higher or lower.*

SOIL HEALTH SYSTEMS

Farmers in producer-led groups are integrating multiple practices onto their farms as part of a larger soil health system, including **innovative or non-traditional soil health practices**. In 2025, producer-led groups implemented nearly **134,757 acres** of these "other soil health practices," which include **targeted nitrogen management, managed grazing, and other perennial vegetation practices**.



The Principles of Soil Health **Page 2**