

# 2024

## Nutrient Management Program Annual Report



# 2024 Nutrient Management Program Annual Report

Prepared by the Wisconsin Department of Agriculture, Trade and Consumer Protection (DATCP)

In 2024, the DATCP Nutrient Management Program and county land conservation departments continued working with farmers, agronomists, and conservation partners to advance nutrient management planning across Wisconsin. These plans guide the use of manure and fertilizer to meet crop nutrient needs while protecting water quality by minimizing runoff to surface and groundwater resources. Planning is based on soil and manure testing, and must follow the NRCS 590 Nutrient Management Standard.

Statewide support for nutrient management continues to grow through programs like Nutrient Management Farmer Education program, the Farmland Preservation Program, and the development of a new conservation agronomy curriculum to help prepare more people to support nutrient management planning at the local level.

Counties play a central role in reviewing plans and reporting annual progress to DATCP. In 2024, they reported 3.82 million acres of cropland covered by nutrient management plans, representing approximately 44% of Wisconsin’s harvestable cropland. This growth reflects a strong, ongoing commitment by farmers, planners, and conservation staff to support nutrient management and protect Wisconsin’s natural resources.

NMP Numbers	2023	2024
NM Plans Reported by WI Counties	7,562	7,917
Statewide Acres	3.66 mil	3.82 mil
Percent of WI cropland covered by a plan	41.8%	44%
Farmer written Plans	1,711	1,539

Figure 1: Summary of nutrient management plan metrics reported by counties to DATCP for 2023 and 2024.

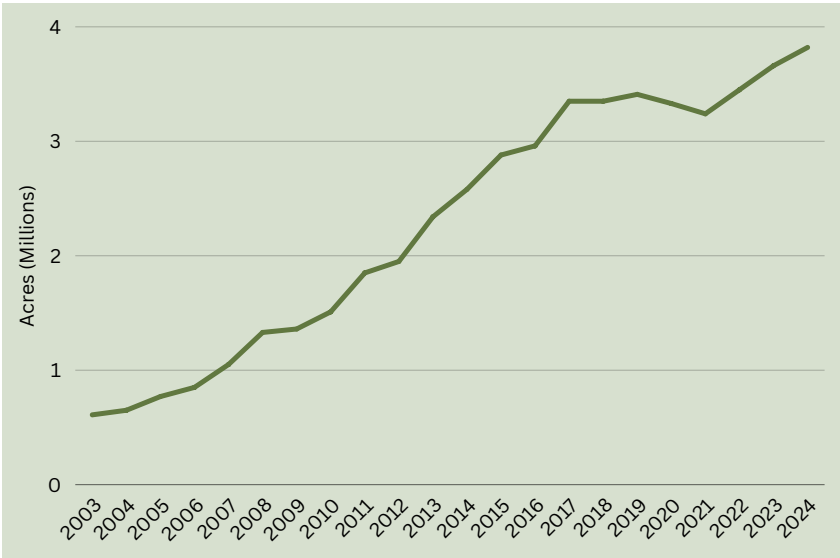


Figure 2: Trends in NM plans acres from 2003-2024

Farmer-written nutrient management plans remain an important part of Wisconsin’s broader conservation strategy, combining local knowledge with practical application. The Nutrient Management Farmer Education (NMFE) program provides funding to county land conservation departments, technical colleges, and non-profits. From 2021 to 2024, NMFE has awarded \$1,011,583 to 69 applicants, reaching 1,092 producers. 403 of those producers attended classes in 2024 alone.

To learn more, please visit the NMFE webpage:  
[https://datcp.wi.gov/Pages/Programs\\_Services/NMFEGrants.aspx](https://datcp.wi.gov/Pages/Programs_Services/NMFEGrants.aspx).

# 2024 Nutrient Management Program Annual Report

Prepared by the Wisconsin Department of Agriculture, Trade and Consumer Protection (DATCP)

## Upcoming Nutrient Management Changes

## 590 Nutrient Management Revision

If you would like to learn more or get involved in the revision process for the Nutrient Management Standard, please visit the Standard Oversight Council webpage:

<https://socwisconsin.org/projects/nrcs-590-nutrient-management>

## A2809 Updates

The Wisconsin Nutrient Application Guidelines for field, vegetable, and fruit crops (A2809) are currently undergoing updates. This resource will soon be available on a web-based platform. You can check out the website and provide feedback here:

## Wisconsin Nutrient Application Guidelines

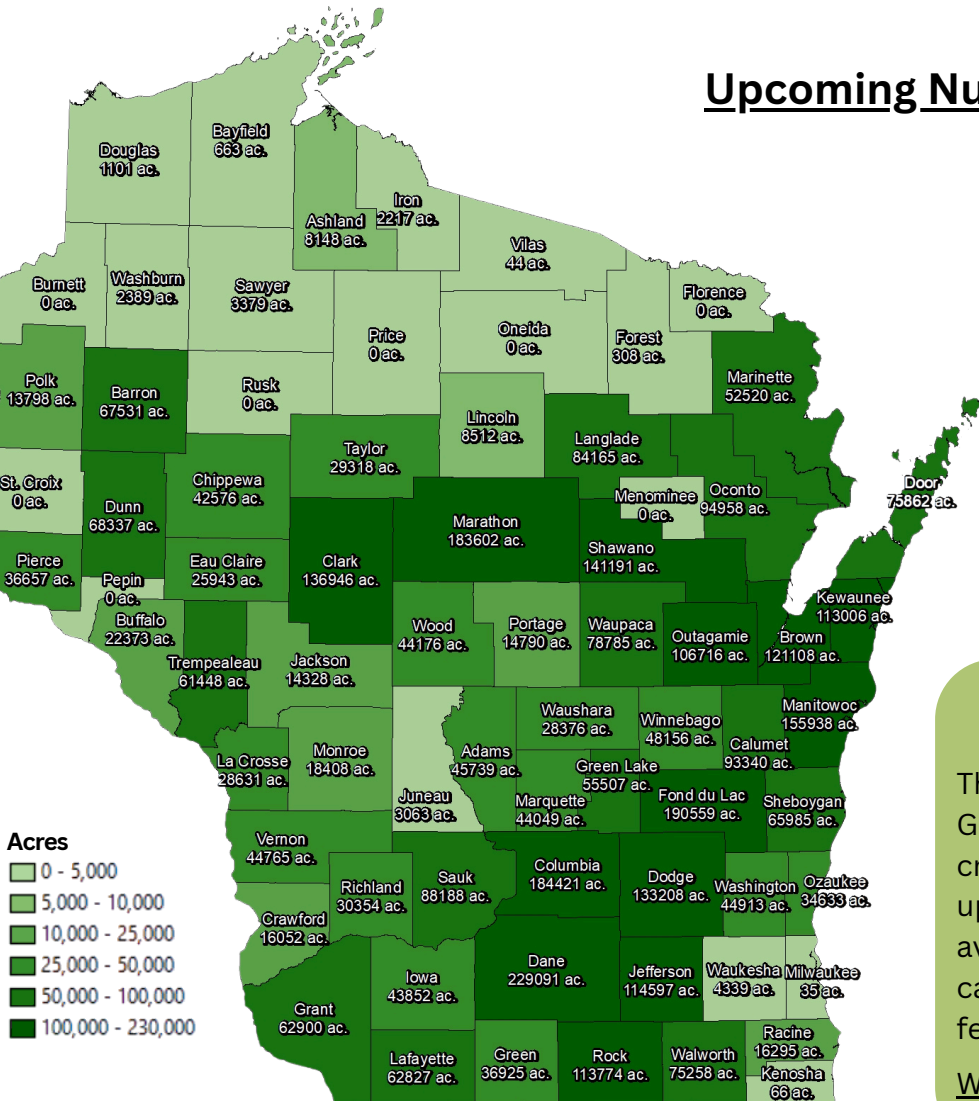


Figure 3: Nutrient management plan acres per county for 2024.

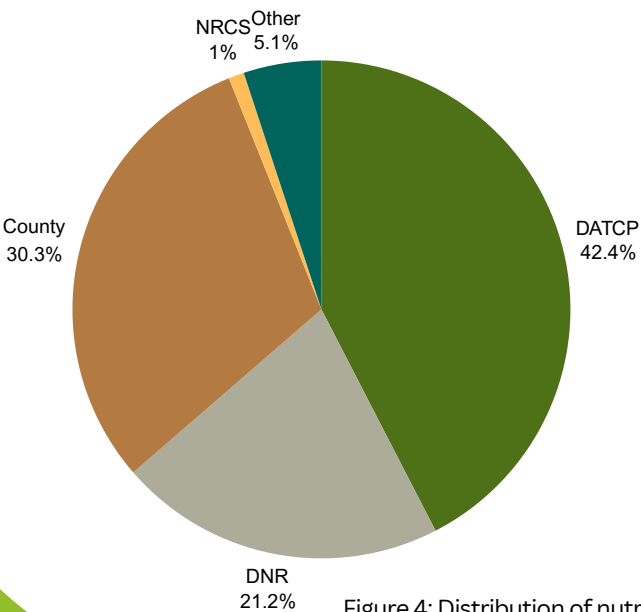


Figure 4: Distribution of nutrient management plans by agency or program recorded by county land conservation departments in 2024

## SNAP+ V3 Data Layers

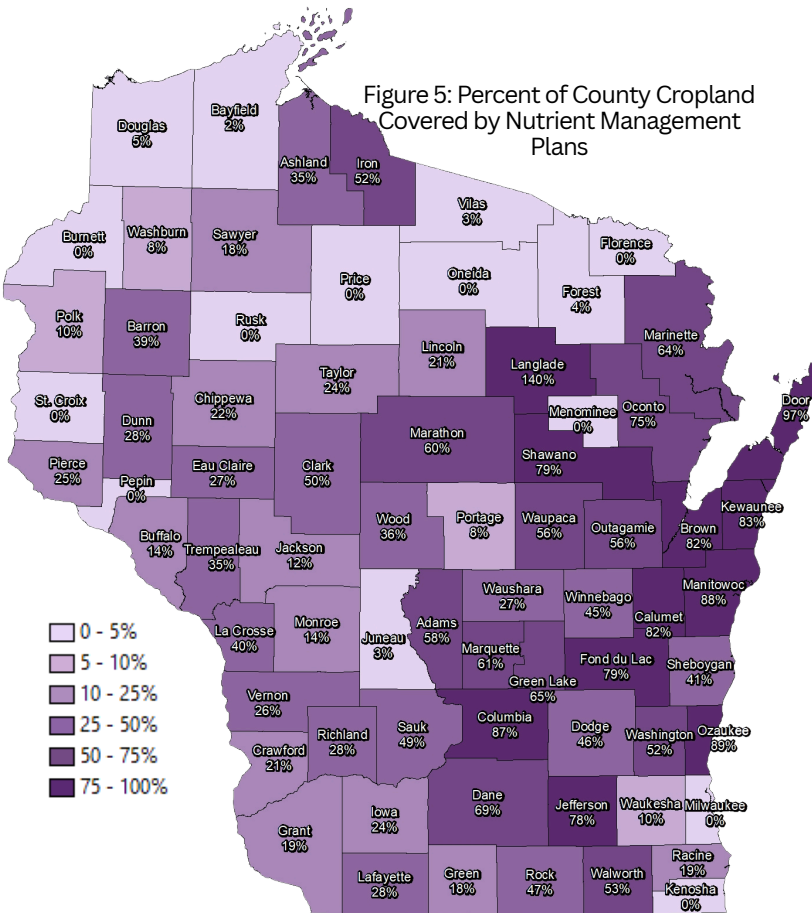
Many of the data layers in Snap Maps - including bedrock depth, water table, surface water features, buffers, slopes, soils, etc. - will be updated prior to August 1 to align with the launch of SnapPlus V3.

Going forward, August 1 will serve as the annual update date for data layers. This means conservation staff and planners should keep that date in mind to ensure they are using the most current data in their nutrient management plans.



# 2024 Nutrient Management Program Annual Report

Prepared by the Wisconsin Department of Agriculture, Trade and Consumer Protection (DATCP)



## Introducing Wrangler Jones: Conservation Agronomist

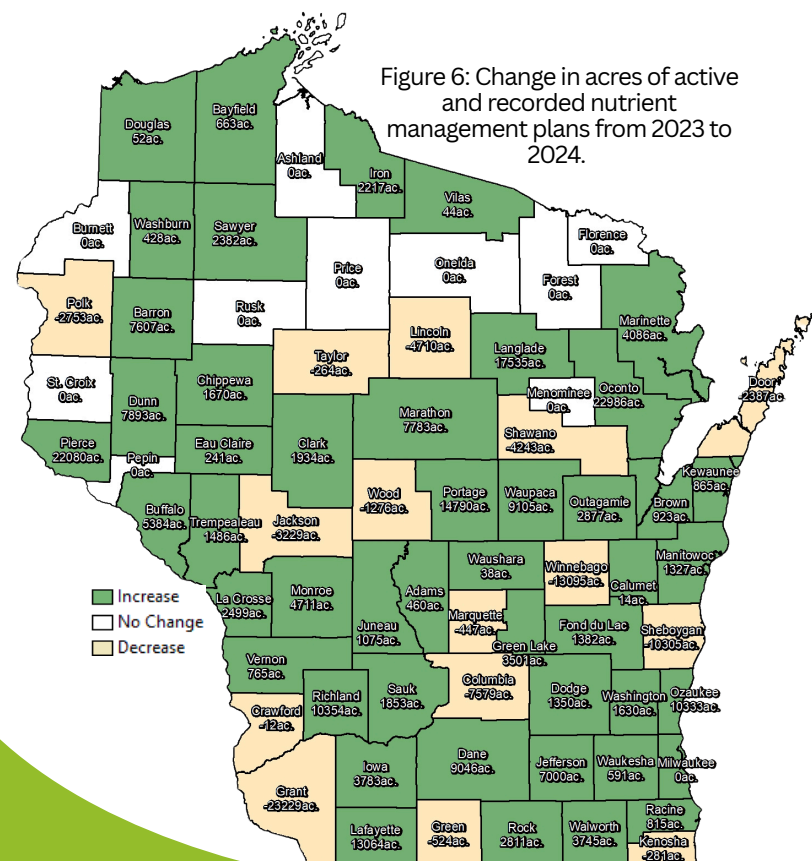
Over the past year, I had the chance to work with Andrea Topper on building out a Conservation Agronomy curriculum. With my background as a farmer, retail crop consultant, and custom applicator, I was able to bring real-world experience to the table. I know how important it is to have conservation conversations in a way that connects with farmers—using language they understand and tools they're already familiar with. Building relationships and earning a farmer's trust doesn't happen overnight—it takes time, consistency, and follow-through. This program is designed to give conservation staff the practical tools and knowledge they need to support that process and have meaningful, productive conversations in the field.

I also spent time traveling around the state attending producer-led group events and learning from each one. We're currently developing a program within these groups to gather more consistent data across the state on various conservation practices. The idea is to reduce risk for farmers who want to try new practices by showing local, farmer-driven results. These demo plots are being used to measure things like nutrient management, weed suppression, added income opportunities, and improvements to soil health—so that we can fine-tune recommendations based on what matters most to each farm.

## Funding Resources Available

[Click here](#) to find out more about Nutrient Management-related financial assistance opportunities, and programs below for other related resources:

- [SWRM Cost-Share Grants](#)
- [NMFE Grants](#)
- [Farmland Preservation](#)
- [Nitrogen Optimization Pilot Program](#)





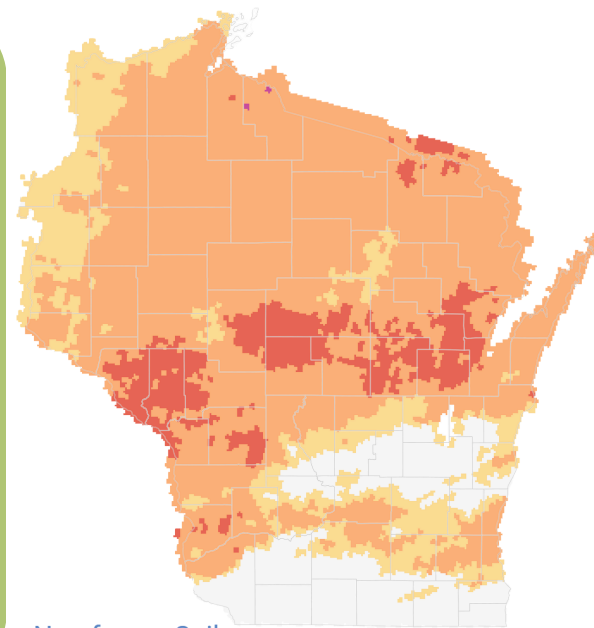
# 2024 Nutrient Management Program Annual Report

Prepared by the Wisconsin Department of Agriculture, Trade and Consumer Protection (DATCP)

## Updates to the Runoff Risk Advisory Forecast

The Runoff Risk Advisory Forecast (RRAF) website and software infrastructure got an update this year! These changes make the site easier to use, maintain, and update. Changes include:

- New website format
- Mobile friendly design
- Improved, colorblind-friendly, map layer color scheme
- Ability to search for forecast details by address
- Forecast charts now include soil temperature and soil saturation
- Updates to snapshot feature, allowing users to view all four RRAF forecasts for the selected day and location
- Improvements to the back-end infrastructure, including the dynamic web-application framework, maps engine, and server components



Non-frozen Soil



## Conservation Agronomy Training - Coming 2026

This training program was developed in response to needs identified by a multi-agency collaborative, particularly the need to train conservation staff in basic agronomic practices. The goal is to better equip staff to work with farmers and effectively deliver conservation programs. Funding from the Gulf Hypoxia Steering Committee was awarded to DATCP to contract with Fox Valley Technical College to develop a series of online training modules.

These modules will cover foundational agronomic topics, including differences between dairy, beef, and cash crop operations; common crops and their needs; and more. They will also incorporate NRCS conservation practice standards.

The modules are intended to be self-paced and accessible to all, serving to prepare staff in advance of a three-day in-person training. The in-person training will provide hands-on, real-world experience, helping participants integrate agricultural and conservation practices and will include training on understanding producer motivations and personality types. Participants will also learn to use a conservation planning process to identify resource concerns, collect information, and evaluate both primary and alternative solutions.

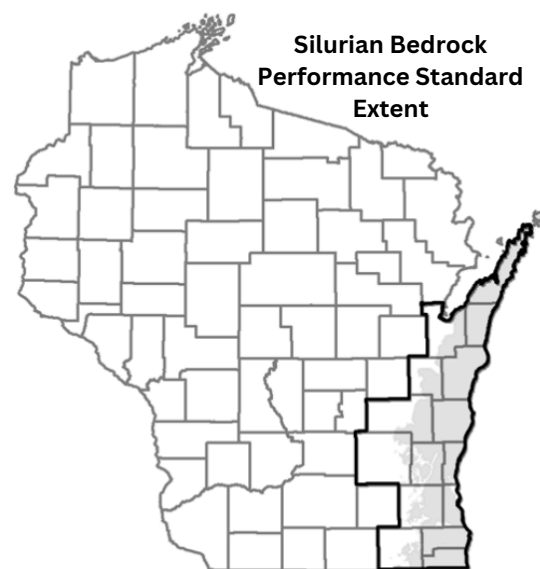
# 2024 Nutrient Management Program Annual Report

Prepared by the Wisconsin Department of Agriculture, Trade and Consumer Protection (DATCP)

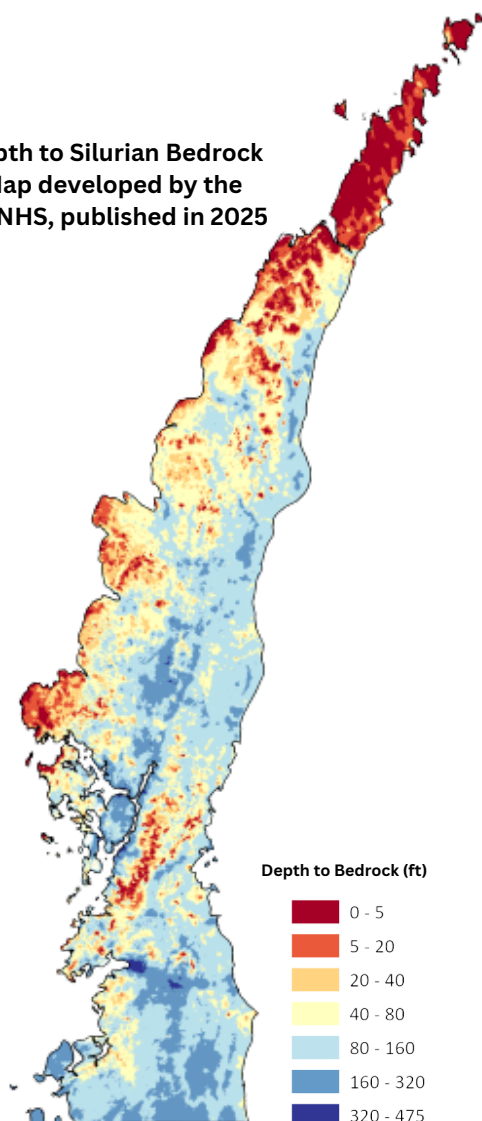
## Silurian Bedrock Performance Standard

In 2018, the Wisconsin Department of Natural Resources (DNR) established NR 151.075 - the Silurian Bedrock Performance Standard. In addition to existing nutrient management requirements, this rule places further restrictions and prohibitions of manure applications on land where Silurian bedrock is covered by 20 feet of soil or less.

In 2024, DATCP incorporated this rule into ATCP 50 to provide the technical and financial resources needed for implementation via nutrient management. This included the release of DATCP's first technical standard: DATCP 01 - Verification of Depth to Bedrock.



Depth to Silurian Bedrock  
Map developed by the  
WGNHS, published in 2025



DATCP is in the process of developing additional guidelines for county land conservation departments intending to utilize SWRM funding to update nutrient management plans in alignment with this performance standard. This guidance will cover funding eligibility and introduce updated documentation, such as the 590 Nutrient Management Checklist and forms related to the Farmland Preservation Program (FP). If you are involved in FP through zoning or are entering into new FP agreements after July 1, 2024, you must comply with the performance standard by April 1, 2027.

## Map of Depth to Silurian Bedrock

In 2025, the Wisconsin Geologic and Natural History Survey (WGNHS), with funding from DATCP, finalized an updated map of the Depth to Silurian Bedrock. This map is currently accessible for planning purposes. Efforts are underway to integrate the map into SnapPlus V3, ensuring that compliance with the performance standard can be documented.

This updated map provides higher resolution and accuracy than previously published maps and is readily modifiable as new data becomes available via map disputes and verification of depth to bedrock work.

In addition, WGNHS published a report that describes the data sets utilized to create and update the map. You can read more here: <https://wgnhs.wisc.edu/pubshare/DS004-suppl.pdf>.

# 2024 Nutrient Management Program Annual Report

Prepared by the Wisconsin Department of Agriculture, Trade and Consumer Protection (DATCP)



## Upcoming Nutrient Management Related Trainings

### 2025 Nutrient Management Regional Meetings

We are excited to be hosting our annual nutrient management regional meetings again this year! Registration is free, light lunch included, and CCA CEUs will be offered.

Click [here](#) to register or [here](#) to learn more!

- August 20 - Jefferson
  - Jefferson County Extension Building (Rooms 8 and 9, lower level)
  - 864 Collins Road, Jefferson, WI 53549
- September 2 - Dodgeville
  - Iowa County Health and Human Services Building (HHS Community Room)
  - 303 W. Chapel St., Dodgeville, WI 53533
- September 3 - Stevens Point
  - Portage County Annex Building (Rooms 1 and 2, first floor)
  - 1462 Strongs Ave., Stevens Point, WI 54481
- September 9 - Eau Claire
  - Town of Washington Building (Community Room)
  - 5750 Old Town Hall Road, Eau Claire, WI 54701
- September 10 - Appleton
  - Fox Valley Technical College (Room A170A - park in North Parking lot and enter through door 16)
  - 1825 N. Bluemound Drive, Appleton, WI 54914



# SnapPlus

Wisconsin's Nutrient Management Software

[snapplus.wisc.edu](http://snapplus.wisc.edu)

### SnapPlus V3 Summer Trainings

With the upcoming launch of SnapPlus V3, DATCP and the SnapPlus developers are hosting a series of SnapPlus trainings. Registration is free and CEUs will be available.

In-person trainings will be held from 10 a.m. - 3 p.m. Online webinars will be held from 10 a.m. - 1 p.m.

Click [Here](#) to register and [Here](#) to learn more!

- June 17 - Appleton
  - Fox Valley Technical College, HSTC Building (Health Simulation & Energy Center - Room HS210)
  - 1825 N. Bluemound Drive, Appleton, WI 54914
- June 19 - Southwest Wisconsin Technical College, Fennimore Campus (Building 100 - Room 124)
  - 1800 Bronson Blvd., Fennimore, WI 53809
- July 1 - Blackhawk Technical College, Janesville Campus (Blackhawk Room - Room 1315)
  - 6004 S. County Road G, Janesville, WI 53546
- July 15 - Chippewa Valley Technical College (Energy Education Center - Room 132)
  - 4000 Campus Road, Eau Claire, WI 54703
- July 17 - LCD Webinar
- July 22 - Agronomist Webinar



# 2024 Nutrient Management Program Annual Report

Prepared by the Wisconsin Department of Agriculture, Trade and Consumer Protection (DATCP)

## Contact Information

### Specialists

Andrea Topper -  
Training & Outreach

### Phone

(608) 405-0235

### Email

andrea.topper@wisconsin.gov

Cody Calkins -  
Policies & Standards

(608) 224-4604

cody.calkins@wisconsin.gov

Wrangler Jones -  
Conservation Agronomy

(608) 896-3912

wrangler.jones@wisconsin.gov

### Website

[https://datcp.wi.gov/Pages/Programs\\_Services/NutrientManagement.aspx](https://datcp.wi.gov/Pages/Programs_Services/NutrientManagement.aspx)

### Office

2811 Agriculture Drive, PO Box 8911  
Madison, Wisconsin 53708-8911

