

# 2024 Conservation Progress Report



## Producer-Led Watershed Protection Grant Program

### PARTICIPATION CONTINUES TO GROW

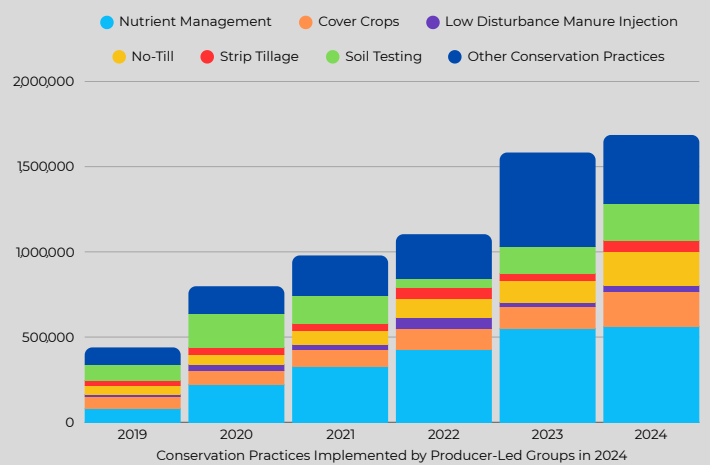
In 2024, there were **47 producer-led groups** funded by the program, comprised of **2,411 members** and **969,149 acres of managed farmland**, compared to 2,016 members and 782,674 acres in 2023.



The members utilized **\$667,526** in DATCP funds to implement conservation practices, and farmers invested an additional **\$2,706,197.40** in conservation practices as match.

### CONSERVATION PRACTICES INCREASED BY 6% FROM 2023

In 2024, conservation practices implemented by producer-led groups **grew to over 1.69 million acres**.



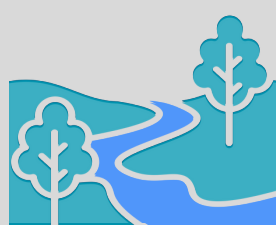
## KEEPING SOIL AND NUTRIENTS IN PLACE

**34% increase in no-till practices**



Minimizing disturbance to the soil to help prevent erosion from wind and water.

**2% increase in nutrient management**



Applying nutrients at the right rate, time, and place so they don't run off into waterways.

**37% increase in cover crops**



Keeping the ground covered to hold soil in place and feed soil microbes.

## ENVIRONMENTAL IMPACT

The 206,068 acres of cover crops planted and 196,196 acres of land under no-till management in 2023 potentially reduced an *estimated\** :

### Did you know?

This is comparable to 39,504 gas powered passenger vehicles driven for one year.

**169,361**

tons of carbon dioxide equivalents of soil-based greenhouse gas emissions

**331,157**

tons of soil erosion occurring on farm fields

**235,405**

pounds of phosphorus from leaving farm fields

### Did you know?

One pound of P that reaches a waterbody can feed up to 500 pounds of algae and one dump truck load can carry as much as 10 tons of soil.

## SOIL HEALTH SYSTEMS

Farmers in producer-led groups are integrating multiple practices onto their farms as part of a larger soil health system, including **innovative or non-traditional soil health practices**.



In 2024, producer-led groups implemented nearly **399,230 acres** of these "other soil health practices," which include **targeted nitrogen management, managed grazing, and other perennial vegetation practices**.

This report was developed by the Wisconsin Department of Agriculture, Trade and Consumer Protection.

\* All estimates are provided from models. Actual reductions in pollutants may be higher or lower.

Contact: [Randall.Zogbaum@wi.gov](mailto:Randall.Zogbaum@wi.gov)

April 2025