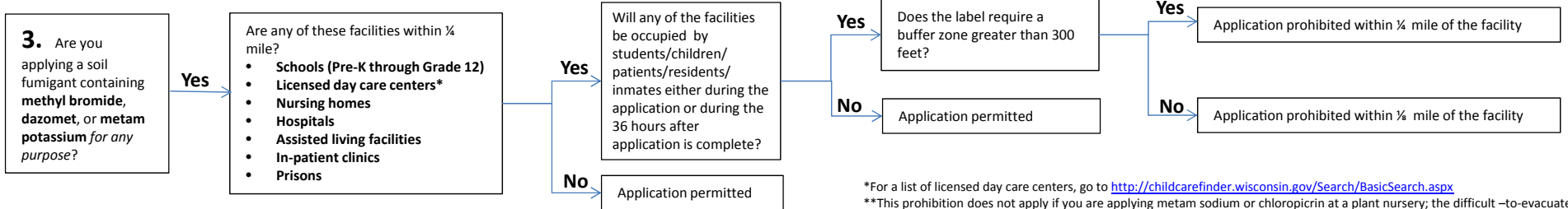
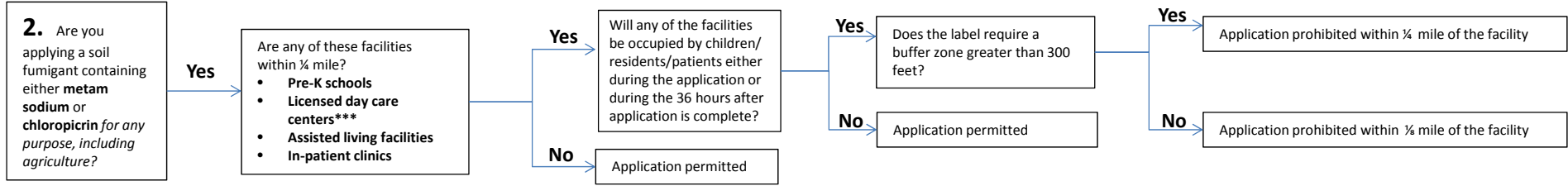
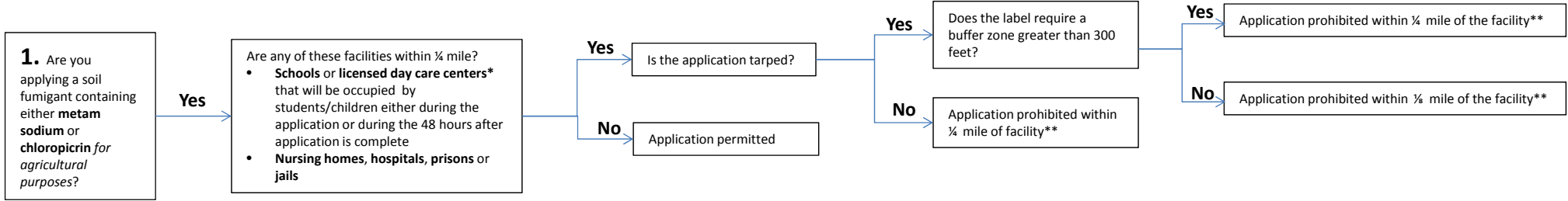


Soil Fumigant Application Requirements Near Difficult-to-Evacuate Sites

Note: If you are using metam sodium or chloropicrin for agriculture, check both Row 1 *and* Row 2 below. If you are using metam sodium or chloropicrin for non-agricultural purposes, check Row 2. If you are using other soil fumigants for any purpose, check Row 3.



*For a list of licensed day care centers, go to <http://childcarefinder.wisconsin.gov/Search/BasicSearch.aspx>
 **This prohibition does not apply if you are applying metam sodium or chloropicrin at a plant nursery; the difficult –to-evacuate site is a day care center that was licensed when the nursery was already in existence; and you notify the day care operator 24 hours in advance, when the center is in session.
 ***If you are applying metam sodium or chloropicrin at a plant nursery that came into existence when the day care was already there.