

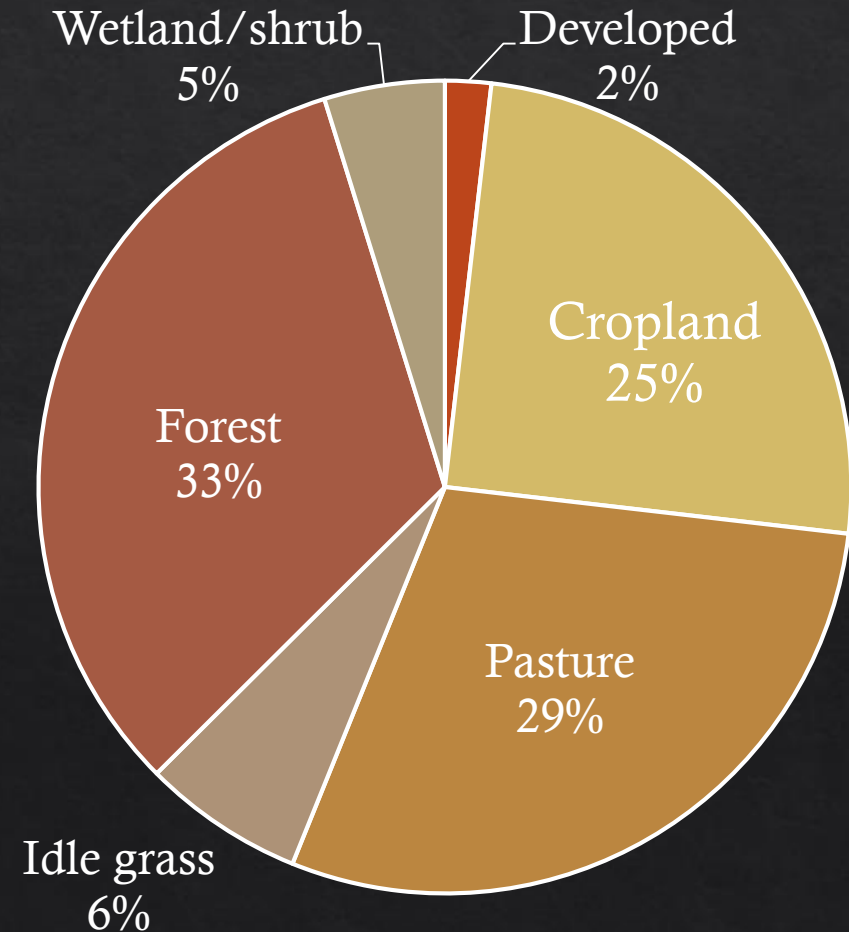
# Iowa County



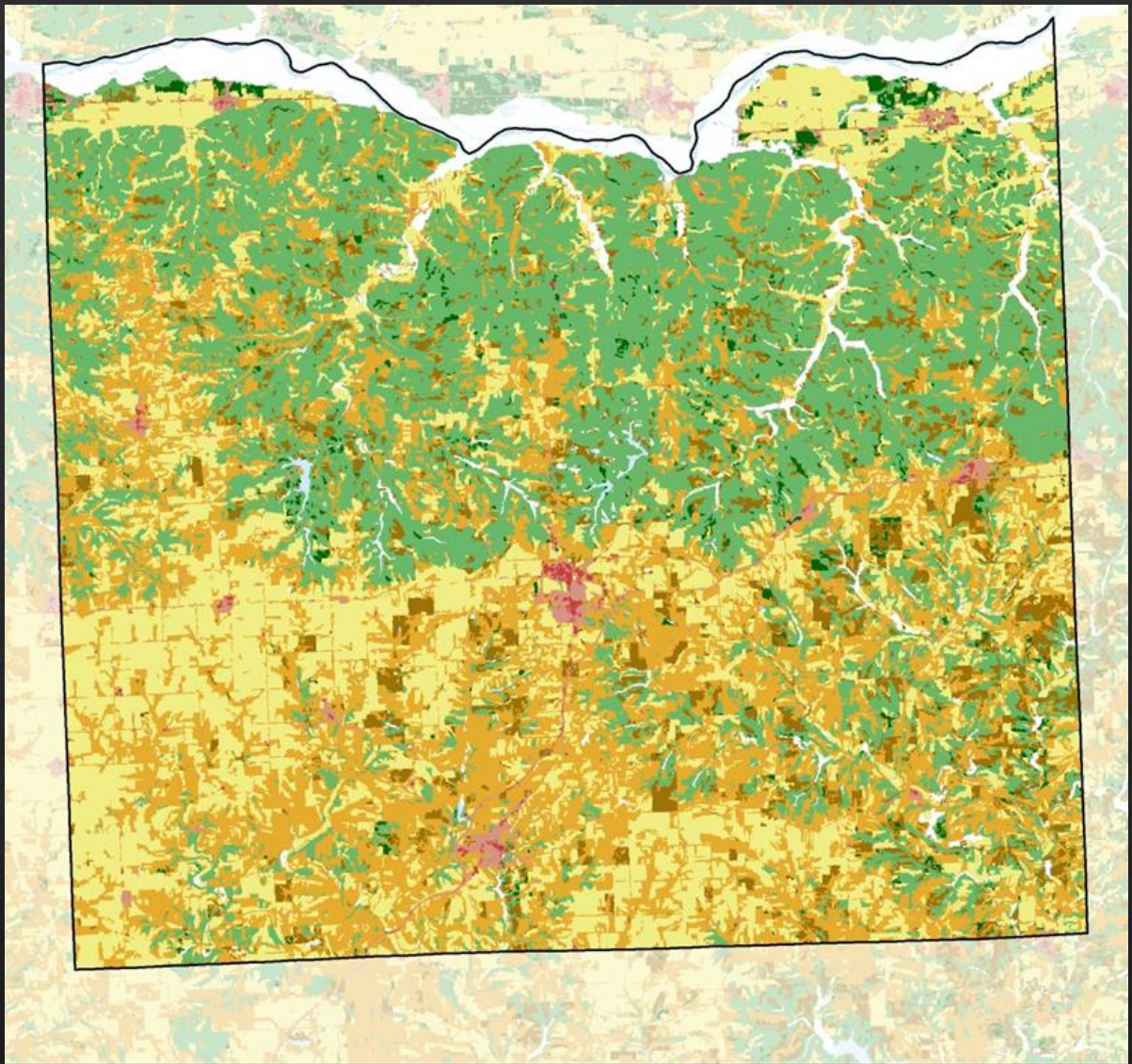
- ◇ Driftless Area: series of deep valleys, steep slopes, and ridgetops
- ◇ Loess soils, often shallow; some clay soils from bedrock layers
- ◇ No natural lakes
- ◇ 1,823 miles streams
- ◇ 237 miles trout streams
- ◇ 17 impaired watersheds (187 miles)

# Land cover and land use

- ◇ Historical: primarily oak savanna and prairie, some oak woods
- ◇ ~490,000 acres
- ◇ 23,867 people
- ◇ 86,247 cattle







**Legend**

- |   |   |
|---|---|
|  County Boundary               |  Developed, Low Intensity |
|  Broad-leaved Deciduous Forest |  Forage Grassland         |
|  Coniferous Forest             |  Idle Grassland           |
|  Crop Rotation                 |  Open Water               |
|  Developed, High Intensity     |   |



Created by Iowa County LCD  
May 2020



# Agriculture

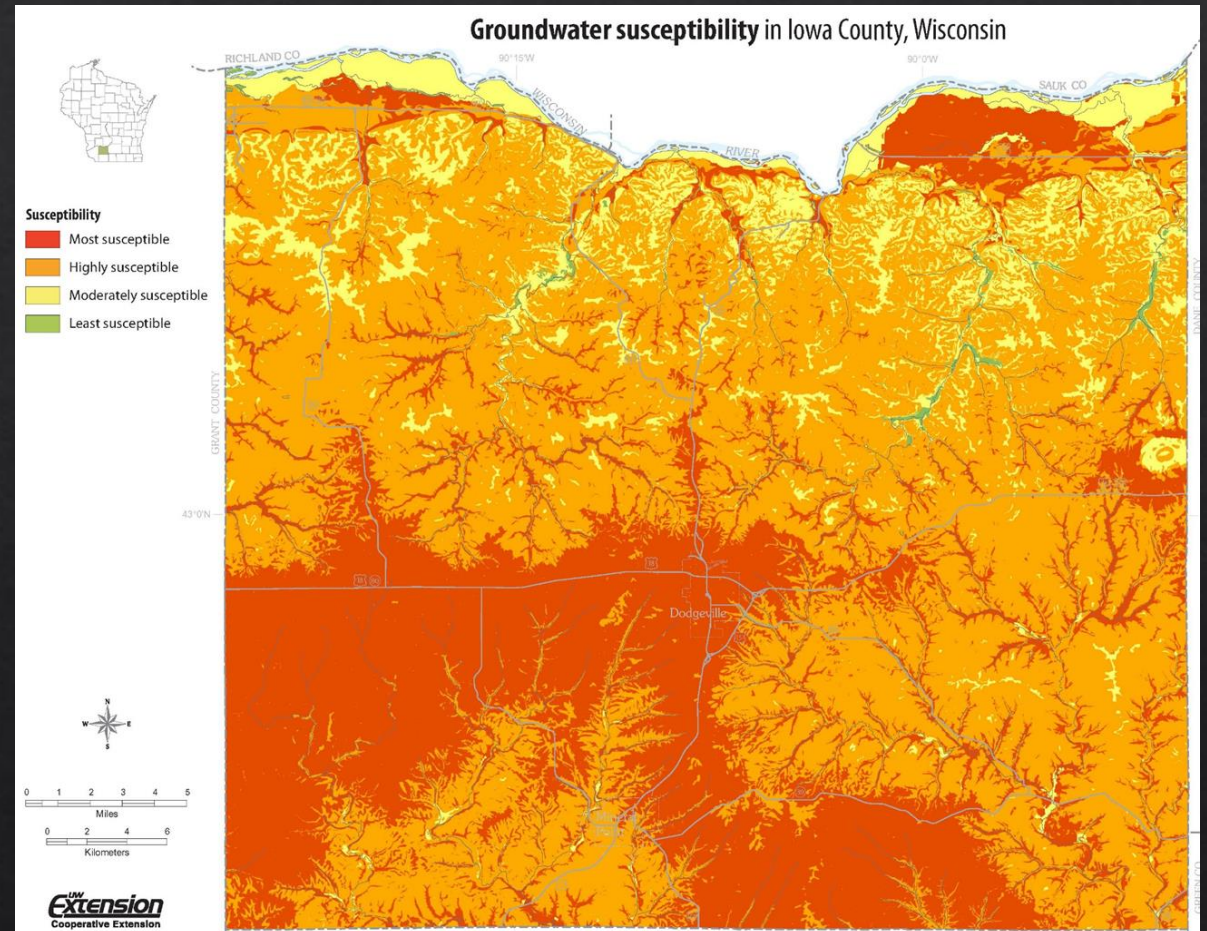
- ◆ Primarily: Corn, soybeans, hay and pasture
  - ◆ Also potatoes, beans, fruit, mixed vegetables
- ◆ Beef and dairy (160 dairy farms)
  - ◆ Also sheep, goats, poultry, hogs
- ◆ 40 organic farms, also direct market and CSAs
- ◆ No official CAFOs, though two are in the permitting process





# Groundwater

- ◇ Karst bedrock and shallow soils leads to high susceptibility for contamination
- ◇ SWIGG study





# Goals and Strategies

- ◇ 1: Increase farmland and infrastructure resilience to heavy rains and drought
  - ◇ Promote soil health and infiltration
  - ◇ Maintain 11 County-owned dams
- ◇ 2: Facilitate farmer investment in conservation practices
  - ◇ Educate landowners who rent out farmland
  - ◇ Promote the financial benefits of conservation practices
  - ◇ Provide training for farmer-written NMPs
- ◇ 3: Improve Groundwater Quality
- ◇ 4: Facilitate a culture of conservation in the farm community
  - ◇ Build relationships with farm-related businesses
  - ◇ Peer-based learning
  - ◇ Youth education



# Goals and Strategies

- ◆ 5: Increase NR151 Compliance
  - ◆ FPP: entire County is zoned; 740 participants, 185 site visits each year
  - ◆ Implement new ordinance in targeted areas
- ◆ 6: Improve surface water quality
  - ◆ Focus on impaired watersheds
  - ◆ Nine key element plan, TRM grant, MDV funding
  - ◆ Promote CREP buffers
- ◆ 7: Improve office organization and tracking





# Outreach

- ◆ Field days
- ◆ Newsletter
- ◆ Youth education
- ◆ Rainfall simulator



**LAND**  
DEPARTMENT

## DEEP ROOTS

A NEWSLETTER FOR  
FARMERS AND FARMLAND OWNERS  
IN IOWA COUNTY WISCONSIN

### SUMMER 2019

**TRANSITION TO NO-TILL**  
Joe Stableton is breaking away from conventional till, and trying new practices that are paying off.

**ANY QUESTIONS TO HELP NAVIGATE NUTRIENT MANAGEMENT PLAN**  
paid for your Nutrient Management Plan now let it pay back.

**HOLES AND GROUNDWATER**  
you need to know.

**FIXING BARNYARD RUNOFF**  
fill roof gutters to your barnyard.

**LAND WATER SECTION**  
look at Wisconsin's

IOWA  
County  
WISCONSIN  
GOVERNMENT





# Partnerships

- ◆ Iowa County Uplands Farmer-led Watershed Group
- ◆ Lowery Creek Watershed Initiative
- ◆ Southwest Wisconsin Grasslands Network

